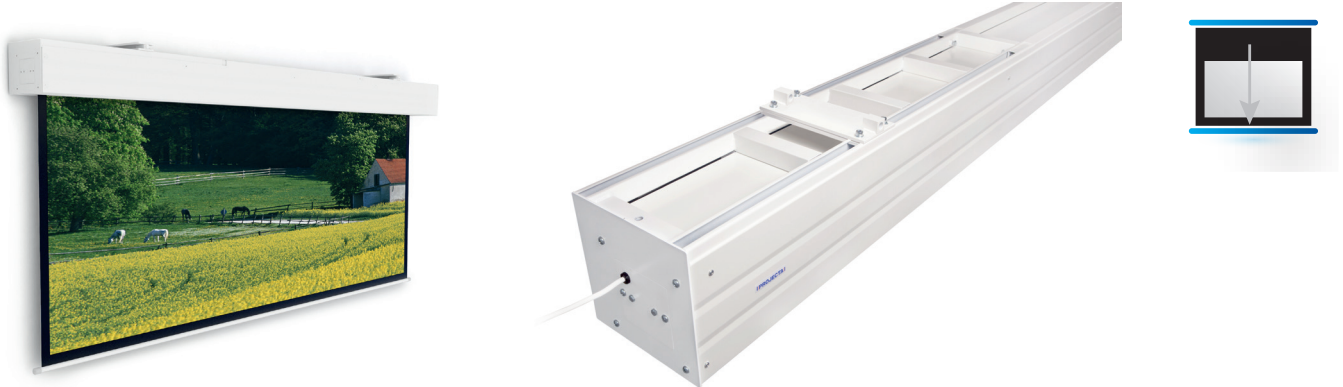


# ELPRO LARGE ELECTROL

Motorized projection screen for wall or ceiling installations

**PROJECTA**  
REFLECTING YOUR VISION



## Product specifications:

- Electrically operated projection screen 230 volt (50Hz) with a usage of no more than 0.69 Ampere (158.7 Watt).
- The motor is mounted on the left side and can be reached through a service hatch in the steel casing.
- The motor is mounted inside the roller, 65 cm long, 4 wire, 12 rotations per minute, maintenance free, integrated brake and thermal overload cut-out.
- The end positions are pre-set.
- The 4 wire connection is integrated into the end cap and can be connected to the electric installation with the connector and standard cable.
- Suitable for wall and ceiling mounting with the supplied flexible mounting brackets which can be positioned 100cm from either endcap.
- The steel square casing (23,9x27,6cm) is galvanised on the inside and on the outside powder coated with a matte structure coating (RAL 9010).
- The round slat bar closes off the bottom of the casing.
- The screen fabrics are flame retardant and seamless.
- The projection fabrics have a 5 cm. border all around or have no borders.
- The projection fabrics have a black backing. Standard 3 position wall switch is supplied.
- The projection screen is tested and monitored by the TÜV/GS programme (EN 60335-1: 2002+A1+A11+A12+A2+A13, EN6035-2-97:2006, DIN 19045-5/01.84 and ZEK 01.2-08/12.08) and CE marked and satisfies the strictest quality and safety requirements.

## Options:

- Without borders

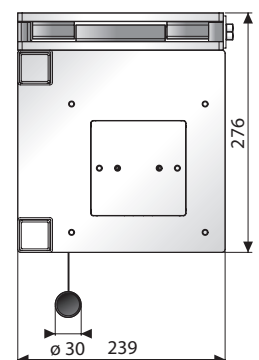


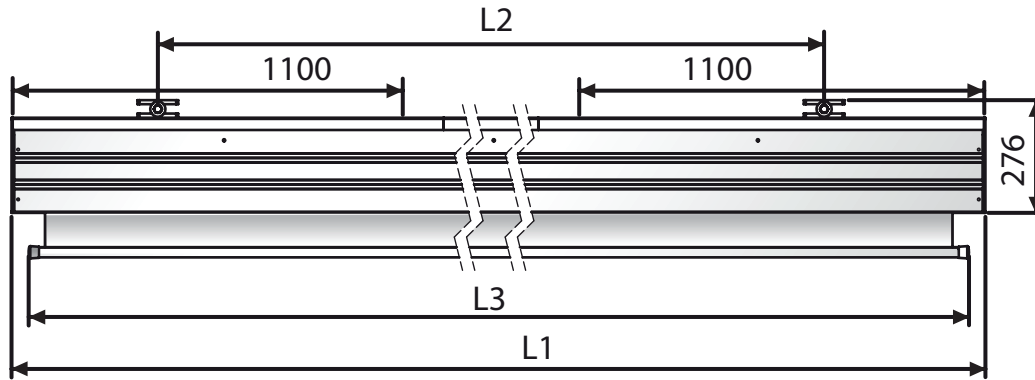
## Aspect Ratios:



## Available dimensions

Minimum width: 400 cm  
Maximum width: 500 cm





|              |           | Viewing Area | Dimensions |       |       | Border | Net weight |
|--------------|-----------|--------------|------------|-------|-------|--------|------------|
|              |           | cm           | L1 mm      | L2 mm | L3 mm | cm     | kg         |
| <b>16:10</b> | 255 x 400 | 245 x 390    | 4175       | 3056  | 4067  | 5      | 106        |
|              | 285 x 450 | 275 x 440    | 4675       | 3556  | 4567  | 5      | 115        |
|              | 316 x 500 | 306 x 490    | 5175       | 4056  | 5067  | 5      | 125        |
| <b>16:9</b>  | 229 x 400 | 219 x 390    | 4175       | 3056  | 4067  | 5      | 105        |
|              | 258 x 450 | 248 x 440    | 4675       | 3556  | 4567  | 5      | 114        |
|              | 286 x 500 | 276 x 490    | 5175       | 4056  | 5067  | 5      | 124        |
| <b>4:3</b>   | 300 x 400 | 290 x 390    | 4175       | 3056  | 4067  | 5      | 108        |
|              | 340 x 450 | 330 x 440    | 4675       | 3556  | 4567  | 5      | 117        |
|              | 378 x 500 | 368 x 490    | 5175       | 4056  | 5067  | 5      | 131        |
| <b>1:1</b>   | 400 x 400 | 390 x 390    | 4175       | 3056  | 4067  | 5 L/R  | 114        |
|              | 450 x 450 | 440 x 440    | 4675       | 3556  | 4567  | 5 L/R  | 125        |
|              | 500 x 500 | 490 x 490    | 5175       | 4056  | 5067  | 5 L/R  | 137        |

## Available standard resolution projection surfaces

All screen surfaces are seamless in the viewing area.

### Matte White

Gain: 1.0  
 Viewing Angle: 120°  
 Base material: Fiberglass  
 Fire retardancy: B2  
 Black backing: Yes  
 Opacity rating: > 99 %  
 Seamless: Yes  
 GreenGuard certification: No

### B1 / M1 Fire retardancy

Projection surface with B1 / M1 fire retardancy is optionally available. Contact Projecta for feasibility.

## Certifications

- Products are manufactured in an ISO14001 certified facility
- Projecta is an ISO 9001 certified company
- REACH - Registration, Evaluation, Authorisation and Restriction of Chemical substances.
- RoHS - Restriction of Hazardous Substances.
- WEEE - Waste Electronic and Electrical Equipment Regulations.



## Customisation

Give exact the sizes of the projection screen you need:

Viewing size: \_\_\_\_\_ Height (cm.) x \_\_\_\_\_ width (cm.)

Surface: \_\_\_\_\_ Border top: \_\_\_\_\_ (cm.) Border bottom: \_\_\_\_\_ (cm.)

RAL color case and plastic parts: RAL \_\_\_\_\_

Motor positioned on right side

Screen fabric mounted reversely

Remarks: \_\_\_\_\_

## Accessories - control options

For projection screens with a standard motor / delivered as standard with a wall switch

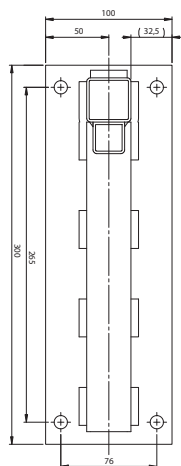
- Easy Install RF remote control (868,3 Mhz)
  - Easy Install wireless projectorcoupling (868,3 Mhz)
  - Easy Install wireless RF wall switch (868,3 Mhz)
- Easy Install RF remote control with projectorcoupling (868,3 Mhz)
- Easy Install projectorcoupling with cable
- Easy Install IR remote control
- Easy Install plug & play relaybox with potential free contacts
  - Easy Install plug & play RS232/RS422 control kit
  - Easy Install plug & play RS232/RS422 with IP control kit
- Keyswitch

## Accessories - installation

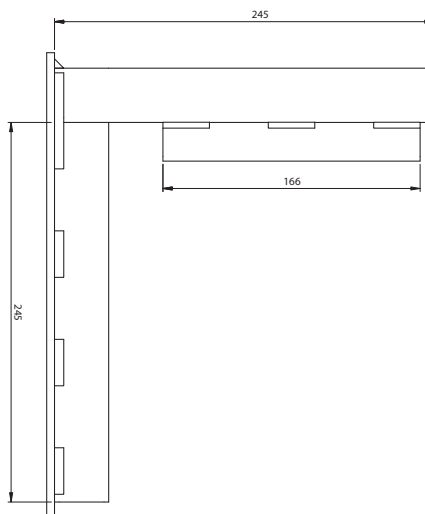
- Ceiling brackets
- Set extension brackets
- Set wall clamps

## Elpro Large - wall mounting bracket included

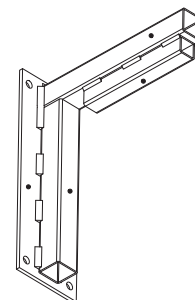
(Dimensions in mm)



front view

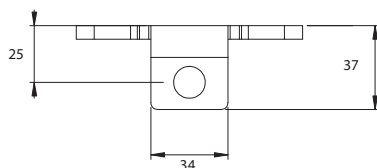


side view

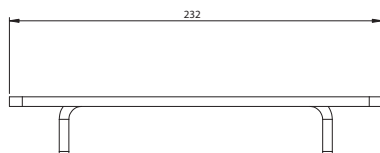


## Elpro Large - ceiling mounting bracket included

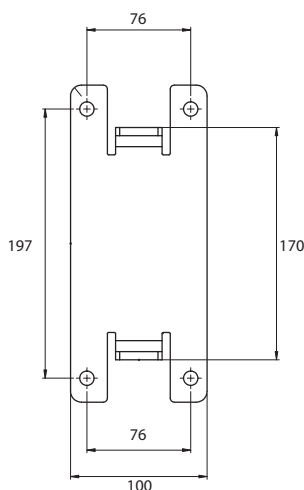
(Dimensions in mm)



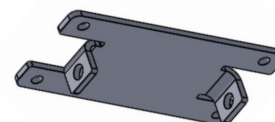
front view



Side view



Bottom view



## Warranty

Projecta provides a limited 5 year warranty on the Elpro Concept range and a limited 2 year warranty on all other products. The warranty on the motor of electrical screens is 5 year. All warranties are in effect beginning the date the product was invoiced by Projecta.