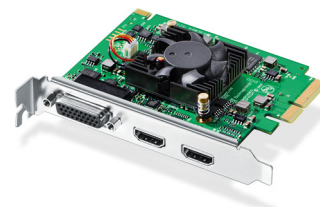


Intensity Pro 4K



Intensity Pro 4K lets you capture and playback on PCI Express Mac, Windows and Linux computers. Featuring HDMI and analog breakout connections, Intensity Pro 4K works with NTSC/PAL, HD and Ultra HD video with or without compression and is compatible with all popular video editing, audio, and streaming software. DaVinci Resolve and Media Express software are included free so you get professional editing, grading and media management without having to buy extra software!

Connections

HDMI Video Inputs

1 x HDMI type A connector.

HDMI Video Outputs

1 x HDMI type A connector.

HDMI Audio Inputs

8 Channels embedded in SD, HD and Ultra HD.

HDMI Audio Outputs

8 Channels embedded in SD, HD and Ultra HD.

Analog Video Inputs

Component, Composite or S-Video.

Analog Video Outputs

Component, Composite or S-Video.

Analog Audio Inputs

2 Channel RCA HiFi audio in 24-bit.

Analog Audio Outputs

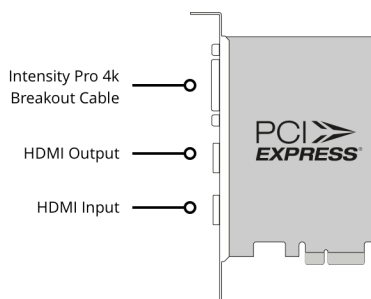
2 Channel RCA HiFi audio in 24-bit.

Multiple Rate Support

HDMI video connections are switchable between SD, HD and Ultra HD. Component analog video connections are switchable between SD and HD.

Computer Interface

PCI Express 4 lane, compatible with 4, 8 and 16 lane PCI Express slots.



Supported Codecs

AVC-Intra, AVCHD, Canon XF MPEG2, Digital SLR, DV-NTSC, DV-PAL, DVCPRO50, DVCPROHD, DPX, HDV, XDCAM EX, XDCAM HD, XDCAM HD422, DNxHR & DNxHD, Apple ProRes 4444, Apple ProRes 422 HQ, Apple ProRes 422, Apple ProRes LT, Apple ProRes 422 Proxy, Uncompressed 8-bit 4:2:2, Uncompressed 10-bit 4:2:2, Uncompressed 10-bit 4:4:4.

Software

Software Included

DaVinci Resolve, Media Express, Disk Speed Test, LiveKey, Blackmagic Desktop Video Utility and Blackmagic driver on Mac OS and Windows. Media Express, Blackmagic Desktop Video Utility and Blackmagic driver on Linux.

Internal Software Upgrade

Firmware built into software driver. Loaded at system start or via updater software.

Physical Installation

PCI Express 4 lane, compatible with 4, 8 and 16 lane PCI Express slots on Mac OS, Windows and Linux. Mac OS systems require a Mac Pro computer with PCI Express slots. Please check the Support pages to see the full system requirements.

Software Applications



DaVinci Resolve



Fusion



Final Cut Pro X



Adobe Premiere Pro CC



Avid Media Composer



Adobe After Effects CC



Avid Pro Tools



Steinberg Cubase



Autodesk Smoke



Adobe Photoshop CC

Other supported applications include:

The Foundry Nuke, Grass Valley Edius, Sony Catalyst Production Suite, Tools On Air Just: Play & Live & In, Softron MovieRecorder & MReplay, Adobe Flash Media Live Encoder, Telestream Wirecast, Livestream Producer, Resolume Arena, Magix Vegas Pro & Movie Edit Pro Premium, Corel VideoStudio Pro, CyberLink PowerDirector, Vidblaster X & Studio & Broadcast, Uniplay One & CG, CasparCG Server, Magicsoft CG, Xsplit Broadcaster, Imagine Communications Velocity & InfoCaster, DevTek Easy Media Suite, Metus Ingest, Boinx Software MimoLive, Cinegy Capture Pro, vMix Live, Renewed Vision ProPresenter, Ventuz Director, Class X Liveboard & Coral CG, Glookast Capturer, Open Broadcaster Software Studio, Nautilus NEMO3D, Burst Video Webclip2Go & [REC]Marker.

Video Standards

SD Video Standards

525i59.94 NTSC, 625i50 PAL

HD Video Standards

720p50, 720p59.94, 720p60
1080p23.98, 1080p24, 1080p25,
1080p29.97, 1080p30, 1080p50,
1080p59.94, 1080p60 1080i50,
1080i59.94, 1080i60

Ultra HD Video Standards

2160p23.98, 2160p24, 2160p25,
2160p29.97, 2160p30

Audio Sampling

Television standard sample rate of
48kHz and 24-bit.

Color Space

REC 601, REC 709.

HDMI Video Sampling

4:4:4, 4:2:2 & 4:2:0.

HDMI Color Precision

8, 10-bit (Deep Color) RGB 4:4:4 in all
modes up to 1080p60, 8, 10-bit YUV
4:2:2 in all modes.

HDMI Configuration

HDMI 1.4b supports Deep Color and
automatically configures to
connected display.

Copy Protection

HDMI input is unable to capture from
copy protected HDMI sources. Always
confirm copyright ownership before
capture or distribution of content.

Processing

Ultra HD/HD Down Conversion

Software based down conversion during video playback.

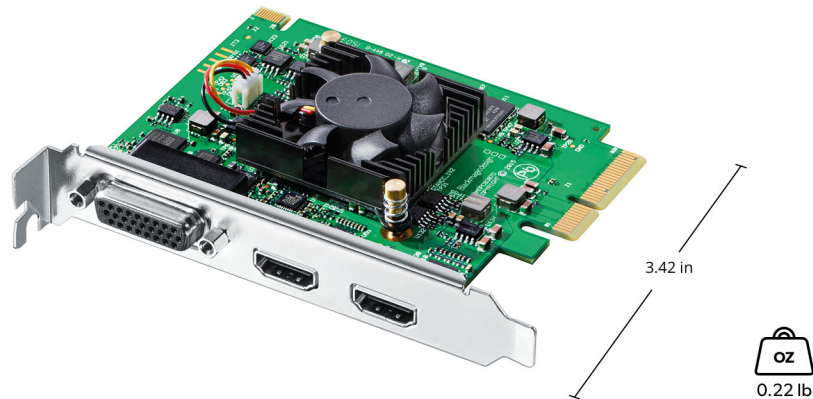
HD Up Conversion

Real time SD to 1080HD and 720HD during video capture.

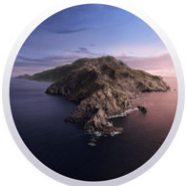
Real Time Effects

DaVinci Resolve, Final Cut Pro X internal effects. Adobe Premiere Pro CC Mercury Playback Engine effects. Avid Media Composer internal effects.

Physical Specifications



Operating Systems



Mac 10.14 Mojave,
Mac 10.15 Catalina or later.



Windows 8.1 and 10, both 64-bit.



Linux

Power Requirements

Power Consumption

17 Watts

EMC Certifications

FCC, CE and C-Tick.

Environmental Specifications

Operating Temperature	Storage Temperature	Relative Humidity
5° to 40° C (32° to 104° F)	-20° to 45° C (-4° to 113° F)	0% to 90% non-condensing

What's Included

Intensity Pro 4K
SD card with software and manual
Breakout Cable

Warranty

12 Months Limited Warranty.

All items on this website are copyright Blackmagic Design Pty. Ltd. 2020, all rights reserved. All trademarks are property of their respective owners. MSRP includes duties, but excludes sales tax and shipping costs. This website uses remarketing services to advertise on third party websites to previous visitors to our site. You can opt out at any time by changing cookie settings. [Privacy Policy](#)

Blackmagic Design Authorized Reseller