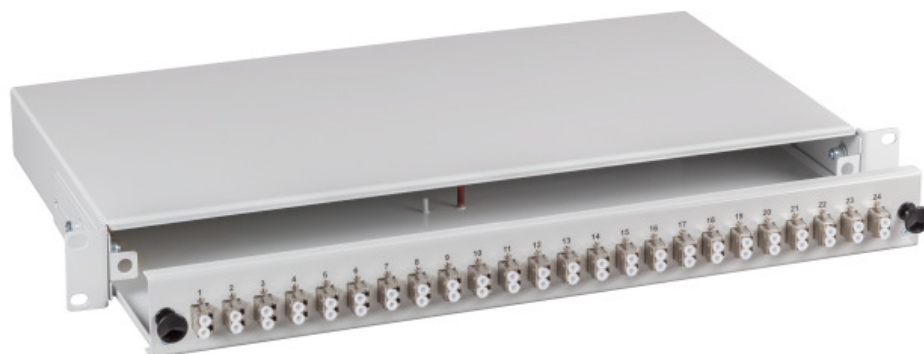


# DATASHEET

Splicebox sliding unit, with shifted LC-Duplex metal adapter and stripped pigtails, OM2



## Description

completely assembled splice box with adapters and coloured pigtails  
 metal housing depth adjustable  
 cable entries at the rear, incl. 1 x PG16  
 6 x self adhesive fiber tray

**Special assembly possible at short notice!**

## General data

Mounting method	482.6 mm (19 inch)-installation
With housing	True
With front plate	True
With pigtails	True
Number of height units	1
Type of connector external	LC-Duplex
Type of connector interior	LC-Duplex
Pigtails prepared	stripped
Sliding	sliding version
Fibre type	Multimode 50/125
Fibre class	OM2
Adapter material	Metall adapter

## Dimensions

Height	44.5 mm
Width	483.0 mm
Depth	244.0 mm

## Available variants

Article no.	Title	Pigtail	With number of couplings/adapters	Adapter colour	Suitable for number of couplings/adapters	Colour RAL-number
-------------	-------	---------	-----------------------------------	----------------	---	-------------------

This datasheet was created automatically on 18-11-2020 . Technical changes reserved.



# DATASHEET

Splicebox sliding unit, with shifted LC-Duplex metal adapter and stripped pigtails, OM2

BA71902V.48	Splice box LC 50/125µ a.,48Pigt. stripped / 24 Adapter	48 x LC	24	metal	24	grey	7035
-------------	--	---------	----	-------	----	------	------

## accessory

53012.1	Cable Glands, Standard
80362.2-10	FO Marking Strips "Warnung vor Laserstrahlung"
39926.1	Miller® Fiber Cleaning Tapes
53010.5	Cable gland PG-16

This datasheet was created automatically on 18-11-2020 . Technical changes reserved.

