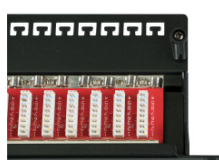
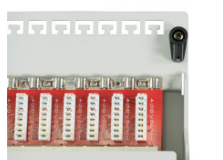
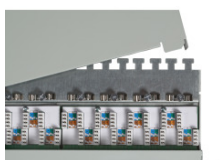


DATASHEET

Patchpanel STP 24xRJ45 Cat.6A, 19" 1U



Cat.6A 10 Gbit
500 MHz
CE



Description

The high quality of the shielded Cat.6A RJ45 patch panel ensures excellent performance for 10 Gigabit Ethernet applications.

19" mounting, 1U

24 Ports

LSA connection strip for installation cable AWG24..AWG22

Color code according to TIA / EIA 568 A / B

Lid with quick release

With earthing terminal

Scope of delivery:

24 cable ties, Instruction manual, 4 screw M6x18mm with nuts

General data

Mounting method	482.6 mm (19 inch)-installation
Category	6A (TIA)
Transmission	10 Gbit
Bandwidth	500 MHz
Number of height units	1
Connection type	LSA
Type of connector	RJ45 8(8)
Screened	True

This datasheet was created automatically on 18-11-2020 . Technical changes reserved.



DATASHEET

Patchpanel STP 24xRJ45 Cat.6A, 19" 1U

General data

Cross section	AWG 24 - AWG 22
Colour code	acc. TIA/EIA 568A/B
Complaint to UL94	V-0

Mechanical characteristics

Housing material Panel	Steel, 1.5mm
Housing material of RJ45 jacks	PBT
Housing material LSA-terminal	PC
Material LSA contacts	Phosphor bronze, tinned
Contact coating	3 µ" gold plated
Durability LSA contacts	200
Mating cycles RJ45 jack	750

Dimensions

Height	44.5 mm
Width	482.6 mm
Depth	108.2 mm

Environmental conditions

Temperature range (Storage)	-40 – 85 °C
Temperature range (Operation)	0 – 70 °C

Electrical characteristics

Electrical strength	125 V AC RMS
Dielectric Withstanding Voltage	750 V AC 60Hz
Current Rating	1.5 A
Insulation Resistance	1000 MΩ
Contact Resistance	100 mΩ
POE Standard	POE;POE+

Available variants

Article no.	Title	Number of buses/couplings	Colour	RAL-number
37666.1M	Patchpanel STP 24xRJ45 Cat.6A, 19" 1U, RAL7035 grey	24	grey	7035
37666SW.1M	Patchpanel STP 24xRJ45 Cat.6A, 19" 1U, RAL9005 black	24	black	9005

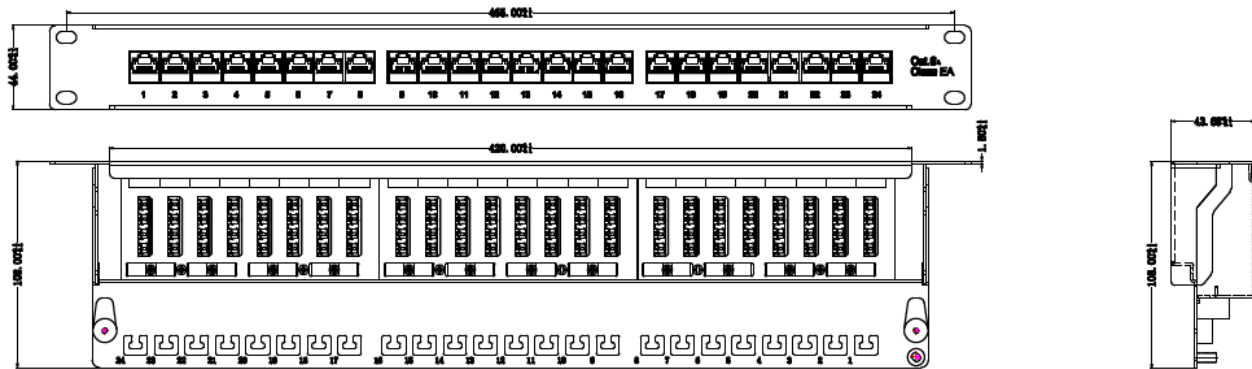
This datasheet was created automatically on 18-11-2020 . Technical changes reserved.



DATASHEET

Patchpanel STP 24xRJ45 Cat.6A, 19" 1U

Technical drawings



accessory

81022.100

Cable Ties

This datasheet was created automatically on 18-11-2020 . Technical changes reserved.

