

Re-Imagine Beyond Technology™

plura® SFP-H "HYBRID" Series

Screen Sizes 17" 21" 24" 32" 47" 55" 65" 84"



The New FUTURE PROOF SFP-H, Hybrid Monitor Series, supporting Coax, Fiber & IP connectivity.

PLURA SFP-H Hybrid Series - Product Highlights:

The SFP-H is integrated with powerful H/W & S/W platforms to support Coaxial 3Gb/s BNC I/O connectivity, Coaxial SFP I/O connectivity, IP SFP+ over Fiber decoding "ST-2110 & ST-2022" with Third-Party H/W decoder and the NEW PIPM "Plura IP Platform Module" decoder. The PIPM module can decode and analyze a wide variety of media formats across SFP+ 10G high capacity IP interface. There are three different platforms with three different monitoring levels. All modules can be integrated in any size SFP-H monitor. The SFP-H monitor series will be available in multiple sizes starting from 17" all the way to 84".

4x4 Cross Point solution

SFP-H series comes standard with Built-IN 4x4 Cross Point solution. This allows Plura SFP-H monitor to be utilized at the front, middle or backend of your video system. The monitor has TWO SFP+ cages which can accept variety of third-party SFP modules.

LKFS* Audio Loudness Real-Time Monitoring & Logging including other powerful Audio Features

- Digital Loudness Audio Monitoring & Logging with selected channel measurement in LKFS / LUFS scale
- Stereo Analog & 16 CH Embedded Digital Audio Input Support.
- Advanced and various 16 CH Audio Metering Scales.
- Built -IN Stereo 2 W Speakers.
- De-embedding Audio, Stereo Analog Audio & 16 CH Embedded Digital Audio Input Support.

Closed Captioning (708/608)

SFP-H monitor can decode closed caption streams with 708 Service 1, Service 2, 608 Transcoded CC1,2,3&4, 608 line 21, & 608 ANC. SFP monitor can support Teletext 801 & Subtitle OP-47 for Australia & New Zealand region.

* LKFS Monitoring Option - Factory FIT ONLY

Various SFP Modules

SFP-H series adapts to various SFP Plura modules, such as:

- IP Transceiver modules supporting ST- 2110 & ST-2022
- Fiber Dual TX, RX, Transceiver modules
- Coaxial Dual TX,RX, Transceiver modules
- Hybrid Coaxial & Fiber TX & RX modules
- 3G/HD/SD to HDMI module

"3" Programmable Presets & other Prominent Features

- 3 preset programmable functions
- Line Mode, Skin tone, Range error, Focus Assist.
- Color Temperature – User, VAR, Adjustable (11000K TO 3200K)
- Internal Monitor Display (IMD)
- Pixel to Pixel Mode, Tally, DC Operation
- Display LTC & DVITC time code with line select
- Internal Pattern Generator Digital Audio Decoding
- Picture and Picture (PaP), Picture in Picture (PiP) Display / Blend
- RJ-45 Ethernet, 100Mbps, LAN to Serial supported for wall control applications along with programmable GPI & RS232 Remote Control

Please note that the technical details shown here are provisional specific ations (as of Aug 2019). The information is subject to change without notice.

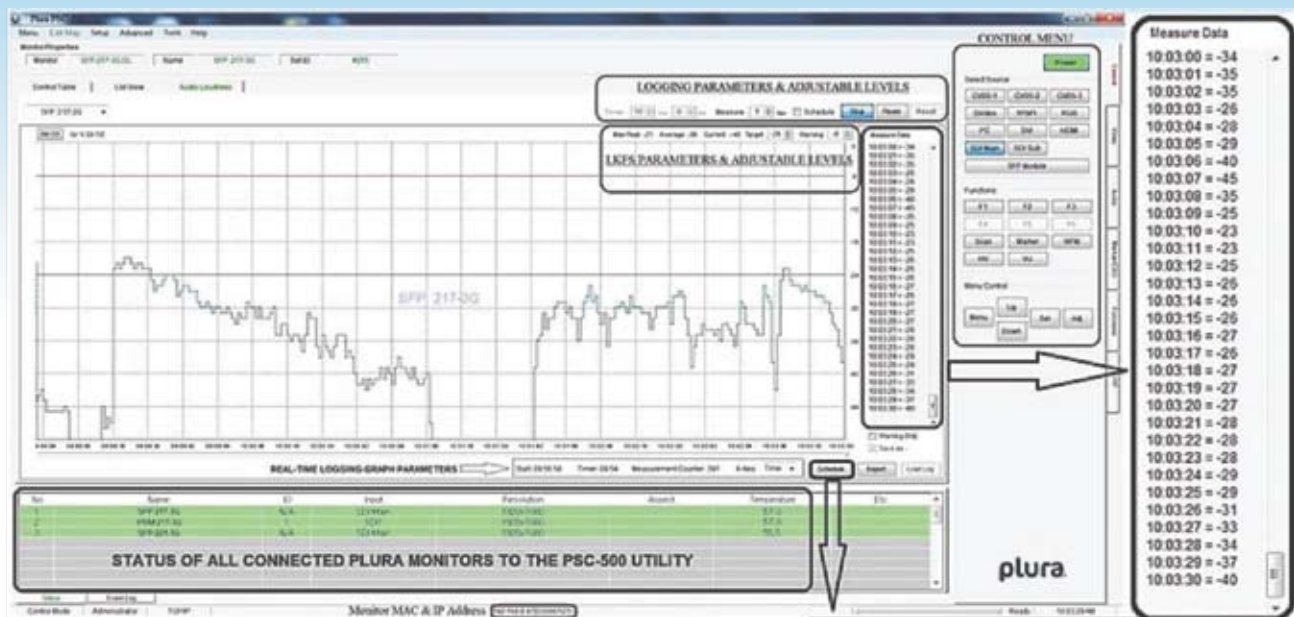
www.Pluralnc.com

SFP-H Dashboard Capabilities

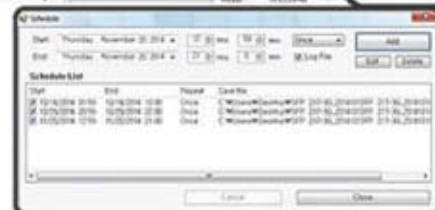
The NEW SFP-H Series QC Dashboard series with the below NEW & Advanced features takes Master Control monitoring to a higher and unmatched Level. Plura SFP-H line up for “QC Dashboard” Series of monitors that include WF/VS, Audio meters, (Closed Caption Decoding) and an on screen LKFS measurement with logging! SFP-H monitor series have a built-IN 4x4 router and SFP modular capabilities. This would allow a direct multiple IP, Fiber and/or Coax feeds to the monitor, then you can break out to IP, Fiber, Coax or HDMI.

LKFS Loudness Real-Time Monitoring & Logging

- ▶ LKFS Loudness Real-Time display & logging on a remote PC using PSC-500 (Plura System Controller Utility). See below:



Real-Time logging on a Plura SFP-317H Monitor



Schedule Menu
Edit & Add Unlimited schedule list items.

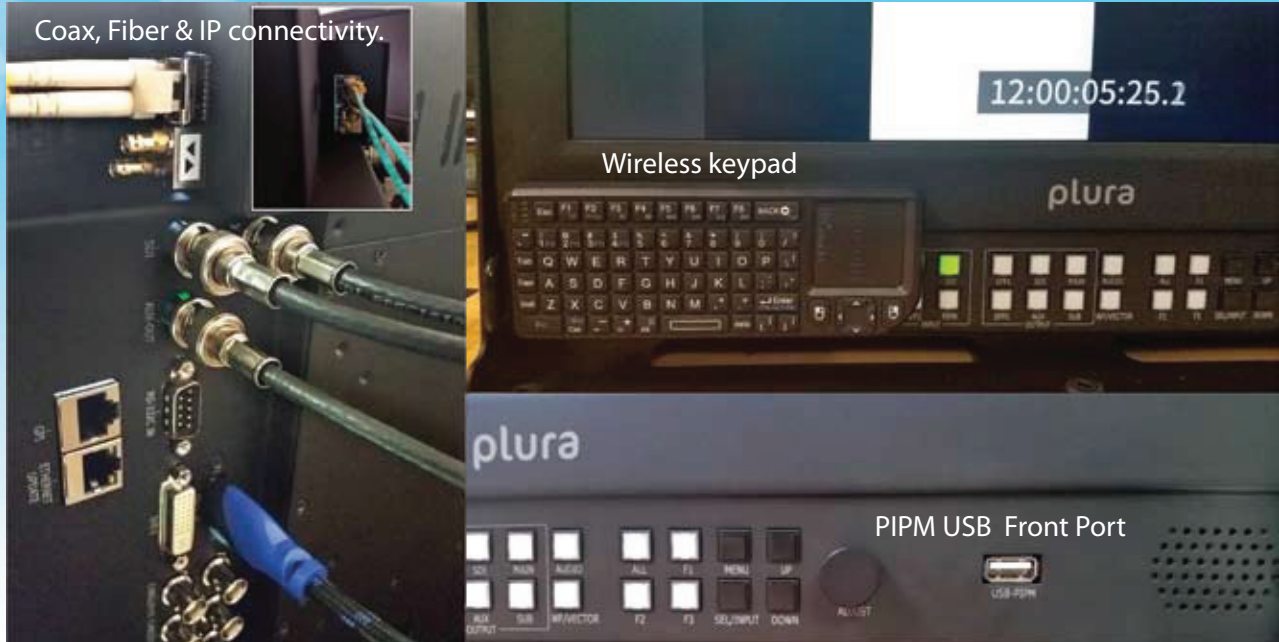
LKFS Loudness Real-Time display on the Plura monitor above.

Plura SFP-H / Small Form Factor Pluggable Modules

The powerful I/O configuration design of any SFP-H monitor is based on the popular SFP (small form factor pluggable) modules,. Every SFP-H monitor comes with Two slots.

SFP MODULE IN /OUT			
SFP 1		SFP 2	
IN 1	OUT 1	IN 2	OUT 2

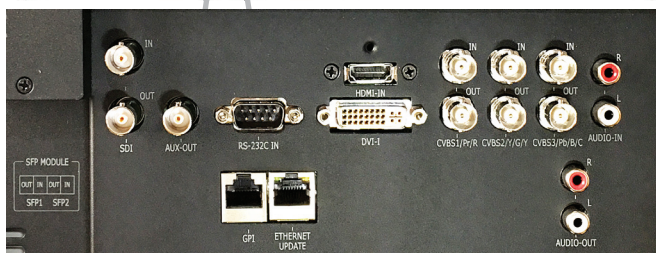
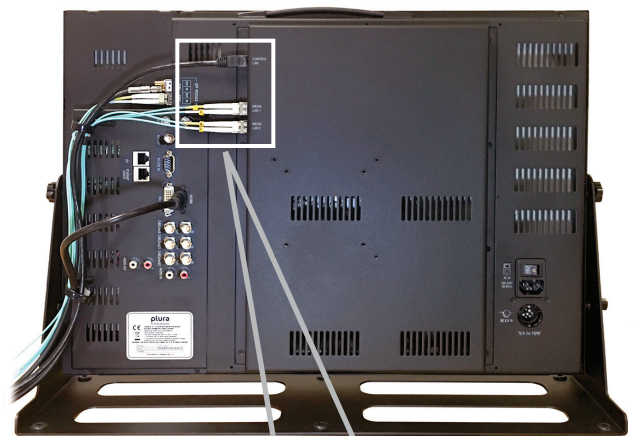
TWO SFP cages can accept variety of Plura SFP modules.



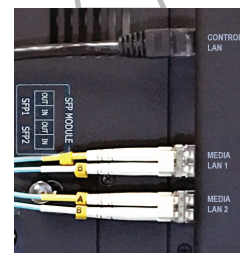
Back view of SFP -317-H



Back view of SFP-317-H with PIPM-R-7



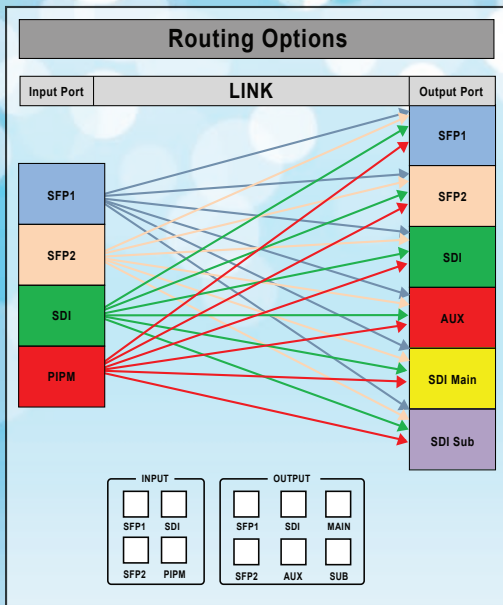
SFP-H I/O



PIPM-R-7 I/O

SFP-H Comes with Powerful Features

SFP Built-IN 4x4 Cross Point



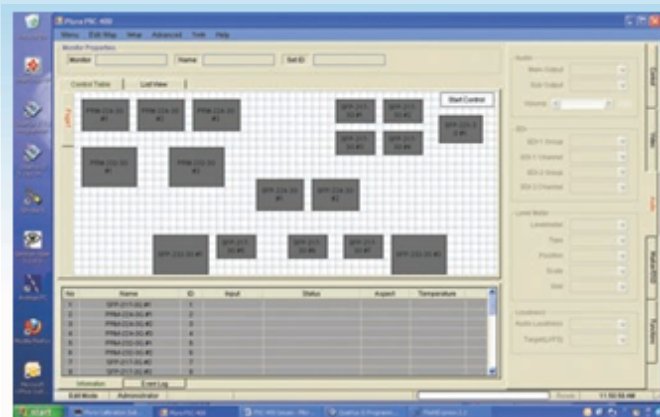
SFP-H Series comes standard with Built-IN 4 x 4 Cross point solution. This allows the Plura SFP-H monitor to be utilized at the front, middle or backend of your video system. The monitor has two SFP cages which can accept a variety of Plura SFP modules.

SFP-H is equipped with a powerful video processor to display concurrently two video inputs with the related Waveform & Vector, 16CH Audio Level Metering, and Timecode. Display Advanced Waveform & Vector Scope simultaneously with line select. Very slim chassis – Great for trucks, limited space and other general applications. 17”, 21”, 24”, 32”, 47”, 55”, 65” & 84” sizes. RJ-45 Ethernet, 100Mbps, LAN to Serial supported for wall control applications along with programmable GPI & RS232 Remote Control.

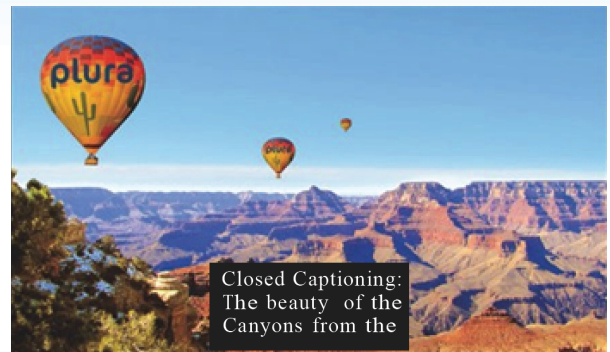


Dual Display Mode with Waveform & Vector

PSC-500 - Plura System Controller



Inclusive Network Controller with Firmware & Cal. File Transfer



Closed Caption Real-Time display on Plura Monitor

Powerful Audio Measurement Package

- LKFS Loudness Real - Time Monitoring and Logging
- Stereo Analog & 16CH Embedded Digital Audio Input Support.
- Advanced and various 16CH Audio Metering Scales
- Built-IN Stereo 2 W Speakers
- De-embedding Audio, Stereo Analog Audio & 16CH Embedded Digital Audio Input support

LKFS Audio Loudness Mode.

LKFS Audio Loudness Measurement - Digital Loudness Audio Metering with selected channel measurement in LKFS scale.



LKFS Audio Loudness Mode.

SFP-H-Series Specifications: 17" 21" 24" 32"

FUNCTION		SFP-317-H	SFP-321-H	SFP-324-H	SFP-332-H
INPUT	SDI	1EA Serial Digital , 3Gb/s, 1.485Gb/s, 270Mb/s, BNC Jack			
	SFP+SDI-10G	2EA SFP+ Ports Serial Digital(1) , 3Gb/s, 1.485Gb/s, 270Mb/s			
	SFP+Ethernet-10G* - W /PIPM	Dual 10G(2) + Management			
	HDMI	1EA, HDMI, 19pin Female			
	DVI-VGA	1EA, DVI-I, 24pin, Female			
	Composite / Component	3EA, Composite, 1EA, Component(YPbPr/RGB), BNC Jack			
	S-Video	1EA, YC (S-Video), S-Jack			
OUTPUT	SDI	1EA Serial Digital , 3Gb/s, 1.485Gb/s, 270Mb/s, BNC Jack			
	SFP+SDI-10G	2EA SFP+ Ports Serial Digital(1) , 3Gb/s, 1.485Gb/s, 270Mb/s			
	AUX - SDI	1EA Serial Digital , 3Gb/s, 1.485Gb/s, 270Mb/s, BNC Jack			
	Composite / Component	3EA, Composite, 1EA, Component(YPbPr/RGB), BNC Jack			
	S-Video	1EA, YC (S-Video), S-Jack			
	DIGITAL MEDIA FORMAT	SMPTE-ST-2110	SFP+ SDI - 10G(1) & SFP+ Ethernet -10G(2)		
SMPTE-ST-2022-6		SFP+ SDI - 10G(1) & SFP+ Ethernet -10G(2)			
SMPTE-ST-2022-7		Dual SFP+ Ethernet 10G(2)			
SMPTE-428.1M		2048x1080P (24/25)			
SMPTE-425(3G)		1080p(60/59.94/50/30/29.97/25/24/23.98/30sF/29.97sF25sF/24sF/23.98sF) 1080i (60/59.94/50)			
SMPTE-260M		1920x1035i(60/59.94)			
SMPTE-292M		1920x1080i (50/59.94/60) 1920x1080P (30Pst/25Pst/24Pst/30/25/24)			
		Dual Link HD-SDI YPbPr(4:2:2): 1080P(50/59.94/60)			
		Dual Link HD-SDI YpbPr/RGB(4:4:4)			
SMPTE-372M		1080P(30/29.97/25/24/23.98)			
		1080i(29.97/25/24/23.98)			
		720P(60/59.94/50)			
SMPTE-296M		1280x720P (50/59.94/60)			
SMPTE-259M/C		480i(59.94) 576i(50)			
Component		640 X 480 up to 1920 X 1080p			
HDMI / DVI Digital		H Frequency Range : 22~82KHz, V Frequency Range : 55~90Hz, Maximum Resolution : UXGA at 60Hz Maximum Pixel Rate: 162MHz			
ANALOG INPUT FORMAT		Composite	1.0Vpp(with sync)		
	S-Video	Y :1.0Vp-p, C:0.286Vp-p			
	Component	1.0Vpp (Y with Sync) 0.7Vpp (Pb/Pr)			
	RGB	1.0Vpp (G with Sync), 0.7Vpp (R/B)			
	DVI- (Analog PC)	H Frequency Range : 22~82KHz, V Frequency Range : 55~90Hz, Maximum Resolution : UXGA at 60Hz Maximum Pixel Rate : 162MHz - Separate Sync Support			
AUDIO INPUT	Line Input	Analog Stereo (RCA Jack)			
	SDI Audio Input	Embedded HD/SD-SDI Audio			
AUDIO OUTPUT	Speaker Output	1EA, L/R, Stereo pin jack			
	Line Output	2EA, 2W+2W			
	Ear-phone Output	1EA, L/R Stereo, 3.5mm pin jack			
	SDI Audio Output	Input Line & De-embedded Audio, 1~ 16CH			
I/O PORT	GPI	1EA, Remote, RJ-45 Jack, GPI-7 Port			
	RS232/422	1EA, RS-232/422, Serial interface			
	Ethernet Port	RJ-45 8 pin Ethernet port, 100Mbps, supported for F/W update & wall control applications RJ-45 8 pin Ethernet port, 100Mbps, supported for PIPM management applications*			
CONTROL	Wireless	Mini Wireless Keyboard & Touchpad*			
	HTTP	HTTP Web Interface*			
LCD	Size	17"	21"	24"	32"
	Aspect Ratio	16 : 9	16 : 9	16 : 10	16 : 9
	Resolution	1920 x 1080	1920 x 1080	1920 x 1200	1920 x 1080
	Color Depth	8 bit			
	Viewing Angle (deg-Typ)	H: 160 - V: 160	H: 178 - V: 178	H: 178 - V: 178	H: 178 - V: 178
	Luminance of White-Max	450 cd/m2	350 cd/m2	400 cd/m2	450 cd/m2
	Contrast (Typ)	900: 1	1000 : 1	1000 : 1	1500 : 1
	Display Area (H X V) (mm)	372.9 x 209.7	495.6 x 305.2	518.4 x 324.0	698.4 x 392.85
	Response Time	Tr=8ms / Tf=8ms	Tr=6ms / Tf=6ms	Tr=7.5ms / Tf=7.5ms	Tr=6ms / Tf=6ms
POWER REQUIREMENT	AC 100V - 240V (60/50 Hz)				
POWER CONSUMPTION	65	100	100	140	
WORKING TEMPERATURE	0°C ~ 40°C (32°~104°F)				
WORKING HUMIDITY	10%RH ~ 85%RH (Non Condensed)				
STORAGE TEMPERATURE	-10°C ~ 80°C (14°~176°F)				
STORAGE HUMIDITY	10%RH ~ 85%RH (Non Condensed)				
WEIGHT (w/o Stand, PIPM* & Packaging)	4.99 Kg - 11 Lbs	7.71 Kg - 17 Lbs	8.61 Kg - 19 Lbs	16.6 Kg - 30 lbs	
WEIGHT (w/ Packaging) (w/o PIPM*)	8.8 Kg - 19.5 Lbs	10.4 Kg - 23 LBS	13.6 Kg - 30 LBS	22.6 Kg - 50 lbs	
DIMENSION (WxHxD) (w/o Stand, PIPM and Packaging)	442 x 310 x 64 mm 17.4 x 12.2 x 2.5 inches	528 x 350 x 65 mm 20.78 x 13.77 x 2.56 inches	553.8 x 408 x 68 mm 21.8 x 16.06 x 2.68 inches	773 x 452 x 72.6 mm 28.85 x 17.8 x 2.8 inches	
PACKAGING DIMENSION (WxHxD)	584.2 x 482.6 x 254.0 mm 23 x 19 x 10 inches	635 x 482.6 x 254.0 mm 25 x 19 x 10 Inch	711.2 x 584.2 x 254.0 mm 28 x 23 x 10 Inch	932 x 630 x 272 mm 36.69 x 24.8 x 10.71	

Media Production Supported Format Options

- (1) 3rd Party SFP+ Decoder SMPTE 2110 / SMPTE 2022-6
 (2) PIPM* H/W & S/W Option SMPTE 2110 / SMPTE 2022-6 / SMPTE 2022-7
 PIPM-5 Module SMPTE 2110 / SMPTE 2022-6
 PIPM-R-7 Module SMPTE 2110 / SMPTE 2022-7

Please note that the technical details shown here are provisional specifications (as of Aug 2019). The Information is subject to change without notice.

* PIPM "Plura IP Platform Module"

SFP-H-Series Specifications: 47" 55" 65" 84"

FUNCTION		SFP-347-H	SFP-355-H	SFP-365-H	SFP-384-H
INPUT	SDI	1EA Serial Digital, 3Gb/s, 1.485Gb/s, 270Mb/s, BNC Jack			
	SFP+SDI-10G	2EA SFP+ Ports Serial Digital(1), 3Gb/s, 1.485Gb/s, 270Mb/s			
	SFP+Ethernet-10G* - W / PIPM	Dual 10G(2) + Management			
	HDMI	1EA, HDMI, 19pin Female			
	DVI-VGA	1EA, DVI-I, 24pin, Female			
	Composite / Component	3EA, Composite, 1EA, Component(YPbPr/RGB), BNC Jack			
OUTPUT	S-Video	1EA, YC (S-Video), S-Jack			
	SDI	1EA Serial Digital, 3Gb/s, 1.485Gb/s, 270Mb/s, BNC Jack			
	SFP+SDI-10G	2EA SFP+ Ports Serial Digital(1), 3Gb/s, 1.485Gb/s, 270Mb/s			
	AUX - SDI	1EA Serial Digital, 3Gb/s, 1.485Gb/s, 270Mb/s, BNC Jack			
	Composite / Component	3EA, Composite, 1EA, Component(YPbPr/RGB), BNC Jack			
	S-Video	1EA, YC (S-Video), S-Jack			
DIGITAL MEDIA FORMAT	SMPTE-ST-2110	SFP+ SDI - 10G(1) & SFP+ Ethernet -10G(2)			
	SMPTE-ST-2022-6	SFP+ SDI - 10G(1) & SFP+ Ethernet -10G(2)			
	SMPTE-ST-2022-7	Dual SFP+ Ethernet -10G(2)			
	SMPTE-428.1M	2048x1080P (24/25)			
	SMPTE-425(3G)	1080p(60/59.94/50/30/29.97/25/24/23.98/30sF/29.97sF25sF/24sF/23.98sF) 1080i (60/59.94/50)			
	SMPTE-260M	1920x1035i(60/59.94)			
	SMPTE-292M	1920x1080i (50/59.94/60) 1920x1080P (30Pst/25Pst/24Pst/30/25/24)			
		Dual Link HD-SDI YPbPr(4:2:2) : 1080P(50/59.94/60)			
		Dual Link HD-SDI YpbPr/RGB(4:4:4)			
	SMPTE-372M	1080P(30/29.97/25/24/23.98)			
		1080i(29.97/25/24/23.98)			
		720P(60/59.94/50)			
	SMPTE-296M	1280x720P (50/59.94/60)			
	SMPTE-259M/C	480i(59.94)			
	ANALOG INPUT FORMAT	Component	640 X 480 up to 1920 X 1080p		
S-Video		H Frequency Range: 22~82KHz, V Frequency Range: 55~90Hz, Maximum Resolution : UXGA at 60Hz			
Component		Maximum Pixel Rate: 162MHz			
RGB		1.0Vpp (G with Sync), 0.7Vpp (R/B)			
DVI- (Analog PC)		1.0Vpp(with sync) Y : 1.0Vp-p, C:0.286Vp-p 1.0Vpp (Y with Sync) 0.7Vpp (Pb/Pr) 1.0Vpp (G with Sync), 0.7Vpp (R/B) H Frequency Range: 22~82KHz, V Frequency Range : 55~90Hz, Maximum Resolution : UXGA at 60Hz Maximum Pixel Rate : 162MHz - Separate Sync Support			
		Analog Stereo (RCA Jack)			
AUDIO INPUT	Line Input	Embedded HD/SD-SDI Audio			
	SDI Audio Input	1EA, L/R, Stereo pin jack			
AUDIO OUTPUT	Speaker Output	2EA, 2W+2W			
	Line Output	1EA, L/R Stereo, 3.5mm pin jack			
	Ear-phone Output	Input Line & De-embedded Audio, 1~ 16CH			
I/O PORT	SDI Audio Output	1EA, Remote, RJ-45 Jack, GPI-7 Port			
	GPI	1EA, RS-232/422, Serial interface			
	RS232/422	RJ-45 8 pin Ethernet port, 100Mbps, supported for F/W update & wall control applications RJ-45 8 pin Ethernet port, 100Mbps, supported for PIPM management applications*			
CONTROL	Ethernet Port	Mini Wireless Keyboard & Touchpad*			
	Wireless	HTTP Web Interface*			
LCD	HTTP	47"	55"	65"	84"
	Size	16 : 9	16 : 9	16 : 10	16 : 9
	Aspect Ratio	1920 x 1080	1920 x 1080	1920 x 1080	1920 x 1080
	Resolution	10 bit			
	Color Depth	H: 178 - V: 178	H: 178 - V: 178	H: 178 - V: 178	H: 178 - V: 178
	Viewing Angle (deg-Typ)	450 cd/m2	600 cd/m2	400 cd/m2	500 cd/m2
	Luminance of White-Max	4000 : 1	4000 : 1	4000 : 1	5000 : 1
	Contrast (Typ)	1040.48 x 585.27	1209.6 x 680.4	1428.48 x 803.52	1859.58 x 1045.97
Display Area (H X V) (mm)	Tr=6ms / Tf=6ms	Tr=6ms / Tf=6ms	Tr=6ms / Tf=6ms	Tr=7.5ms / Tf=7.5ms	
Response Time	AC 100V - 240V (60/50 Hz)				
POWER REQUIREMENT	200W	240W	TBD	TBD	
POWER CONSUMPTION - Watts	0°C ~ 40°C (32°~104°F)				
WORKING TEMPERATURE	10%RH ~ 85%RH (Non Condensed)				
WORKING HUMIDITY	-10°C ~ 80°C (14°~176°F)				
STORAGE TEMPERATURE	10%RH ~ 85%RH (Non Condensed)				
STORAGE HUMIDITY	22.6 Kg - 50 lbs.	30.0 Kg - 66 lbs.	TBD	TBD	
WEIGHT (w/o Stand, PIPM* & Packaging)	31.75 Kg - 70 lbs	39.0 Kgs -86 lbs.	TBD	TBD	
WEIGHT (w/ Packaging) (w/o PIPM*)	1080 x 645 x100 mm	1245 x 721 x 76 mm	TBD	TBD	
DIMENSION (WxHxD) (w/o Stand, PIPM and Packaging)	42.36 x 25.2 x 3.94 inches	49 x 28.4 x 3 Inch	TBD	TBD	
DIMENSION (WxHxD) (w/o Stand, PIPM and Packaging)	1219 x 863 304 mm	1475 x 975 x 305 mm	TBD	TBD	
PACKAGING DIMENSION (WxHxD)	48 x 34 x 12 inches	58.0 x 38.25 x 12.0 inch	TBD	TBD	
PACKAGING DIMENSION (WxHxD)					

Media Production Supported Format Options

- (1) 3rd Party SFP+ Decoder SMPTE 2110 / SMPTE 2022-6
 (2) PIPM* H/W & S/W Option SMPTE 2110 / SMPTE 2022-6 / SMPTE 2022-7
 PIPM-5 Module SMPTE 2110 / SMPTE 2022-6
 PIPM-R-7 Module SMPTE 2110 / SMPTE 2022-7

Please note that the technical details shown here are provisional specifications (as of Aug 2019). The Information is subject to change without notice.

* PIPM *Plura IP Platform Module*

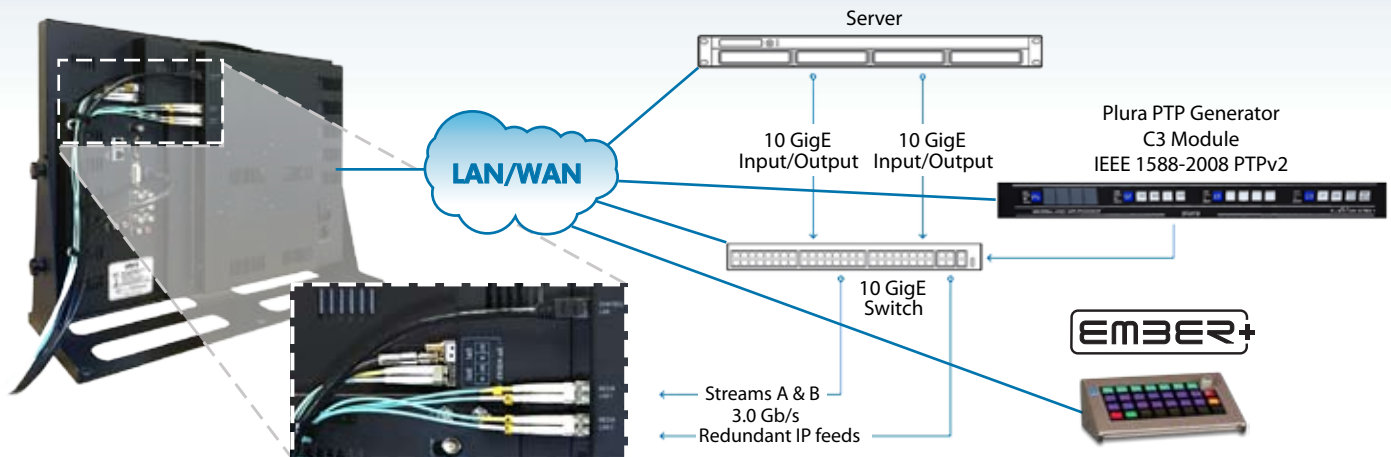
PIPM “Plura IP Platform Module”

The PIPM module can decode and analyze a wide variety of media formats across SFP+ 10G high capacity IP interface. There are two different platforms with three different monitoring levels. All modules can be integrated in any size SFP-H monitor.



PIPM-5, "Plura Software Stack IP Platform" computing core module integrated with Preview Level S/W license and one Codec License included. PIPM-5 support decoding and analyzing media formats such as 2110 and 2022-6 in addition it provides MSL “Master Source List” monitoring capability. The PIPM-5 can be integrated into any size SFP-H monitor. Additional Codec Licenses and other options are available.

PIPM-R-7, "Plura FPGA based module supports 3G SMPTE ST 2110 signals across 10 GigE and it features 2x 10 GbE SFP+ cages complying with SMPTE ST 2022-7, providing redundancy protection for critical distribution and monitoring applications “hitless switching”. The PIPM-R-7 can be integrated into any size SFP-H monitor.



SFP-H with Smart Service Telemetry & Scalable IP Monitoring Solution



The SFP-H is integrated with powerful H/W & S/W platforms to support Coaxial 3Gb/s BNC I/O connectivity, Coaxial SFP I/O connectivity, IP SFP+ over Fiber decoding "ST-2110 & ST-2022" with Third-Party H/W decoder and the NEW PIPM "Plura Software Stack IP Platform". The new PIPM is integrated and optimized with Ember+ and ability to automate and provide Smart Service Telemetry Platform on the display. Such as smart SCOPE or any other third-party telemetry platform.

PIPM-Module Platforms

The PIPM module can decode and analyze a wide variety of media formats across SFP+ 10G high capacity IP interface. There are two different platforms with three different monitoring levels. All modules can be integrated into any size SFP-H monitor.

PIPM MODULE #	DESCRIPTION	Media Format Decoding & Monitoring Options					
		DECODE				Master Source List	Hitless Switching Redundancy
		No of Streams	2110	2022-6	2022-7	MSL	HSR
PIPM - 5	"Plura Software Stack IP Platform" computing core module integrated with Preview Level S/W license and one Codec License included. It can be integrated into any size SFP-H monitor. Additional Codec Licenses and other options are available. Check ordering information.	1	X	X		X	
PIPM - R - 7	Plura-R-7. "Plura IP Platform" FPGA based module supports 3G SMPT ST 2110 signals across 10 GigE and it features 2x 10 Gbe SFP+ cages complying with SMPT ST 2022-7, providing redundancy protection for critical distribution and monitoring applications "hitless switching".	2	X		X		X

PIPM-Series Specifications:

FUNCTION		PIPM-5	PIPM-R-7
INPUT	SFP+Ethernet-10G	Dual 10G ⁽¹⁾ + Management	
OUTPUT	SDI	1EA Serial Digital , 3Gb/s, 1.485Gb/s, 270Mb/s, BNC Jack	
	HDMI	1EA, HDMI, 19pin Female	
DIGITAL MEDIA FORMAT	SMPTE ST-2110	SFP+ Ethernet -10G ⁽¹⁾	
	SMPTE ST-2022-6	SFP+ Ethernet -10G ⁽¹⁾	
	SMPTE 2077-7	Dual SFP+ Ethernet -10G ⁽²⁾	
	SMPTE 428.1M	2048x1080P (24/25)	
	SMPTE 425(3G)	1080p(60/59.94/50/30/29.97/25/24/23.98/30sF/29.97sF25sF/24sF/23.98sF) 1080i (60/59.94/50)	
	SMPTE 260M	1920x1035i(60/59.94)	
	SMPTE 292M	1920x1080i (50/59.94/60) 1920x1080P (30Psf/25Psf/24Psf/30/25/24)	
		1080P(30/29.97/25/24/23.98)	
	SMPTE 372M	1080i(29.97/25/24/23.98)	
		720P(60/59.94/50)	
	SMPTE 296M	1280x720P (50/59.94/60)	
SMPTE 259M/C	480i(59.94)		
	576i(50)		
		H Frequency Range : 22~82KHz, V Frequency Range : 55~90Hz,	
	HDMI	Maximum Resolution : UXGA at 60Hz	
		Maximum Pixel Rate : 162MHz	
AUDIO OUTPUT	SDI Audio Output	De-embedded Audio, 1-16CH	
I/O PORT	RS232/422	1EA, RS-232/422, Serial interface	
	Ethernet Port	RJ-45 8 pin Ethernet port, 100Mbps, supported for PIPM management applications	
CONTROL	Wireless	Mini Wireless Keyboard & Touchpad	
	HTTP	HTTP Web Interface	
MEDIA DECODING PER LICENCE ⁽¹⁾	ST-2110	X	X
	ST-2022-6	X	
	ST-2022-7		X
MONITORING OPTIONS	Master Source List "MSL"	X	
	Hitless Switching Redundancy "HSR"		X
SYSTEM	Processor	Intel® Core™ i5	FPGA
	Operating System	Linux	

Please note that the technical details shown here are provisional specifications (as of Aug 2019). The Information is subject to change without notice.

www.plurainc.com

U.S.A. • Germany • U.A.E. • S.Korea