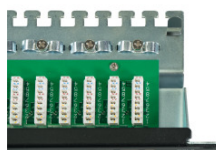
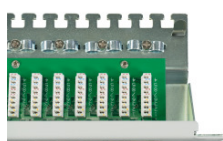
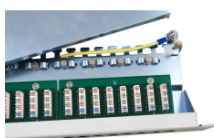
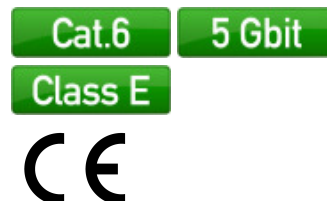


# DATASHEET

## Patchpanel STP 24xRJ45 Cat.6, 19" 1U



### Description

The high quality of the shielded Cat.6 RJ45 patch panel ensures excellent performance for 5 Gigabit Ethernet applications.

19" mounting, 1U

24 Ports

LSA connection strip for installation cable AWG24..AWG22

Color code according to TIA / EIA 568 A / B

Lid with quick release

With earthing terminal

### Scope of delivery:

24 cable ties, Instruction manual, 4 screw M6x18mm with nuts

### General data

Mounting method	482.6 mm (19 inch)-installation
Category	6
Transmission	5 Gbit
Bandwidth	250 MHz
Number of height units	1
Connection type	LSA
Type of connector	RJ45 8(8)
Screened	True
Cross section	AWG 24 - AWG 22
Colour code	acc. TIA/EIA 568A/B
Complaint to UL94	V-0

This datasheet was created automatically on 18-11-2020 . Technical changes reserved.



# DATASHEET

## Patchpanel STP 24xRJ45 Cat.6, 19" 1U

### Mechanical characteristics

Housing material Panel	Steel, 1.5mm
Housing material of RJ45 jacks	PBT
Housing material LSA-terminal	PC
Material LSA contacts	Phosphor bronze, tinned
Contact coating	3 µ" gold plated
Durability LSA contacts	200
Mating cycles RJ45 jack	750

### Dimensions

Height	44.5 mm
Width	482.6 mm
Depth	108.0 mm

### Environmental conditions

Temperature range (Storage)	-40 – 85 °C
Temperature range (Operation)	0 – 70 °C

### Electrical characteristics

Electrical strength	125 V AC RMS
Dielectric Withstanding Voltage	750 V AC 60Hz
Current Rating	1,5 A
Insulation Resistance	1000 MΩ
Contact Resistance	100 mΩ
POE Standard	POE;POE+

### Available variants

Article no.	Title	Number of buses/couplings	Colour	RAL-number
37667.1M	Patchpanel STP 24xRJ45 Cat.6, 19" 1U, RAL7035 grey	24	grey	7035
37667SW.1M	Patchpanel STP 24xRJ45 Cat.6, 19" 1U, RAL9005 black	24	black	9005

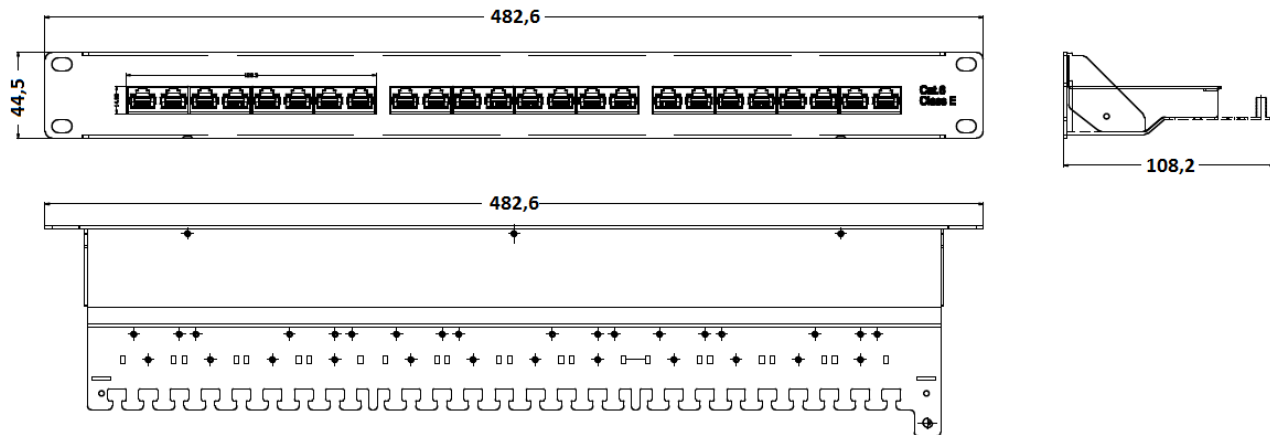
This datasheet was created automatically on 18-11-2020 . Technical changes reserved.



# DATASHEET

## Patchpanel STP 24xRJ45 Cat.6, 19" 1U

### Technical drawings



### accessory

81022.100

Cable Ties

This datasheet was created automatically on 18-11-2020 . Technical changes reserved.

