

TENSIONED ELPRO LARGE ELECTROL

Motorized projection screen for wall or ceiling installations



Product specifications:

- Electrically operated projection screen 230 volt (50Hz) with a usage of no more than 0.69 Ampere (158.7 Watt).
- The motor is mounted on the left side and can be reached through a service hatch in the steel casing.
- The motor is mounted inside the roller, 65 cm long, 4 wire, 12 rotations per minute, maintenance free, integrated brake and thermal overload cut-out.
- The end positions are pre-set.
- The 4 wire connection is integrated into the end cap and can be connected to the electric installation with the connector and standard cable.
- Suitable for wall and ceiling mounting with the supplied flexible mounting brackets which can be positioned 100cm from either endcap.
- The steel square casing (23,9x27,6cm) is galvanised on the inside and on the outside powder coated with a matte structure coating (RAL 9010).
- The screen fabrics are flame retardant and seamless in the viewing area.
- Each side of the surface has a tab guide cable system to maintain even lateral tension and hold surface flat.
- Custom slat bar with added weight maintains vertical tension on the screen surface. The ends of the slat are protected by heavy duty plastic caps enclosing a preset adjustable mechanism for screen tensioning.
- The projection fabrics have a black backing.
- Standard 3 position wall switch is supplied.
- The projection screen is CE marked and satisfies the strictest quality and safety requirements.

Aspect Ratios:

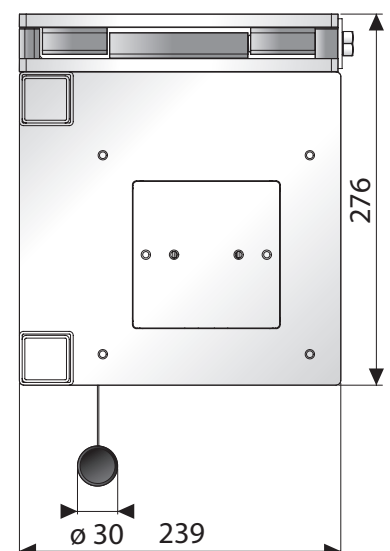
16:10

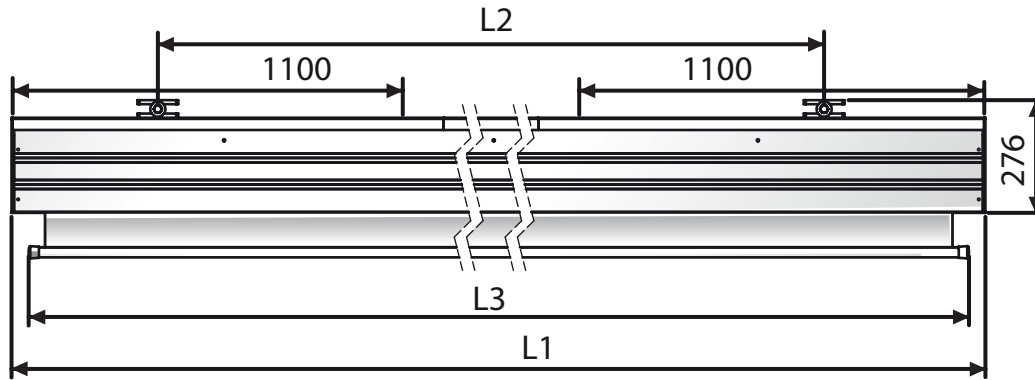
16:9

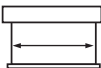
4:3

Available dimensions

Minimum width: 400 cm
Maximum width: 450 cm





		Viewing Area	Dimensions			Black drop	Net weight
		cm	L1 mm	L2 mm	L3 mm	cm	kg
16:10	254 x 400	244 x 390	4430	3330	4196	30	133
	285 x 450	275 x 440	4970	3870	4620	30	144
16:9	229 x 400	219 x 390	4430	3330	4158	30	132
	258 x 450	248 x 440	4970	3870	4608	30	143
4:3	300 x 400	290 x 390	4430	3330	4246	30	135
	340 x 450	330 x 440	4970	3870	4646	30	146

Accessories - control options

For projection screens with a standard motor / delivered as standard with a wall switch

- Easy Install RF remote control (868,3 Mhz)
 - Easy Install wireless projectorcoupling (868,3 Mhz)
 - Easy Install wireless RF wall switch (868,3 Mhz)
- Easy Install RF remote control with projectorcoupling (868,3 Mhz)
- Easy Install projectorcoupling with cable (868,3 Mhz)
- Easy Install IR remote control (868,3 Mhz)
- Easy Install plug & play relaybox with potential free contacts (868,3 Mhz)
 - Easy Install plug & play RS232/RS422 control kit
 - Easy Install plug & play RS232/RS422 with IP control kit
- Keyswitch

Accessories - installation

- Ceiling brackets (100 cm.)
- Set extension brackets
- Bracket kit for easy mounting in soffit

Available standard resolution projection surfaces

All screen surfaces are seamless in the viewing area.

Matte White

Gain: 1.0
Viewing Angle: 120°
Base material: Vinyl
Fire retardancy: B2
Black backing: Yes
Opacity rating: > 99 %
Seamless: Yes
GreenGuard certification: Yes

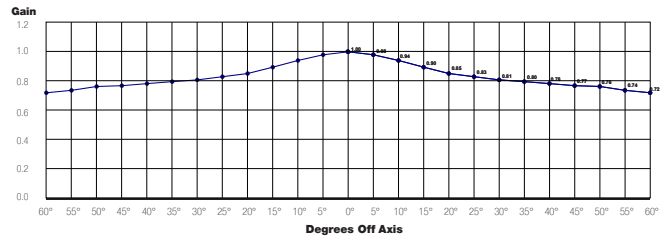


Standard: UL 2818 - 2013
Standard for Chemical Emissions
for Building Materials, Finishes and
Furnishings

Certification number

Greenguard -
5100-410

Greenguard Gold -
5100-420



Pearlescent

Gain: 1.5
Viewing Angle: 80°
Base material: Vinyl
Fire retardancy: B2
Black backing: Yes
Opacity rating: > 99 %
Seamless: Yes
GreenGuard certification: Yes

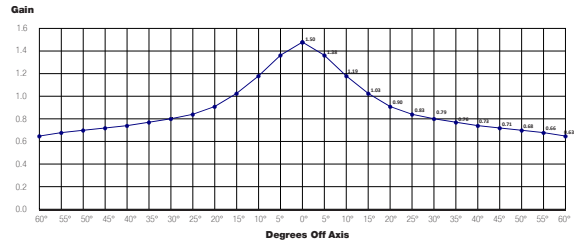


Standard: UL 2818 - 2013
Standard for Chemical Emissions
for Building Materials, Finishes and
Furnishings

Certification number

Greenguard -
5115-410

Greenguard Gold -
5115-420



Da-Tex (rear projection)

Gain: 1.3
Viewing Angle: 60°
Base material: Vinyl
Fire retardancy: B2
Seamless: Yes
GreenGuard certification: Yes

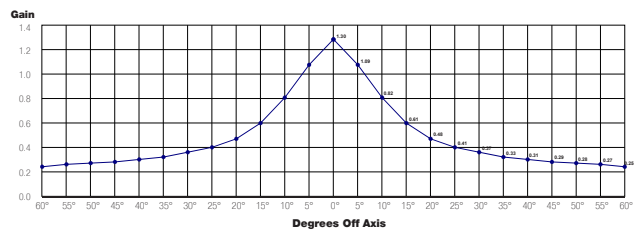


Standard: UL 2818 - 2013
Standard for Chemical Emissions
for Building Materials, Finishes and
Furnishings

Certification number

Greenguard -
5106-410

Greenguard Gold -
5106-420



Certifications

- Products are manufactured in an ISO14001 certified facility
- Projecta is an ISO 9001 certified company
- REACH - Registration, Evaluation, Authorisation and Restriction of Chemical substances.
- RoHS - Restriction of Hazardous Substances.
- WEEE - Waste Electronic and Electrical Equipment Regulations.



Customisation

Give exact the sizes of the projection screen you need:

Viewing size: _____ Height (cm.) x _____ width (cm.)

Surface: _____ Border top: _____ (cm.) Border bottom: _____ (cm.)

RAL color case and plastic parts: RAL _____

Motor positioned on right side

Screen fabric mounted reversely

Remarks: _____

Available High Resolution projection surfaces

All screen surfaces are seamless in the viewing area.



HD Progressive 0.6

Gain: 0.6
Viewing Angle: 170°
Base material: Vinyl
Fire retardancy: B2
Black backing: Yes
Opacity rating: > 99 %
Seamless: Yes
GreenGuard certification: Yes

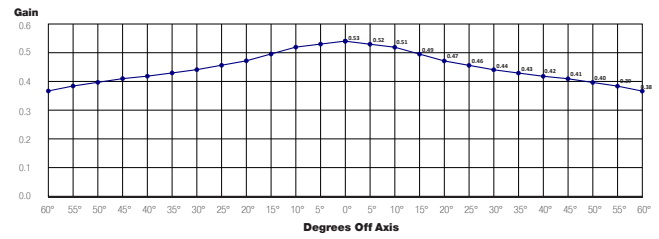


Standard: UL 2818 - 2013
Standard for Chemical Emissions
for Building Materials, Finishes and
Furnishings

Certification number

Greenguard -
11065-410

Greenguard Gold -
11065-420



HD Progressive 0.9

Gain: 0.9
Viewing Angle: 170°
Base material: Vinyl
Fire retardancy: B2
Black backing: Yes
Opacity rating: > 99 %
Seamless: Yes
GreenGuard certification: Yes

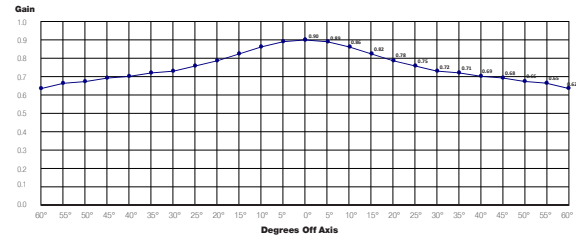


Standard: UL 2818 - 2013
Standard for Chemical Emissions
for Building Materials, Finishes and
Furnishings

Certification number

Greenguard -
11066-410

Greenguard Gold -
11066-420



HD Progressive 1.1

Gain: 1.1
Viewing Angle: 170°
Base material: Vinyl
Fire retardancy: B2
Black backing: Yes
Opacity rating: > 99 %
Seamless: Yes
GreenGuard certification: Yes

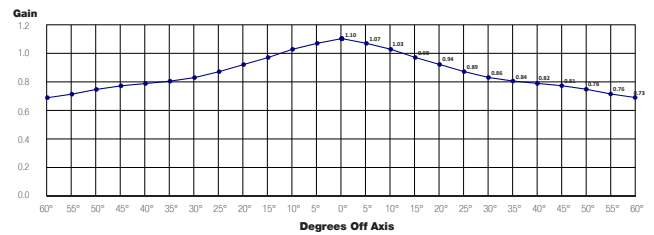


Standard: UL 2818 - 2013
Standard for Chemical Emissions
for Building Materials, Finishes and
Furnishings

Certification number

Greenguard -
11067-410

Greenguard Gold -
11067-420



HD Progressive 1.3

Gain: 1.3
Viewing Angle: 150°
Base material: Vinyl
Fire retardancy: B2
Black backing: Yes
Opacity rating: > 99 %
Seamless: Yes
GreenGuard certification: Yes

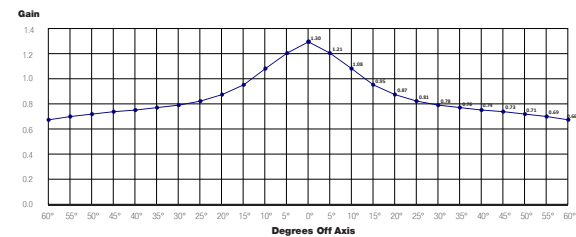


Standard: UL 2818 - 2013
Standard for Chemical Emissions
for Building Materials, Finishes and
Furnishings

Certification number

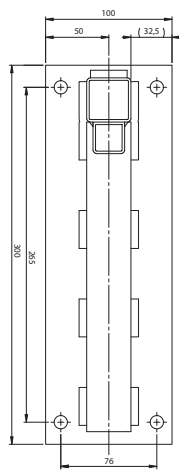
Greenguard -
42729-410

Greenguard Gold -
42729-420

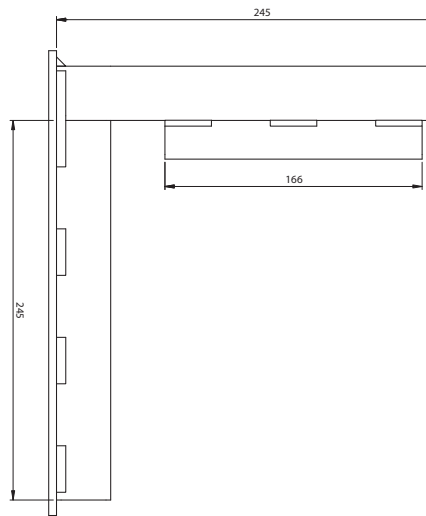


Elpro Large - wall mounting bracket included

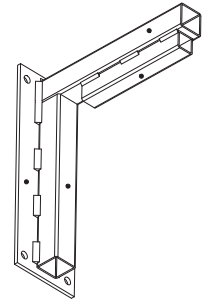
(Dimensions in mm)



front view

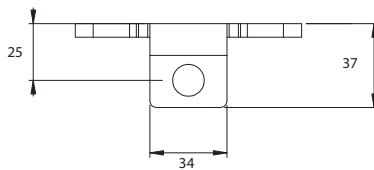


side view

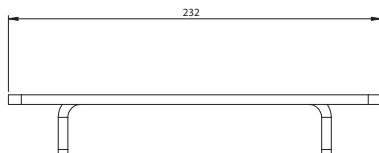


Elpro Large - ceiling mounting bracket included

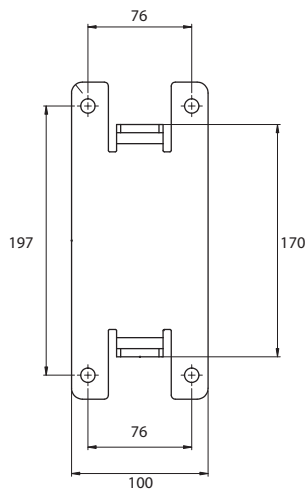
(Dimensions in mm)



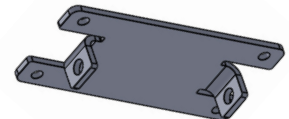
front view



Side view



Bottom view



Warranty

Projecta provides a limited 5 year warranty on the Elpro Concept range and a limited 2 year warranty on all other products. The warranty on the motor of electrical screens is 5 year. All warranties are in effect beginning the date the product was invoiced by Projecta.