



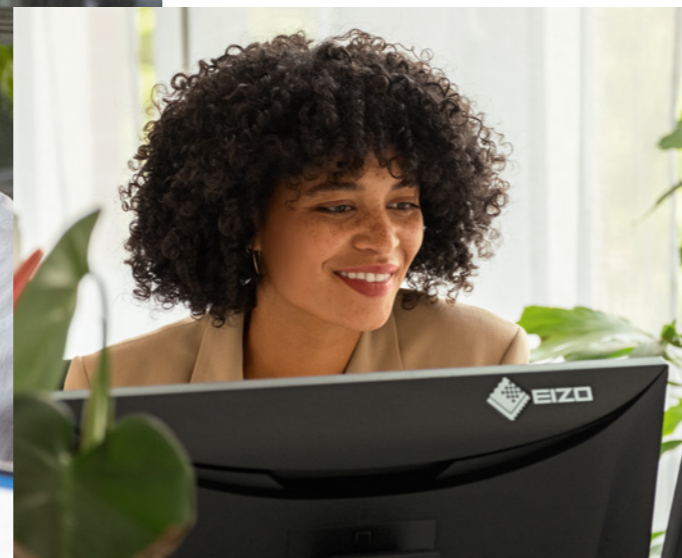
FlexScan office monitors

Working with the Best



New ways of working. New requirements.

Hybrid and flex work on the PC have become an integral part of our everyday lives, no matter whether working in the office, from home or anywhere in between. Yet, one thing still holds true: you can only do your best work if you have the best tools.



By now, more than half of all employees in Europe sit behind a computer – the trend is growing. And the number of requirements for a modern screen workstation is growing right alongside it. We work hard every day not only to meet these requirements, but to exceed them. Our monitors offer you everything you need to work ergonomically – no matter where you do it from.

Whether for office applications, accounting, document imaging or CAD, with the FlexScan product line – the centrepiece of EIZO's portfolio – we offer the best solution for every workstation. From the best image quality to the best ergonomics to the best features, we know what

you expect from an EIZO monitor – and you have the right to expect as much. After all, you give your utmost each and every day – and that's why you deserve the best partner.

What's more, responsible entrepreneurial behaviour towards customers, employees and our planet is firmly anchored in EIZO's corporate philosophy. That's why we sustainably and responsibly manufacture our monitors in accordance with both the latest environmental and the highest quality standards and equip them with sophisticated energy features. This not only saves power and in turn resources, it also guarantees a long service life – which is why our FlexScan monitors come

with a full five-year warranty with on-site replacement service.

And that's why we can make you a simple yet decisive promise: **Working with the Best. EIZO.**



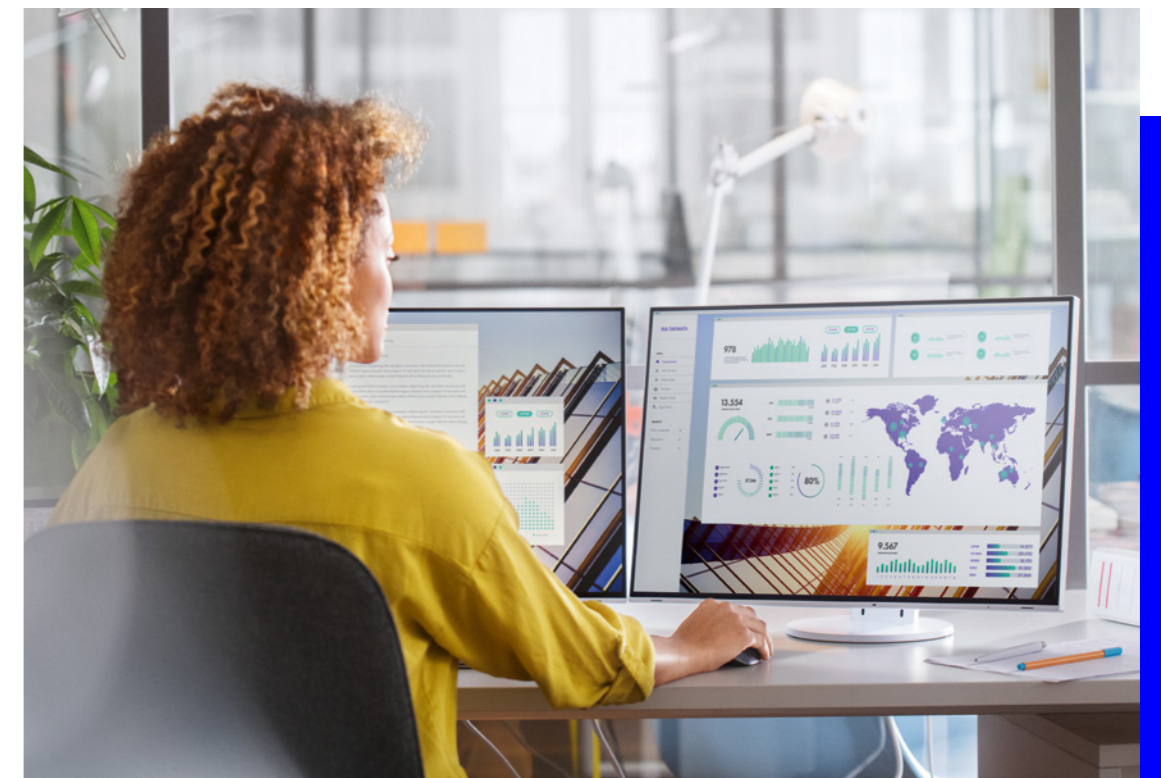
Quality time: you deserve it.

There's a lot that speaks for our FlexScan monitors –
first and foremost, their excellent image quality.

We have a simple motto at EIZO: nothing is so perfect that it can't still be improved. And it goes without saying that this holds true for image quality, too. After all, as a driver of innovation and a leader in quality in monitor technology, we constantly strive to make the best even better.

We take charge of the entire development and manufacturing process to make sure nothing is left to chance. That means we develop and manufacture everything ourselves and exclusively use high-quality materials for every important component.

Plus, nearly every component and each individual monitor is subject to extensive testing and adjustments before delivery – all in order to make an already perfect picture even better. Ultimately, everything we do, we do with one thing in mind: your satisfaction.



We don't just meet standards – we set them.

The best technologies for the best image.

4K resolution to ensure the highest image quality

A 4K UHD monitor from EIZO offers you the best support in the office thanks to its extraordinary display quality created by its native resolution of 3840 × 2160 pixels. The resulting image sharpness presents texts and graphics with particular clarity and precision.

Steady viewing angle with IPS panel

The excellent viewing angle stability of the IPS panel guarantees that you will barely notice any deviation in brightness, colour, sharpness or contrast, even at a slanted viewing angle. Colours and contrasts look the same in the corners as they do in the centre of the screen.

Factory adjustments and long-term tests to ensure ultimate quality

Your EIZO monitor has already gone through a lot by the time it arrives at your door. That's because only devices that have been subjected to the most thorough testing possible are allowed to be dispatched from our facilities – that means the colour temperature, gamma, white balance and brightness of each monitor are all carefully measured and adjusted. In addition, each monitor is inspected by the trained eyes of an EIZO employee. We also subject new products to numerous long-term tests that simulate thousands of hours of monitor usage time before series production to be able to guarantee the lasting product and image quality expected from EIZO.

10-bit LUT: precise colour control

An image can only be perfect if the colours are, too. This is why EIZO office monitors have a 10-bit look-up table at a minimum, which allows the colour information to be assigned much more precisely than with conventional 8-bit LUTs. The finest colour gradations ensure that gradients are always perfectly displayed, while also offering customised adjustment

options. For example, you can adjust the white balance from 4000 K to 10000 K in intervals of 500 K.



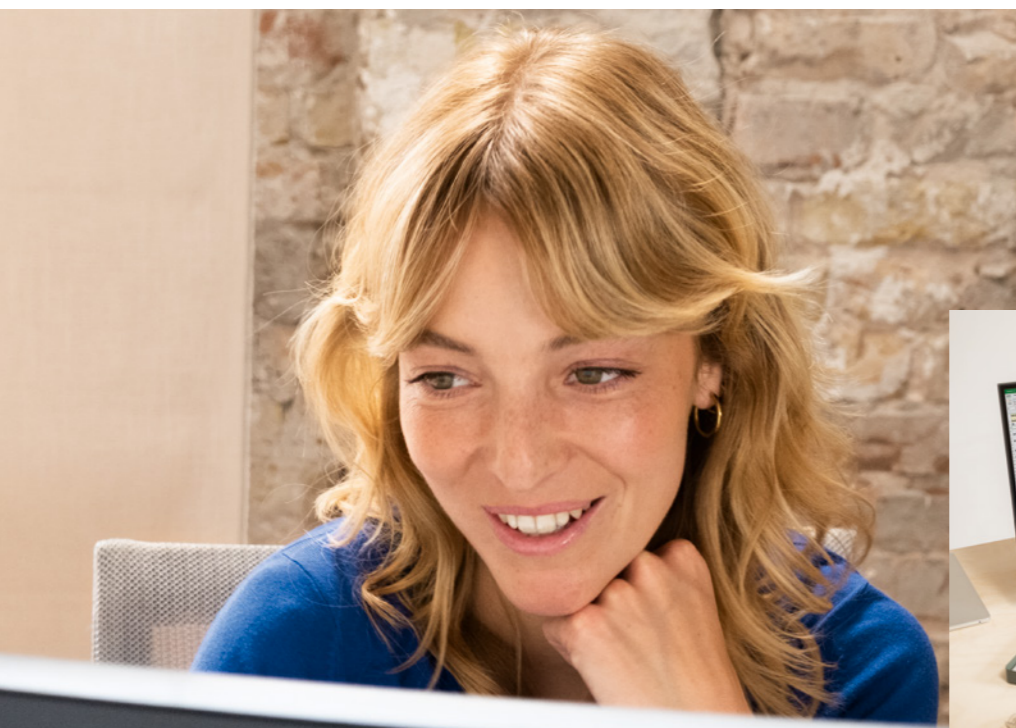
Typical monitor display with 8-bit LUT



Display with 10-bit LUT

Image processor (ASIC)

We rely on our own expertise when it comes to image processors. Our many years of experience go into developing our own image processors (ASIC) so we are sure to get the best out of our LCD panels.





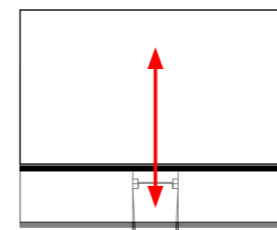
Work – without the workout.

Ergonomic FlexScan monitors from EIZO: for more comfort at your workstation.

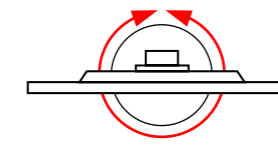
Our goal is to develop a flexible screen that meets all the requirements of a modern workstation. After all, the digital transformation is in full swing and an increasing number of people are spending several hours at their desk each day. And that can have negative effects. A large number of people who work at computer workstations suffer

from back and neck pain, while many also report having eye problems. EIZO has found a solution to these issues. In addition to alleviating eye and back strain, our innovative high-end monitors also meet the user's unique requirements. For example, EIZO monitors can be swivelled, rotated and tilted into the position that is most comfortable

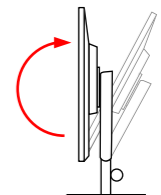
for the user's posture. They also have several other ergonomic features that reduce eyestrain, thus boosting concentration. After all, we think the workstation should adapt to the person, not the other way around.



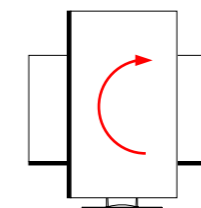
Height adjustable by
up to 192 mm



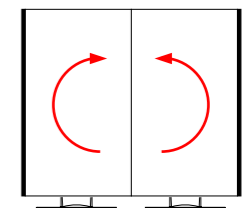
Can be swivelled up to 344°



-5° to +35°
tilt angle



90° – one-sided pivot functionality
of slim monitors



±90° – two-sided pivot functionality
of most Ultra-slim monitors

Flexible stand: make yourself comfortable

The monitor stand of the FlexScan models allow you to position the monitors ergonomically. You can tilt the screen between 5° forward and 35° backward and swivel it. Depending on the model, you can rotate the

display by 90° into portrait format, adjust its height by up to 192 mm and lower it down to the base plate of the stand.

Fit eyes as standard.

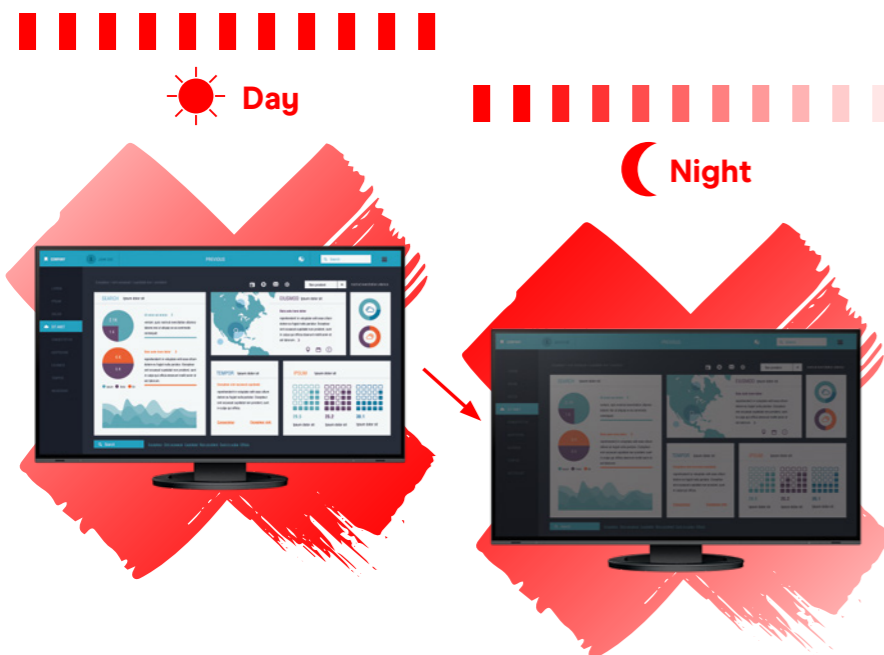
EIZO monitors boast intelligent features that make sure you can always enjoy a constantly perfect image and your eyes stay fitter for longer.

Auto EcoView: a difference like day and night for your eyes

Your screen is always in sight – and you have the perfect set-up for your eyes. All EIZO FlexScan monitors constantly utilise the Auto EcoView functionality to measure the changes in the ambient lighting conditions and automatically optimise screen

brightness to tackle the problems posed by the changing lighting conditions throughout the day. This reduces the amount you are blinded and also prevents the monitor from being too dark in lighter environments. The Ultra-slim and 4K monitors feature a unique two-point control panel that enables the user to set a minimum and maximum brightness level between which the

monitor automatically adjusts the screen brightness. The monitor sensor automatically identifies at which level of ambient light you adjust the brightness of the monitor – day or night, light or dark. When the level of ambient light then changes, the adjustment you have just made is used as a basis to adjust the monitor brightness accordingly. The feature is intuitive and runs in the background without the user noticing.



Anti-glare coating: increasing concentration by reducing reflection

All EIZO monitors are equipped with an anti-glare coating that reduces the amount of distracting reflections. This allows you to concentrate fully on your work without having to adopt uncomfortable positions while sitting in front of your monitor – positions that put a strain on your neck and muscles.

Paper mode: the best setting for working

Paper mode optimises the brightness, contrast and colour temperature of the monitor, simulating the experience of reading real paper. It also reduces the levels of blue light. This significantly reduces the strain

on your eyes, especially if you constantly switch between looking at a monitor and looking at paper.

Automatic colour mode: optimum images at the touch of a button

Automatic colour mode allows you to assign a specific display mode to individual applications. The screen switches automatically to the predefined mode as soon as you open an application. Whether you are surfing the web, looking at graphics in Office or using a word processing program, automatic colour mode will ensure that you are always using the best setting for the task.

Hybrid control: flicker-free images, without glare

Conventional methods used to control the backlight on monitors can cause an unpleasant flickering. The EcoView series of monitors use technology developed by EIZO, meaning they flicker far less in comparison to LED backlit monitors offered by other manufacturers. Thanks to the hybrid control, you can reduce the display brightness to less than 1%, which enables you to work more comfortably in poorly lit environments.

Figures vary slightly according to model.



High-end without end: EIZO is redefining longevity.

An EIZO monitor is an investment in the future in more ways than one.

Quality stands for longevity and thus ultimately for both cost-effectiveness and environmental protection. Why? Something that lasts a long time doesn't need to be replaced by something new as quickly, saving material and thus resources. So, an investment in quality is an excellent decision – for both you and the environment. We believe so strongly in the quality of our monitors that we don't just promise the best quality – we even guarantee it. The proof is our five-year warranty with an on-site exchange service, which

eliminates follow-up costs that would accrue in the absence of a warranty scheme for things such as repairs, downtimes or the fees for rental devices. This means our five-year warranty also ensures your investment will continue to pay off in the future. We know precisely what our monitors do and we want them to keep it up for a long time to come. To make that happen, we need to be sure that each and every individual component is the best and meets this requirement. That's why we research, develop

and manufacture our products in-house and we do not outsource any of our vital work as part of our highly developed manufacturing process. The result is monitors that both meet high-end requirements and have a longer service life and that also keep power consumption extremely low thanks to numerous sensors and sophisticated functions. Which brings us back to the environment – and to cost-effectiveness of course.



Protect the environment while you work.

You don't waste time in the office.
So don't waste kilowatt-hours either.

Auto EcoView: more than just an ergonomic feature

You can enjoy energy savings of up to 50% in comparison with a monitor operating at full brightness since Auto EcoView constantly adjusts display brightness to the ambient light.

Excellent: safety and environmental sustainability

Most FlexScan models meet the requirements of the TCO Certified Generation 9 display standard and correspond to strict international guidelines for ergonomics and energy conservation pursuant to EPA ENERGY STAR and TÜV ergonomics.



EcoView Optimizer: cost savings of up to 30%

EcoView Optimizer recognises image content and reduces the backlight automatically without reducing the image quality, which in turn decreases power consumption.

Does not apply to the S1934 model

Zero-watts: saving energy by powering down

Our FlexScan models have a mechanical power switch that results in zero-watt consumption when the monitor is switched off. But each model also uses 0.5 W or less in standby mode

Does not apply to the S2133 and S1934 models

Our contribution to the Sustainable Development Goals (SDGs)

As part of its corporate social responsibility (CSR) activities, EIZO contributes to the Sustainable Development Goals (SDGs) adopted by the United Nations. FlexScan monitors are environmentally friendly, highly energy-efficient monitors made from recycled plastics and sustainably sourced materials. The packaging consists mainly of recycled material that can be reused in responsible recycling systems.

SUSTAINABLE DEVELOPMENT GOALS



Long live your monitor.

How to not just meet the highest quality requirements, but to exceed them.



Five-year warranty. No worries.

As a result of constant research, further development and painstaking quality controls, EIZO is able to offer a five-year warranty for all FlexScan models, including an on-site replacement service – up to three years longer than typical

warranties. For you, this means the highest possible investment security and lower TCO (total cost of ownership). The purchase price may be higher, but the investment and service costs are lower with an EIZO monitor because the service life is substantially longer and no repair costs or associated follow-up costs accrue in the first five years – guaranteed.

Research and development

Our unique research and development department enables us to develop pioneering technologies and integrate them perfectly into our products.

Production

We manufacture our monitors in-house by combining the latest mechanical manufacturing techniques with the most meticulous craftsmanship as this is the only way we can guarantee that our products are manufactured to the highest quality.

Quality control

We ensure that our monitors are resistant to electromagnetic interference, do not emit disruptive signals and comply with international provisions in our in-house measurement laboratories. We regularly inspect the image quality of our monitors in our longevity tests.

Maximum flexibility thanks to maximum connectivity.

Unlimited possibilities: for ports and for tidiness.

The modern workplace is now tidier and, more importantly, offers greater flexibility than ever before. Employees no longer need their own workplace at the office. More and more these days, workstations are shared by multiple people who change desks from day to day or

people simply work from home. That's why it is more important than ever for users to always be flexible and have easy, convenient access to the necessary IT infrastructure at all times. EIZO allows you to do exactly that. Whether it's docking functions, multi-screen solutions,

KVM switches or practical cable routing, they all ensure you can set up your workstation fast and easily, no matter where you are and with everything in the right place.



Daisy Chain Functionality

You can use USB-C or DisplayPort to connect several monitors in series. That means only one monitor needs to be connected to the computer, while the rest are then connected to one another. If you're using the USB-C port, the monitors are all interlinked via USB data cables, which significantly reduces the number of cables trailing out of the PC.

USB-C Daisy Chain with the EV2795, EV2495 and EV2490 models.

USB-C Docking

Even fewer cables, even more freedom. Certain models that feature a USB-C port even have a LAN interface and route the network connection to the attached computer via the port. This turns the monitor into a full-featured docking station to transmit audio, video, data and LAN signals and provide charging power. And all this is possible with a single cable connecting the monitor to the computer.

LAN interface with the EV3895, EV2795, EV2495 and EV2490 models.

KVM Switch

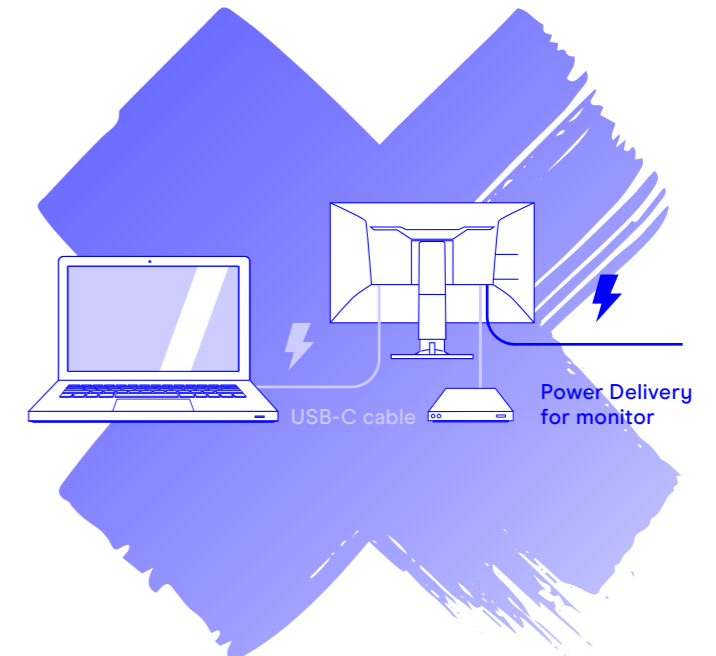
Thanks to multiple USB upstream ports available on several of our monitors, they feature a built-in KVM (keyboard, video and mouse) switch and can be used as a keyboard/mouse switch. This allows, for example, a private and a company computer to share the monitor and be operated with a single keyboard and mouse when working from home. In short, the KVM Switch ensures that work is uninterrupted and makes for a tidy work area.

Applies to the EV3895, EV2795, EV2495 and EV2490 models.

USB-C with Power Delivery

Many FlexScan monitors feature a USB-C port. You can simultaneously transfer video or audio signals, data and charge a laptop or a smartphone all with just one cable. An added plus: the monitor provides power to the USB-C port so there is no need for an additional AC adapter.

Applies to the EV3895, EV3285, EV2795, EV2785, EV2781, EV2495, EV2485, EV2490 and EV2480 models.



Impressive features mean greater comfort.

Everything you need – inside and out. Our FlexScan monitors are carefully designed down to the last detail.

Signal ports*

On the back of the housing, DisplayPort and HDMI, DVI-D, D-Sub and USB-C ports offer you a wide range of connection options for digital and analogue signals.



Data connection*

Each model features a USB hub with two, three or four downstream ports for peripheral USB devices.



Cable routing

A cable holder, clip or cable cover ensures a clean desk and prevents messy cabling, depending on the model.



Cable cover

Thin Client mount

There is a Thin Client mount available as an optional accessory for several EcoView monitors. It's easy to mount to the monitor base and is suited for attaching Thin Client systems with VESA mount points.



Audio output*

The speakers are either integrated into the bezel and perfectly flush with the screen or discreetly integrated into the back. An integrated headphone connection ensures additional comfort.

Carry handle*

The built-in carry handle on the back of the monitor makes it easy and safe to carry the monitor when unpacking, setting up or transporting the monitor from one place to the next.



*Feature varies depending on the monitor series and the model. Please see the tables starting on page 22 for more information.

Intelligent software for optimum work.

Screen InStyle – power consumption, colour, brightness and other settings can be easily managed for single monitor or multi-monitor solutions.

Automatic colour mode

You can select specific monitor settings for individual applications. Your screen automatically switches to the colour mode you defined for the application as soon as you activate it.

Less blue light

The Circadian Dimming functionality reduces the amount of blue light by lowering the colour temperature of the monitor over the course of the day.

Power management with multiple monitors

Use the power button on one monitor to switch all connected screens either on or off, and when monitors have a presence sensor, all monitors will automatically go into sleep mode during your absence.

Colour briefcase: personalised settings everywhere you go

Take your personalised screen settings with you to wherever you connect your laptop or tablet to a modern EIZO monitor. Your settings are easily and automatically imported when you connect your laptop via a USB-C cable to a monitor with Screen InStyle support. This leads to improved comfort and increased

work efficiency in offices that make use of hot desking or in your home office.

Synchronisation of screen settings

Every colour setting you select on one monitor is transferred to your other monitors to ensure consistent colouring across all monitors. The automatic brightness adjustment feature is also regulated homogeneously.

Input signal selection via keyboard

Another practical functionality is the selection of the input signal via hot-key or key combination when several PCs are connected to one monitor. This allows users to work simultaneously with a laptop and PC on a single monitor and easily switch from one to the other. Depending on the monitor, this also applies to the use of Picture-by-Picture or Picture-in-Picture.

Administrator management

System administrators can use Screen InStyle Server, the server application, to remotely control monitors if the connected computers are running Screen InStyle. This means every EIZO monitor in the network can be administered centrally. This means every EIZO monitor on the network can be administered centrally, enabling power consumption to be optimised without an engineer having to physically go to each monitor, for example.

Screen InStyle is available for the Windows operating system, the Ultra-slim monitors and the EV3285 and EV2785 models.

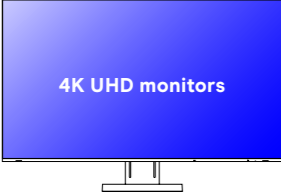
EIZO Monitor Configurator – just roll out the basics

System administrators can use this tool to create presets for all relevant monitor settings. The presets are transferred to the monitor via USB and can be

rolled out via your network or a data carrier so that every monitor is equipped with the basic settings you want.

EIZO Monitor Configurator is available for Ultra-slim monitors and the EV3285 and EV2785 models.

FlexScan monitors at a glance



	EV3285	EV2785	EV3895	EV2795	EV2781	EV2760	EV2495	EV2485	EV2456	EV2490	EV2480	EV2460	EV2451	EV2360	EV2430	S2133	S1934
Screen Size	31.5" Aspect ratio 16:9	27" Aspect ratio 16:9	37.5" Aspect ratio 24:10 curved ultrawide	27" Aspect ratio 16:9	27" Aspect ratio 16:9	27" Aspect ratio 16:9	24.1" Aspect ratio 16:10	24.1" Aspect ratio 16:10	24.1" Aspect ratio 16:10	23.8" Aspect ratio 16:9	23.8" Aspect ratio 16:9	23.8" Aspect ratio 16:9	23.8" Aspect ratio 16:9	22.5" Aspect ratio 16:10	24.1" Aspect ratio 16:10	21.3" Aspect ratio 4:3	19" Aspect ratio 5:4
Resolution	3840 x 2160	3840 x 2160	3840 x 1600	2560 x 1440	2560 x 1440	2560 x 1440	1920 x 1200	1920 x 1200	1920 x 1200	1920 x 1080	1920 x 1080	1920 x 1080	1920 x 1080	1920 x 1200	1920 x 1200	1600 x 1200	1280 x 1024
Max. Brightness	350 cd/m ²	350 cd/m ²	300 cd/m ²	350 cd/m ²	350 cd/m ²	350 cd/m ²	350 cd/m ²	350 cd/m ²	350 cd/m ²	250 cd/m ²	250 cd/m ²	250 cd/m ²	250 cd/m ²	250 cd/m ²	300 cd/m ²	420 cd/m ²	250 cd/m ²
Signal Inputs	1x USB-C 1x DisplayPort 2x HDMI	1x USB-C 1x DisplayPort 2x HDMI	1x USB-C 1x DisplayPort 2x HDMI	1x USB-C 1x DisplayPort 1x HDMI	1x USB-C 1x DisplayPort 1x HDMI	2x DisplayPort 1x HDMI 1x DVI-D	1x USB-C 1x DisplayPort 1x HDMI	1x USB-C 1x DisplayPort 1x HDMI	1x DisplayPort 1x HDMI 1x DVI-D 1x D-Sub	1x USB-C 1x DisplayPort 1x HDMI	1x USB-C 1x DisplayPort 1x HDMI	1x DisplayPort 1x HDMI 1x DVI-D 1x D-Sub	1x DisplayPort 1x HDMI 1x DVI-D 1x D-Sub	1x DisplayPort 1x HDMI 1x DVI-D 1x D-Sub	1x DisplayPort 1x DVI-D 1x D-Sub	1x DisplayPort 1x DVI-D 1x D-Sub	1x DisplayPort 1x DVI-D 1x D-Sub
USB Ports	Upstream: 1x USB-C Downstream: 2x USB-A	Upstream: 1x USB-C Downstream: 2x USB-A	Upstream: 1x USB-C 2x USB-B Downstream: 4x USB-A	Upstream: 1x USB-C 1x USB-B Downstream: 1x USB-C 3x USB-A	Upstream: 1x USB-C Downstream: 4x USB-A	Upstream: 1x USB-B Downstream: 4x USB-A	Upstream: 1x USB-C 1x USB-B Downstream: 1x USB-C 3x USB-A	Upstream: 1x USB-C Downstream: 4x USB-A	Upstream: 1x USB-B Downstream: 2x USB-A	Upstream: 1x USB-C 1x USB-B Downstream: 1x USB-C 3x USB-A	Upstream: 1x USB-C Downstream: 4x USB-A	Upstream: 1x USB-B Downstream: 4x USB-A	Upstream: 1x USB-B Downstream: 2x USB-A	Upstream: 1x USB-B Downstream: 2x USB-A	Upstream: 1x USB-B Downstream: 2x USB-A	Upstream: 1x USB-B Downstream: 2x USB-A	-
USB-C Power Delivery	◆	◆	◆	◆	◆	-	◆	◆	-	◆	◆	-	-	-	-	-	-
USB-C Daisy Chain	-	-	-	◆	-	-	◆	-	-	◆	-	-	-	-	-	-	-
Ethernet Port	-	-	◆	◆	-	-	◆	-	-	◆	-	-	-	-	-	-	-
KVM Switch	-	-	◆	◆	-	-	◆	-	-	◆	-	-	-	-	-	-	-
Stand	Tilt range: 35° backward 5° forward Swivel: 344° Height adjustment: 148.9 mm	Tilt range: 35° backward 5° forward Swivel: 344° Height adjustment: 177.9 mm	Tilt range: 35° backward 5° forward Swivel: 70° Height adjustment: 192.7 mm	Tilt range: 35° backward 5° forward Swivel: 344° Height adjustment: 176.6 mm	Tilt range: 35° backward 5° forward Swivel: 344° Height adjustment: 176.6 mm	Tilt range: 35° backward 5° forward Swivel: 344° Height adjustment: 169 mm	Tilt range: 35° backward 5° forward Swivel: 344° Height adjustment: 182.2 mm	Tilt range: 35° backward 5° forward Swivel: 344° Height adjustment: 182.2 mm	Tilt range: 35° backward 5° forward Swivel: 344° Height adjustment: 158.6 mm	Tilt range: 35° backward 5° forward Swivel: 344° Height adjustment: 191.2 mm	Tilt range: 35° backward 5° forward Swivel: 344° Height adjustment: 191.2 mm	Tilt range: 35° backward 5° forward Swivel: 344° Height adjustment: 140 mm	Tilt range: 35° backward 5° forward Swivel: 344° Height adjustment: 172.7 mm	Tilt range: 35° backward 5° forward Swivel: 344° Height adjustment: 140 mm	Tilt range: 35° backward 5° forward Swivel: 344° Height adjustment: 131 mm	Tilt range: 40° backward Swivel: 70° Height adjustment: 82 mm	Tilt range: 30° backward Swivel: 70° Height adjustment: 100 mm
Five-year Warranty	◆	◆	◆	◆	◆	◆	◆	◆	◆	◆	◆	◆	◆	◆	◆	◆	◆

**EV3285****EV2785****EV3895****EV2795****EV2781****EV2760****EV2495****EV2485****EV2456**

	4K UHD monitors				Ultra-slim monitors									
Type	IPS		IPS		IPS		IPS		IPS		IPS			
Screen size	31.5"/80 cm		27"/68.5 cm		37.5"/95.3 cm		27"/68.5 cm		27"/68.5 cm		24.1"/61.1 cm			
Native resolution	3840 × 2160 (aspect ratio 16:9)		3840 × 2160 (aspect ratio 16:9)		3840 × 1600 (aspect ratio 24:10)		2560 × 1440 (aspect ratio 16:9)		2560 × 1440 (aspect ratio 16:9)		1920 × 1200 (aspect ratio 16:10)			
Display size (H × V)	697.3 × 392.2 mm		596.7 × 335.7 mm		879.7 × 366.5 mm		596.7 × 335.7 mm		596.7 × 335.7 mm		518.4 × 324 mm			
Radius	-		-		2300 mm		-		-		-			
Pixel pitch/pixel density	0.182 × 0.182 mm/140 ppi		0.155 × 0.155 mm/163 ppi		0.229 × 0.229 mm/111 ppi		0.233 × 0.233 mm/109 ppi		0.233 × 0.233 mm/109 ppi		0.270 × 0.270 mm/94 ppi			
Display colours	16.77 million		16.77 million		16.77 million		16.77 million		16.77 million		16.77 million			
Viewing angle (H/V, typical)	178°, 178°		178°, 178°		178°, 178°		178°, 178°		178°, 178°		178°, 178°			
Brightness (typical)	350 cd/m ²		350 cd/m ²		300 cd/m ²		350 cd/m ²		350 cd/m ²		350 cd/m ²			
Contrast ratio (typical)	1300:1		1300:1		1000:1		1000:1		1000:1		1000:1			
Response time (typical)	5 ms (Grey-Grey)		5 ms (Grey-Grey)		5 ms (Grey-Grey)		5 ms (Grey-Grey)		5 ms (Grey-Grey)		5 ms (Grey-Grey)			
Available housing colours	Black (EV3285-BK), White (EV3285-WT)		Black (EV2785-BK), White (EV2785-WT)		Black (EV3895-BK), White (EV3895-WT)		Black (EV2781-BK), White (EV2781-WT)		Black (EV2760-BK), White (EV2760-WT)		Black (EV2495-BK), White (EV2495-WT)			
Inputs	1x USB-C (with HDCP 1.3), 1x DisplayPort (with HDCP 1.3), 2x HDMI (with HDCP 2.2/1.4)		1x USB-C (with HDCP 1.3), 1x DisplayPort (with HDCP 1.3), 2x HDMI (with HDCP 2.2/1.4)		1x USB-C (with HDCP 1.3), 1x DisplayPort (with HDCP 1.3), 2x HDMI (with HDCP 2.2/1.4)		1x USB-C (with HDCP 1.3), 1x DisplayPort (with HDCP 1.3), 1x HDMI (with HDCP 1.4)		2x DisplayPort (with HDCP 1.3), 1x HDMI (with HDCP 1.4), 1x DVI-D, 24 pin (with HDCP 1.4)		1x USB-C (with HDCP 1.3), 1x DisplayPort (with HDCP 1.3), 1x HDMI (with HDCP 1.4)			
Outputs	-		-		-		USB-C Daisy Chain		-		USB-C Daisy Chain			
Digital (H, V)	USB-C: 31-134 kHz, 29-31 Hz, 59-61 Hz, DisplayPort: 31-134 kHz, 29-31 Hz, 59-61 Hz, HDMI: 31-135 kHz, 29-31 Hz, 49-61 Hz		USB-C: 31-134 kHz, 29-31 Hz, 59-61 Hz, DisplayPort: 31-134 kHz, 29-31 Hz, 59-61 Hz, HDMI: 31-135 kHz, 29-31 Hz, 49-61 Hz		USB-C: 31-99 kHz, 29-31 Hz, 59-61 Hz, DisplayPort: 31-99 kHz, 29-31 Hz, 59-61 Hz, HDMI: 31-99 kHz, 29-31 Hz, 49-51 Hz, 59-61 Hz		USB-C: 31-89 kHz, 59-61 Hz, DisplayPort: 31-89 kHz, 59-61 Hz, HDMI: 31-89 kHz, 49-51 Hz, 59-61 Hz		DisplayPort: 31-89 kHz, 59-61 Hz, HDMI: 31-89 kHz, 59-61 Hz, DVI-D: 31-89 kHz, 59-61 Hz		USB-C: 31-76 kHz, 59-61 Hz, DisplayPort: 31-76 kHz, 59-61 Hz, HDMI: 15-76 kHz, 49-51 Hz, 59-60 Hz			
Analogue (H, V)	-		-		-		-		-		-			
Sync formats	-		-		-		-		-		D-Sub: 31-81 kHz, 55-76 Hz			
USB	Upstream: 1x Type C, USB 3.1 Gen.1 (DisplayPort Alt Mode, max. 60 W Power Delivery) Downstream: 2x Type A, USB 3.1 Gen1 (1x 10.5 W Battery Charging function)		Upstream: 1x Type C, USB 3.1 Gen.1 (DisplayPort Alt Mode, max. 60 W Power Delivery) Downstream: 2x Type A, USB 3.1 Gen1 (1x 10.5 W Battery Charging function)		Upstream: 1x Type C, USB 3.1 Gen.1 (DisplayPort Alt Mode, Network, max. 85 W Power Delivery), 2x Type B, USB 3.1 Gen1 Downstream: 4x Type A, USB 3.1 Gen1		Upstream: 1x Type C, USB 3.1 Gen.1 (DisplayPort Alt Mode, network, max. 70 W Power Delivery), 1x Type B, USB 3.1 Gen1 Downstream: 1x Type C, USB 3.1 Gen.1 (DisplayPort Alt Mode, max. 15 W Power Delivery), 3x Type A, USB 3.1 Gen.1		Upstream: 1x Type C, USB 3.1 Gen.1 (DisplayPort Alt Mode, max. 70 W Power Delivery) Downstream: 4x Type A, USB 3.1 Gen1		Upstream: 1x Type B, USB 3.1 Gen.1 Downstream: 1x Type C, USB 3.1 Gen.1 (DisplayPort Alt Mode, max. 15 W Power Delivery), 3x Type A, USB 3.1 Gen1			
LAN	-		-		RJ-45 max. 1 Gbps (Plug & Play from Win 8.1/macOS 10.12)		RJ-45 max. 1 Gbps (Plug & Play from Win 8.1/macOS 10.12)		-		RJ-45 max. 1 Gbps (Plug & Play from Win 8.1/macOS 10.12)			
Audio	Speakers: 2x 1 W (front) Inputs: USB-C, DisplayPort, 2x HDMI Downstream: 3.5 mm headphone jack		Speakers: 2x 1 W (front) Inputs: USB-C, DisplayPort, 2x HDMI Downstream: 3.5 mm headphone jack		Speakers: 2x 1 W (front) Inputs: USB-C, DisplayPort, HDMI Downstream: 3.5 mm headphone jack		Speakers: 2x 1 W (front) Inputs: USB-C, DisplayPort, HDMI Downstream: 3.5 mm headphone jack		Speakers: 2x 1 W (front) Inputs: USB-C, DisplayPort, HDMI Downstream: 3.5 mm stereo jack, 2x DisplayPort, HDMI Downstream: 3.5 mm headphone jack		Speakers: 2x 1 W (front) Inputs: USB-C, DisplayPort, HDMI Downstream: 3.5 mm stereo jack, 2x DisplayPort, HDMI Downstream: 3.5 mm headphone jack			
Power supply	Mains voltage: AC 100-240 V, 50/60 Hz Max. power consumption: 163 W (incl. USB-C Power Delivery) Typical power consumption: 33 W Standby/power switch is off: Max. 0.5 W/0 W Energy efficiency class: G Energy consumption/1000 h: 34 kWh		Mains voltage: AC 100-240 V, 50/60 Hz Max. power consumption: 163 W (incl. USB-C Power Delivery) Typical power consumption: 32 W Standby/power switch is off: Max. 0.5 W/0 W Energy efficiency class: G Energy consumption/1000 h: 28 kWh		Mains voltage: AC 100-240 V, 50/60 Hz Max. power consumption: 194 W (incl. USB-C Power Delivery) Typical power consumption: 28 W Standby/power switch is off: Max. 0.5 W/0 W Energy efficiency class: E Energy consumption/1000 h: 29 kWh		Mains voltage: AC 100-240 V, 50/60 Hz Max. power consumption: 164 W (incl. USB-C Power Delivery) Typical power consumption: 18 W Standby/power switch is off: Max. 0.5 W/0 W Energy efficiency class: D Energy consumption/1000 h: 16 kWh		Mains voltage: AC 100-240 V, 50/60 Hz Max. power consumption: 153 W (incl. USB-C Power Delivery) Typical power consumption: 18 W Standby/power switch is off: Max. 0.5 W/0 W Energy efficiency class: D Energy consumption/1000 h: 17 kWh		Mains voltage: AC 100-240 V, 50/60 Hz Max. power consumption: 67 W Typical power consumption: 16 W Standby/power switch is off: Max. 0.5 W/0 W Energy efficiency class: E Energy consumption/1000 h: 18 kWh			
Features and functions	Colour modes: Paper, Movie, sRGB, DICOM, User1, User2 Auto EcoView: \blacklozenge Look-up table: 14-bit Overdrive: \blacklozenge KVM Switch: \blacklozenge Picture-by-Picture/Picture-in-Picture: \blacklozenge Built-in power supply unit: \blacklozenge Detachable stand: \blacklozenge Plug & Play: \blacklozenge OSD languages: English, German, French, Italian, Japanese, Swedish, Spanish, Chinese		Colour modes: Paper, Movie, sRGB, DICOM, User1, User2 Auto EcoView: \blacklozenge Look-up table: 14-bit Overdrive: \blacklozenge KVM Switch: \blacklozenge Picture-by-Picture/Picture-in-Picture: \blacklozenge Built-in power supply unit: \blacklozenge Detachable stand: \blacklozenge Plug & Play: \blacklozenge OSD languages: English, German, French, Italian, Japanese, Swedish, Spanish, Chinese		Colour modes: Paper, Movie, sRGB, DICOM, User1, User2 Auto EcoView: \blacklozenge Look-up table: 14-bit Overdrive: \blacklozenge KVM Switch: \blacklozenge Picture-by-Picture/Picture-in-Picture: \blacklozenge Built-in power supply unit: \blacklozenge Detachable stand: \blacklozenge Plug & Play: \blacklozenge OSD languages: English, German, French, Italian, Japanese, Swedish, Spanish, Chinese		Colour modes: Paper, Movie, sRGB, DICOM, User1, User2 Auto EcoView: \blacklozenge Look-up table: 14-bit Overdrive: \blacklozenge KVM Switch: \blacklozenge Picture-by-Picture/Picture-in-Picture: \blacklozenge Built-in power supply unit: \blacklozenge Detachable stand: \blacklozenge Plug & Play: \blacklozenge OSD languages: English, German, French, Italian, Japanese, Swedish, Spanish, Chinese		Colour modes: Paper, Movie, sRGB, DICOM, User1, User2 Auto EcoView: \blacklozenge Look-up table: 14-bit Overdrive: \blacklozenge KVM Switch: \blacklozenge Picture-by-Picture/Picture-in-Picture: \blacklozenge Built-in power supply unit: \blacklozenge Detachable stand: \blacklozenge Plug & Play: \blacklozenge OSD languages: English, German, French, Italian, Japanese, Swedish, Spanish, Chinese		Colour modes: Paper, Movie, sRGB, DICOM, User1, User2 Auto EcoView: \blacklozenge Look-up table: 14-bit Overdrive: \blacklozenge KVM Switch: \blacklozenge Picture-by-Picture/Picture-in-Picture: \blacklozenge Built-in power supply unit: \blacklozenge Detachable stand: \blacklozenge Plug & Play: \blacklozenge OSD languages: English, German, French, Italian, Japanese, Swedish, Spanish, Chinese			
Settings	Adjustable via on-screen display: Brightness, contrast, gamma, Auto EcoView, EcoView Optimiser, colour mode, colour temperature, saturation, hue, Overdrive, scaling options, volume, audio source		Adjustable via on-screen display: Brightness, contrast, gamma, Auto EcoView, EcoView Optimiser, colour mode, colour temperature, saturation, hue, Overdrive, scaling options, volume, audio source		Adjustable via on-screen display: Brightness, contrast, gamma, Auto EcoView, EcoView Optimiser, colour mode, colour temperature, saturation, hue, Overdrive, scaling options, volume, audio source		Adjustable via on-screen display: Brightness, contrast, gamma, Auto EcoView, EcoView Optimiser, colour mode, colour temperature, saturation, hue, Overdrive, scaling options, volume		Adjustable via on-screen display: Brightness, contrast, gamma, Auto EcoView, EcoView Optimiser, colour mode, colour temperature, saturation, hue, Overdrive, scaling options, volume, audio source		Adjustable via on-screen display: Brightness, contrast, gamma, Auto EcoView, EcoView Optimiser, colour mode, colour temperature, saturation, hue, Overdrive, scaling options, volume			
Dimensions and weight	Dimensions (W x H x D): 717.4 × 427.3-576.2 × 230 mm Dimensions without stand (W x H x D): 717.4 × 416.3 × 51.5 mm Weight with/without stand: 11 kg/7.6 kg Height adjustment: 148.9 mm Tilt: 35° backward, 5° forward Swivel: 344° Pivot: -		Dimensions (W x H x D): 611.4 × (367.3-545.2) × 230 mm Dimensions without stand (W x H x D): 611.4 × 356.3 × 50 mm Weight with/without stand: 8.2 kg/4.9 kg Height adjustment: 177.9 mm Tilt: 35° backward, 5° forward Swivel: 344° Pivot: 90° (clockwise)		Dimensions (W x H x D): 893.9 × (411-603.7) × 240 mm Dimensions without stand (W x H x D): 893.9 × 398.2 × 109.8 mm Weight with/without stand: 13.2 kg/9.5 kg Height adjustment: 192.7 mm Tilt: 35° backward, 5° forward Swivel: 70° Pivot: -		Dimensions (W x H x D): 611.4 × (368.6-545.2) × 230 mm Dimensions without stand (W x H x D): 611.4 × 356.6 × 56 mm Weight with/without stand: 8.5 kg/5.7 kg Height adjustment: 176.6 mm Tilt: 35° backward, 5° forward Swivel: 344° Pivot: 90° (clockwise and anti-clockwise)		Dimensions (W x H x D): 611.4 × (368.6-545.2) × 230 mm Dimensions without stand (W x H x D): 611.4 × 356.6 × 56 mm Weight with/without stand: 8.5 kg/5.7 kg Height adjustment: 176.6 mm Tilt: 35° backward, 5° forward Swivel: 344° Pivot: 90° (clockwise and anti-clockwise)		Dimensions (W x H x D): 611.7 × (376.3-545.3) × 230 mm Dimensions without stand (W x H x D): 611.7 × 364.4 × 53.7 mm Weight with/without stand: 8.5 kg/5.7 kg Height adjustment: 169 mm Tilt: 35° backward, 5° forward Swivel: 344° Pivot: 90° (clockwise and anti-clockwise)		Dimensions (W x H x D): 531 × (356.2-538.4) × 230 mm Dimensions without stand (W x H x D): 531 × 344.2 × 53.7 mm Weight with/without stand: 7.6 kg/4.9 kg Height adjustment: 182.2 mm Tilt: 35° backward, 5° forward Swivel: 344° Pivot: 90° (clockwise and anti-clockwise)	
Certifications and standards	CE, UKCA, CB, TCO Certified Generation 8, EPA ENERGY STAR, TÜV/GS, TÜV certified ergonomics (including ISO 9241-307*), TÜV/Blue Low Light Content, TÜV/Flicker Free, EPEAT 2018 (US), cTÜVus, TÜV/S, EAC, PSE, FCC-B, CAN ICES-3(B), RCM, VCCI-B, CCC, RoHS, China RoHS, WEEE		CE, UKCA, CB, TCO Certified Generation 8, EPA ENERGY STAR, TÜV/GS, TÜV certified ergonomics (including ISO 9241-307*), TÜV/Blue Low Light Content, TÜV/Flicker Free, EPEAT 2018 (US), cTÜVus, TÜV/S, EAC, PSE, FCC-B, CAN ICES-3(B), RCM, VCCI-B, CCC, RoHS, China RoHS, WEEE		CE, UKCA, CB, TCO Certified Generation 9, EPA ENERGY STAR, TÜV/GS, TÜV certified ergonomics (including ISO 9241-307*), TÜV/Blue Low Light Content, TÜV/Flicker Free, EPEAT 2018 (US), cTÜVus, TÜV/S, EAC, PSE, FCC-B, CAN ICES-3(B), RCM, VCCI-B, CCC, RoHS, China RoHS, WEEE		CE, UKCA, CB, TCO Certified Generation 9, EPA ENERGY STAR, TÜV/GS, TÜV certified ergonomics (including ISO 9241-307*), TÜV/Blue Low Light Content, TÜV/Flicker Free, EPEAT 2018 (US), cTÜVus, TÜV/S, EAC, PSE, FCC-B, CAN ICES-3(B), RCM, VCCI-B, CCC, RoHS, China RoHS, WEEE		CE, UKCA, CB, TCO Certified Generation 9, EPA ENERGY STAR, TÜV/GS, TÜV certified ergonomics (including ISO 9241-307*), TÜV/Blue Low Light Content, TÜV/Flicker Free, EPEAT 2018 (US), cTÜVus, TÜV/S, EAC, PSE, FCC-B, CAN ICES-3(B), RCM, VCCI-B, CCC, RoHS, China RoHS, WEEE		CE, UKCA, CB, TCO Certified Generation 9, EPA ENERGY STAR, TÜV/GS, TÜV certified ergonomics (including ISO 9241-307*), TÜV/Blue Low Light Content, TÜV/Flicker Free, EPEAT 2018 (US), cTÜVus, TÜV/S, EAC, PSE, FCC-B, CAN ICES-3(B), RCM, VCCI-B, CCC, RoHS, China RoHS, WEEE		CE, UKCA, CB, TCO Certified Generation 9, EPA ENERGY STAR, TÜV/GS, TÜV certified ergonomics (including ISO 9241-307*), TÜV/Blue Low Light Content, TÜV/Flicker Free, EPEAT 2018 (US), cTÜVus, TÜV/S, EAC, PSE, FCC-B, CAN ICES-3(B), RCM, VCCI-B, CCC, RoHS, China RoHS, WEEE	
Accessories	Power cable, signal cable (USB-C to USB-C), DisplayPort to DisplayPort, HDMI to HDMI), cable cover, Set-up Guide		Power cable, signal cable (USB-C to USB-C), DisplayPort to DisplayPort, HDMI to HDMI), cable cover, Set-up Guide		Power cable, signal cable (USB-C to USB-C), DisplayPort to DisplayPort, HDMI to HDMI), 2 USB-A to USB-B cables, Set-up Guide		Power cable, signal cable (USB-C to USB-C), Set-up Guide		Power cable, signal cable (DisplayPort to DisplayPort), USB cable, Set-up Guide		Power cable, signal cable (USB-C to USB-C), Set-up Guide			
Downloads	User's manual, EIZO Screen InStyle software for Windows		User's manual, EIZO Screen InStyle software for Windows		User's manual, EIZO Screen InStyle software for Windows		User's manual, EIZO Screen InStyle software for Windows		User's manual, EIZO Screen InStyle software for Windows		User's manual, EIZO Screen InStyle software for Windows			
Warranty	Five-years** incl. on-site replacement service		Five-years** incl. on-site replacement service		Five-years** incl. on-site replacement service		Five-years** incl. on-site replacement service		Five-years** incl. on-site replacement service		Five-years** incl. on-site replacement service			

*Zero bright pixel warranty for fully illuminated sub-pixels (partial image elements ISO 9241-307). Valid: six months from the date of purchase.
 **Maximum of 30,000 hours of monitor usage time.



EV2490



EV2480



EV2460



EV2451



EV2360



EV2430



S2133



S1934

	Ultra-Slim-Monitore					Slim-Monitore			
	EV2490	EV2480	EV2460	EV2451	EV2360	EV2430	S2133	S1934	
Type	IPS	IPS	IPS	IPS	IPS	IPS	IPS	IPS	
Screen size	23.8"/60.5 cm	23.8"/60.5 cm	23.8"/60.5 cm	23.8"/60.4 cm	22.5"/57.2 cm	24.1"/61.1 cm	21.3"/54 cm	19"/48 cm	
Native resolution	1920 × 1080 (aspect ratio 16:9)	1920 × 1080 (aspect ratio 16:9)	1920 × 1080 (aspect ratio 16:9)	1920 × 1080 (aspect ratio 16:9)	1920 × 1200 (aspect ratio 16:10)	1920 × 1200 (aspect ratio 16:10)	1600 × 1200 (aspect ratio 4:3)	1280 × 1024 (aspect ratio 5:4)	
Display size (H x V)	527 × 296.5 mm	527 × 296.5 mm	527 × 296.5 mm	527 × 296.5 mm	488.2 × 297.2 mm	518.4 × 324 mm	432 × 324 mm	374.8 × 299.8 mm	
Pixel pitch/pixel density	0.275 × 0.275 mm/93 ppi	0.275 × 0.275 mm/93 ppi	0.275 × 0.275 mm/93 ppi	0.275 × 0.275 mm/93 ppi	0.254 × 0.248 mm/101 ppi	0.270 × 0.270 mm/94 ppi	0.270 × 0.270 mm/94 ppi	0.293 × 0.293 mm/87 ppi	
Display colours	16.77 million	16.77 million	16.77 million	16.77 million	16.77 million	16.77 million	16.77 million	16.77 million	
Viewing angle (H/V, typical)	178°, 178°	178°, 178°	178°, 178°	178°, 178°	178°, 178°	178°, 178°	178°, 178°	178°, 178°	
Brightness (typical)	250 cd/m²	250 cd/m²	250 cd/m²	250 cd/m²	250 cd/m²	300 cd/m²	420 cd/m²	250 cd/m²	
Contrast ratio (typical)	1000:1	1000:1	1000:1	1000:1	1000:1	1000:1	1500:1	1000:1	
Response time (typical)	5 ms (Grey-Grey)	5 ms (Grey-Grey)	5 ms (Grey-Grey)	5 ms (Grey-Grey)	5 ms (Grey-Grey)	14 ms (Grey-Grey)	6 ms (Grey-Grey)	14 ms (Grey-Grey)	
Available housing colours	Black (EV2490-BK), White (EV2490-WT)	Black (EV2480-BK), White (EV2480-WT)	Black (EV2460-BK), White (EV2460-WT)	Black (EV2451-BK), White (EV2451-WT)	Black (EV2360-BK), White (EV2360-WT)	Black (EV2430-BK), Light Grey (EV2430-GY)	Black (S2133-BK), Light Grey (S2133-GY)	Black (S1934-BK), Light Grey (S1934-GY)	
Inputs	1x USB-C (with HDCP 1.3), 1x DisplayPort (with HDCP 1.3), 1x HDMI (with HDCP 1.4)	1x USB-C (with HDCP 1.3), 1x DisplayPort (with HDCP 1.3), 1x HDMI (with HDCP 1.4)	1x DisplayPort (with HDCP 1.3), 1x HDMI (with HDCP 1.4), 1x DVI-D (with HDCP 1.4), 1x D-Sub, 15 pin	1x DisplayPort (with HDCP 1.3), 1x HDMI (with HDCP 1.4), 1x DVI-D (with HDCP 1.4), 1x D-Sub, 15 pin	1x DisplayPort (with HDCP 1.3), 1x HDMI (with HDCP 1.4), 1x DVI-D (with HDCP 1.4), 1x D-Sub, 15 pin	1x DisplayPort (with HDCP 1.3), 1x DVI-D (with HDCP 1.4), 1x D-Sub, 15 pin	1x DisplayPort (with HDCP 1.3), 1x DVI-D (with HDCP 1.4), 1x D-Sub, 15 pin	1x DisplayPort (with HDCP 1.3), 1x DVI-D (with HDCP 1.4), 1x D-Sub, 15 pin	
Outputs	USB-C Daisy Chain	USB-C Daisy Chain	USB-C Daisy Chain	USB-C Daisy Chain	USB-C Daisy Chain	USB-C Daisy Chain	USB-C Daisy Chain	USB-C Daisy Chain	
Digital (H, V)	USB-C: 31–68 kHz, 59–61 Hz, DisplayPort: 31–68 kHz, 59–61 Hz, HDMI: 31–68 kHz, 49–51 Hz, 59–61 Hz	USB-C: 31–68 kHz, 59–61 Hz, DisplayPort: 31–68 kHz, 59–61 Hz, HDMI: 31–68 kHz, 49–51 Hz, 59–61 Hz	DisplayPort: 31–68 kHz, 59–61 Hz, HDMI: 15–68 kHz, 49–51 Hz, 59–61 Hz, DVI-D: 31–68 kHz, 59–61 Hz	DisplayPort: 31–68 kHz, 59–61 Hz, HDMI: 15–68 kHz, 49–51 Hz, 59–61 Hz, DVI-D: 31–68 kHz, 59–61 Hz	DisplayPort: 31–75.5 kHz, 59–61 Hz, HDMI: 31–75.5 kHz, 49–51 Hz, 59–61 Hz	DisplayPort: 31–76 kHz, 59–61 Hz, DVI-D: 31–76 kHz, 59–61 Hz	DisplayPort: 31–76 kHz, 59–61 Hz, DVI-D: 31–76 kHz, 59–61 Hz	DisplayPort: 31–64 kHz, 59–61 Hz, DVI-D: 31–64 kHz, 59–61 Hz	
Analogue (H, V)	–	–	D-Sub: 31–68 kHz, 59–61 Hz	D-Sub: 31–81 kHz, 55–76 Hz	D-Sub: 31–75.5 kHz, 59–61 Hz	D-Sub: 31–76 kHz, 55–61 Hz	D-Sub: 24–80 kHz, 49–76 Hz	D-Sub: 31–64 kHz, 55–61 Hz	
Sync formats	–	–	Separate	Separate	Separate	Separate	Separate, composite	Separate	
Upstream	1x Type C, USB 3.1 Gen.1 (DisplayPort Alt Mode, network, max. 70 W Power Delivery) 1x Type B, USB 3.1 Gen.1	1x Type C, USB 3.1 Gen.1 (DisplayPort Alt Mode, max. 70 W Power Delivery)	1x Type B, USB 3.1 Gen.1	1x Type B, USB 3.1 Gen.1	1x Type B, USB 3.1 Gen.1	1x Type B, USB 2.0	1x Type B, USB 2.0	–	
Downstream	1x Type C, USB 3.1 Gen.1 (DisplayPort Alt Mode, max. 15 W Power Delivery) 3x Type A, USB 3.1 Gen.1	4x Type A, USB 3.1 Gen.1	4x Type A, USB 3.1 Gen.1	2x Type A, USB 3.1 Gen.1	2x Type A, USB 3.1 Gen.1	2x Type A, USB 2.0	2x Type A, USB 2.0	–	
Network connection	RJ-45 Max. 1 Gbps (Plug & Play from Win 8.1/macOS 10.12)	–	–	–	–	–	–	–	
Speakers	2x 1 W (front)	2x 1 W (front)	2x 1 W (front)	2x 1 W	2x 1 W (front)	2x 1 W	–	2x 0.5 W	
Inputs	USB-C, DisplayPort, HDMI	USB-C, DisplayPort, HDMI	3.5-mm stereo jack, DisplayPort, HDMI	3.5-mm stereo jack, DisplayPort, HDMI	3.5-mm stereo jack, DisplayPort, HDMI	3.5-mm stereo jack, DisplayPort	–	3.5-mm stereo jack, DisplayPort	
Downstream	3.5 mm headphone jack	3.5 mm headphone jack	3.5 mm headphone jack	3.5 mm headphone jack	3.5 mm headphone jack	3.5 mm headphone jack	–	3.5 mm headphone jack	
Mains voltage	AC 100–240 V, 50/60 Hz	AC 100–240 V, 50/60 Hz	AC 100–240 V, 50/60 Hz	AC 100–240 V, 50/60 Hz	AC 100–240 V, 50/60 Hz	AC 100–240 V, 50/60 Hz	AC 100–120 V/200–240 V, 50/60 Hz	AC 100–240 V, 50/60 Hz	
Max. power consumption	155 W (incl. USB-C Power Delivery)	142 W (incl. USB-C Power Delivery)	50 W	42 W	37 W	36 W	45 W	21 W	
Typical power consumption	11 W	11 W	10 W	13 W	11 W	12 W	13 W	9 W	
Standby/power switch is off	Max. 0.5 W/0 W	Max. 0.5 W/0 W	Max. 0.5 W/0 W	Max. 0.5 W/0 W	Max. 0.5 W/0 W	Max. 0.3 W/0 W	Max. 0.3 W	Max. 0.5 W	
Energy efficiency class	C	C	B	D	C	E	E	C	
Energy consumption/1000 h	9 kWh	12 kWh	9 kWh	13 kWh	11 kWh	15 kWh	17 kWh	9 kWh	
Colour modes	Paper, Movie, sRGB, DICOM, User1, User2	Paper, Movie, sRGB, DICOM, User1, User2	Paper, Movie, sRGB, DICOM, User1, User2	Paper, Movie, sRGB, DICOM, User1, User2	Paper, Movie, sRGB, DICOM, User1, User2	Paper, Movie, sRGB, User1, User2	Paper, Movie, sRGB, DICOM, User	Paper, Movie, sRGB, DICOM, User1, User2	
Auto EcoView	◆	◆	◆	◆	◆	◆	◆	◆	
EcoView Sense	–	–	–	–	–	–	–	–	
Look-up table	10-bit	10-bit	10-bit	10-bit	10-bit	10-bit	10-bit	10-bit	
Overdrive	◆	◆	◆	◆	◆	◆	◆	◆	
KVM Switch	◆	–	–	–	–	–	–	–	
Picture-by-Picture/ Picture-in-Picture	–/–	–/–	–/–	–/–	–/–	–/–	–/–	–/–	
Built-in power supply unit	◆	◆	◆	◆	◆	◆	◆	◆	
Detachable stand	◆	◆	◆	◆	◆	◆	◆	◆	
Plug & Play	◆	◆	◆	◆	◆	◆	◆	◆	
OSD languages	English, German, French, Italian, Japanese, Swedish, Spanish, Chinese	English, German, French, Italian, Japanese, Swedish, Spanish, Chinese	English, German, French, Italian, Japanese, Swedish, Spanish, Chinese	English, German, French, Italian, Japanese, Swedish, Spanish, Chinese	English, German, French, Italian, Japanese, Swedish, Spanish, Chinese	English, German, French, Italian, Japanese, Swedish, Spanish, Chinese	English, German, French, Italian, Japanese, Swedish, Spanish, Chinese	English, German, French, Italian, Japanese, Swedish, Spanish, Chinese	
Adjustable via on-screen display	Brightness, contrast, gamma, Auto EcoView, EcoView Optimiser, colour mode, colour temperature, saturation, hue, Overdrive, scaling options, volume	Brightness, contrast, gamma, Auto EcoView, EcoView Optimiser, colour mode, colour temperature, saturation, hue, Overdrive, scaling options, volume	Brightness, contrast, gamma, Auto EcoView, EcoView Optimiser, colour mode, colour temperature, saturation, hue, Overdrive, scaling options, volume, audio source	Brightness, contrast, gamma, Auto EcoView, EcoView Optimiser, colour mode, colour temperature, saturation, hue, Overdrive, scaling options, volume, audio source	Brightness, contrast, gamma, Auto EcoView, EcoView Optimiser, colour mode, colour temperature, saturation, hue, Overdrive, scaling options, volume, audio source	Brightness, contrast, gamma, Auto EcoView, EcoView Optimiser, EcoView Sense, colour mode, colour temperature, saturation, hue, scaling options, volume, audio source	Brightness, contrast, gamma, Auto EcoView, colour mode, colour temperature, saturation, hue, Overdrive, scaling options	Brightness, contrast, gamma, Auto EcoView, colour mode, colour temperature, saturation, hue, volume, audio source	
Dimensions (W x H x D)	537.8 × (332.4–523.6) × 230 mm	537.8 × (332.4–523.6) × 230 mm	537.8 × (333.6–473.6) × 233 mm	537.7 × (322.7–495.4) × 190 mm	499 × (334.9–473.9) × 233 mm	552.5 × (368–499) × 233 mm	465 × (453–535) × 208.5 mm	405 × (406.5–506.5) × 205 mm	
Dimensions without stand (W x H x D)	537.8 × 320.4 × 57.4 mm	537.8 × 320.4 × 57.4 mm	537.8 × 320.4 × 53.6 mm	537.7 × 313.1 × 45.5 mm	499 × 321.3 × 53.6 mm	552.5 × 358 × 56.9 mm	465 × 361 × 64 mm	405 × 334 × 61.5 mm	
Weight with/without stand	7.2 kg/4.5 kg	7.4 kg/4.7 kg	5.9 kg/3.8 kg	5.5 kg/3.5 kg	5.5 kg/3.4 kg	6.7 kg/4.3 kg	8.6 kg/5.6 kg	5.6 kg/3.8 kg	
Height adjustment	191.2 mm	191.2 mm	140 mm	172.7 mm	140 mm	131 mm	82 mm	100 mm	
Tilt	35° backward, 5° forward	35° backward, 5° forward	35° backward, 5° forward	35° backward, 5° forward	35° backward, 5° forward	35° backward, 5° forward	40° backward	30° backward	
Swivel	344°	344°	344°	344°	344°	344°	70°	70°	
Pivot	90° (clockwise and anti-clockwise)	90° (clockwise and anti-clockwise)	90° (clockwise and anti-clockwise)	90° (clockwise and anti-clockwise)	90° (clockwise and anti-clockwise)	90° (clockwise)	90° (clockwise)	90° (clockwise)	
VESA mounting support	100 × 100 mm	100 × 100 mm	100 × 100 mm	100 × 100 mm	100 × 100 mm	100 × 100 mm	100 × 100 mm	100 × 100 mm	
Certifications and standards	CE, UKCA, CB, TCO Certified Generation 9, EPA ENERGY STAR, TÜV/GS, TÜV certified ergonomics (including ISO 9241-307*), TÜV/Blue Low Light Content, TÜV/Flicker Free, EPEAT 2018 (US), cTÜVus, TÜV/S, EAC, PSE, FCC-B, CAN ICES-3(B), RCM, VCCI-B, CCC, RoHS, China RoHS, WEEE	CE, UKCA, CB, TCO Certified Generation 9, EPA ENERGY STAR, TÜV/GS, TÜV certified ergonomics (including ISO 9241-307*), TÜV/Blue Low Light Content, TÜV/Flicker Free, EPEAT 2018 (US), cTÜVus, TÜV/S, EAC, PSE, FCC-B, CAN ICES-3(B), RCM, VCCI-B, CCC, RoHS, China RoHS, WEEE	CE, UKCA, CB, TCO Certified Generation 9, EPA ENERGY STAR, TÜV/GS, TÜV certified ergonomics (including ISO 9241-307*), TÜV/Blue Low Light Content, TÜV/Flicker Free, EPEAT 2018 (US), cTÜVus, TÜV/S, EAC, PSE, FCC-B, CAN ICES-3(B), RCM, VCCI-B, CCC, RoHS, China RoHS, WEEE	CE, UKCA, CB, TCO Certified Generation 8, EPA ENERGY STAR, TÜV/GS, TÜV certified ergonomics (including ISO 9241-307*), TÜV/Blue Low Light Content, TÜV/Flicker Free, EPEAT 2018 (US), cTÜVus, TÜV/S, EAC, PSE, FCC-B, CAN ICES-3(B), RCM, VCCI-B, CCC, RoHS, China RoHS, WEEE	CE, UKCA, CB, TCO Certified Generation 9, EPA ENERGY STAR, TÜV/GS, TÜV certified ergonomics (including ISO 9241-307*), TÜV/Blue Low Light Content, TÜV/Flicker Free, EPEAT 2018 (US), cTÜVus, TÜV/S, EAC, PSE, FCC-B, CAN ICES-3(B), RCM, VCCI-B, CCC, RoHS, China RoHS, WEEE	CE, UKCA, CB, TCO Certified Generation 8, EPA ENERGY STAR, TÜV/GS, TÜV certified ergonomics (including ISO 9241-307*), TÜV/Blue Low Light Content, TÜV/Flicker Free, EPEAT 2018 (US), cTÜVus, TÜV/S, EAC, PSE, FCC-B, CAN ICES-3(B), RCM, VCCI-B, CCC, RoHS, China RoHS, WEEE	CE, UKCA, CB, TCO Certified Generation 8, EPA ENERGY STAR, TÜV/GS, TÜV certified ergonomics (including ISO 9241-307*), TÜV/Blue Low Light Content, TÜV/Flicker Free, EPEAT 2018 (US), cTÜVus, TÜV/S, EAC, PSE, FCC-B, CAN ICES-3(B), RCM, VCCI-B, CCC, RoHS, China RoHS, WEEE	CE, UKCA, CB, EPA ENERGY STAR, TÜV/GS, TÜV certified ergonomics (including ISO 9241-307*), cTÜVus, TÜV/S, EAC, FCC-B, CAN ICES-3(B), RCM, VCCI-B, CCC, RoHS, China RoHS, WEEE	CE, UKCA, CB, TCO Certified Generation 8, EPA ENERGY STAR, TÜV/GS, TÜV certified ergonomics (including ISO 9241-307*), cTÜVus, TÜV/S, EAC, PSE, FCC-B, CAN ICES-3(B), RCM, VCCI-B, CCC, RoHS, China RoHS, WEEE
Accessories included	Power cable, signal cable (USB-C to USB-C), Set-up Guide	Power cable, signal cable (USB-C to USB-C), Set-up Guide	Power cable, signal cable (DisplayPort to DisplayPort), USB cable, Set-up Guide	Power cable, signal cable (DisplayPort to DisplayPort), USB cable, cable holder, Set-up Guide	Power cable, signal cable (DisplayPort to DisplayPort), USB cable, Set-up Guide	Power cable, signal cable (DisplayPort to DisplayPort, DVI-D to DVI-D), Set-up Guide	Power cord, signal cable (DVI-D to DVI-D, D-Sub to D-Sub), USB cable, Set-up Guide	Power cord, signal cable (DVI-D to DVI-D, D-Sub to D-Sub), audio cable, Set-up Guide	
Downloads	User's manual, EIZO Screen InStyle software for Windows	User's manual, EIZO Screen InStyle software for Windows	User's manual, EIZO Screen InStyle software for Windows	User's manual, EIZO Screen InStyle software for Windows	User's manual, EIZO Screen InStyle software for Windows	User's manual	User's manual	User's manual	
Warranty	Five year** incl. on-site replacement service	Five year** incl. on-site replacement service	Five-years** incl. on-site replacement service	Five-years** incl. on-site replacement service	Five-years** incl. on-site replacement service	Five-years** incl. on-site replacement service	Five-years** incl. on-site replacement service	Five-years** incl. on-site replacement service	

*Zero bright pixel warranty for fully illuminated sub-pixels (partial image elements ISO 9241-307). Valid: six months from the date of purchase.
 ** Maximum of 30,000 hours of monitor usage time.

Working with the Best.

Well-known companies around the world
rely on EIZO's FlexScan monitors.



Hauck & Aufhäuser Deutschland
Product used: FlexScan EV2460

To make it as easy as possible for employees to switch between the bank and home office, Hauck & Aufhäuser's IT department uses the same hardware setup for both workplaces: laptop, keyboard, mouse, headset, docking station and up to two FlexScan EV2460 monitors.

Especially when several applications are displayed simultaneously, the additional 24-inch monitor next to the laptop makes work much easier. For example, when working with Excel spreadsheets or comparing several documents.

NEW AG Germany

Product used: FlexScan EV2795

In order to enable its employees to work on the move, regardless of location, the municipal services company NEW is equipping its new "Modern Workplaces" with the EIZO FlexScan EV2795 model, which can also be used as a docking and charging station thanks to its USB-C port. All workplaces are to be equipped accordingly by 2022. More than 1800 EV2795 monitors will then be in use.



Our entire range.

EIZO offers monitors for a wide variety of industries and application areas. Our FlexScan monitors are particularly suited for office use, while other work areas require quite different specialisations.



ColorEdge

The EIZO ColorEdge series was developed specifically to meet the high requirements of creative users who work with photos, films and graphics.

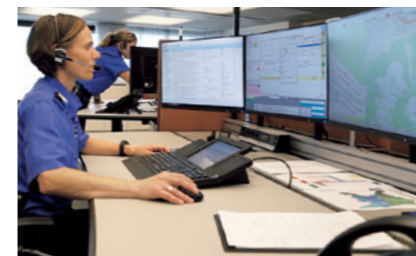
ColorEdge monitors are the specialists when it comes to colours, calibration and precision. They guarantee an unadulterated look at the files and make it possible to work with total colour accuracy.



CuratOR and RadiForce

CuratOR from EIZO offers complete medical solutions for modern operating theatres. RadiForce series of medical monitors meet the high

requirements demanded by the fields of diagnostics and medical review.



DuraVision

The professional DuraVision monitors and solutions are best-suited to 24-hour operation and are used

in maritime and industrial environments, as well as security and monitoring systems.



Raptor and Re/Vue

EIZO offers the most comprehensive range of monitors, recording and streaming solutions, graphics boards for air traffic control centres and towers, as well as training and simulation equipment for air traffic

controllers. The numerous configuration options meet the requirements for any installation.

EIZO, the EIZO logo, FlexScan, ColorEdge, CuratOR, RadiForce, DuraVision, Raptor, and ScreenManager are registered trademarks of EIZO Corporation. EIZO ScreenSlicer, Re/Vue, SafeGuard and Screen InStyle are trademarks of EIZO Corporation. The terms HDMI and HDMI High-Definition Multimedia Interface, and the HDMI Logo are trademarks or registered trademarks of HDMI Licensing, LLC in the United States and other countries. VESA is a registered trademark of Video Electronics Standards Association. Windows, Microsoft are registered trademarks of Microsoft Corporation in the United States and other countries. DICOM is the registered trademark of the National Electrical Manufacturers Association for its standards publications relating to digital communications of medical information. USB Type-C is a registered trademark of USB Implementers Forum, Inc. macOS Sierra is a registered trademark of Apple Inc. ENERGY STAR is a registered trademark of the United States Environmental Protection Agency in the United States and other countries. All other company names, product names, and logos are trademarks or registered trademarks of their respective owners.

Find your local sales partners or EIZO contact persons: [eizo.eu/contact](https://www.eizo.eu/contact)

Copyright © 2022 EIZO Europe GmbH, Belgrader Str. 2, 41069 Mönchengladbach, Germany.
All rights, errors and modifications are subject to change. Last updated: October 2022

