



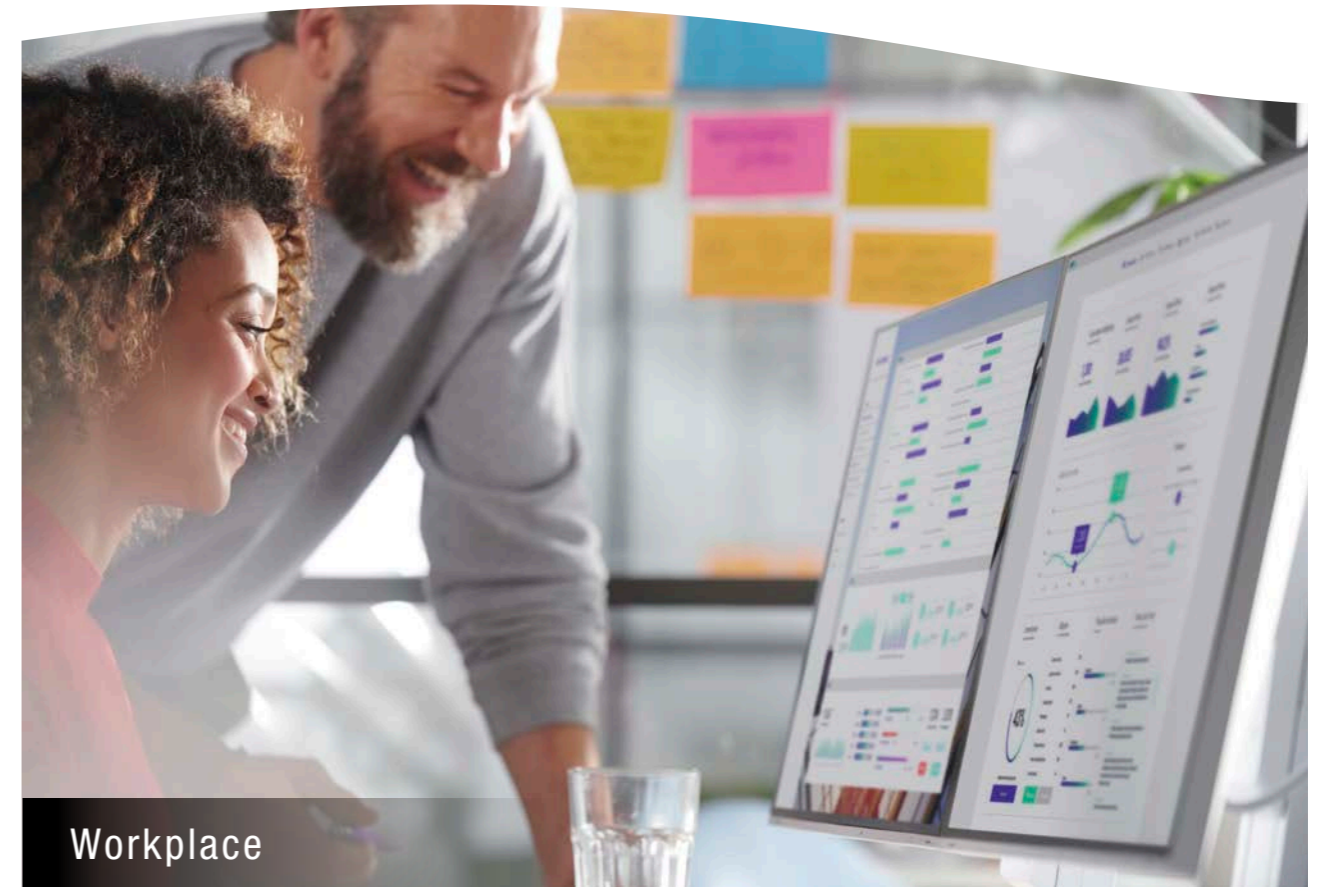
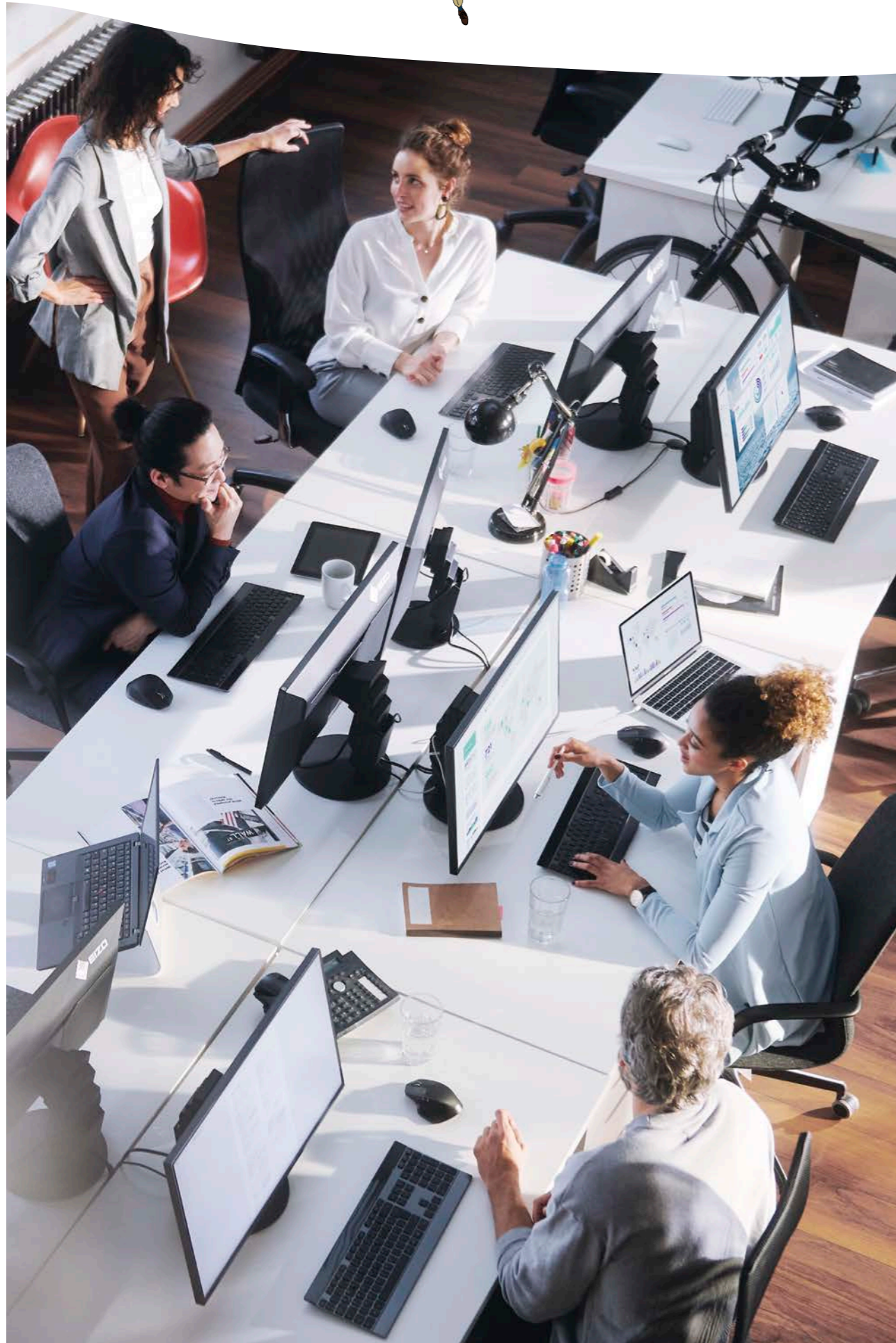
FlexScan[®]
Business Monitor Solutions

CHOOSE EIZO





CHOOSE EIZO WORK BETTER
















Workplace



Home Office

The FlexScan Solution for a Better Working Experience

		Premium				New Standard					Basic			
		<ul style="list-style-type: none"> I need a stable network connection for web meetings <i>See page 7</i> 												
		<ul style="list-style-type: none"> I need to use multiple monitors with less cable clutter <i>See page 7</i> 												
		<ul style="list-style-type: none"> Having my battery always fully charged allows me to focus on work <i>See page 6</i> 									I'm using a desktop PC and need a good monitor			
		<ul style="list-style-type: none"> I prefer to work with an external mouse and keyboard when using my laptop <i>See page 6</i> 												
		Eye care and ergonomics are important to me <i>See pages 10 - 12</i>												
		I want to brighten the office to improve the ambience <i>See pages 8 - 9</i>												
Inputs	USB Type-C	✓	✓	✓	✓	✓	✓	✓	✓	✓				
	• Network Connection	✓	✓	✓	✓									
	• Daisy Chain		✓	✓	✓									
	• Power Delivery	✓	✓	✓	✓	✓	✓	✓	✓	✓				
	• Connect Peripherals	✓	✓	✓	✓	✓	✓	✓	✓	✓				
	DisplayPort	✓	✓	✓	✓	✓	✓	✓	✓	✓	✓	✓	✓	✓
	HDMI	✓	✓	✓	✓	✓	✓	✓	✓	✓	✓	✓	✓	✓
	DVI-D										✓	✓	✓	
	D-Sub mini 15 pin											✓	✓	✓
Eye Care Functions		✓	✓	✓	✓	✓	✓	✓	✓	✓	✓	✓	✓	✓
Color / Frameless		<input type="checkbox"/> White <input checked="" type="checkbox"/> Black	<input type="checkbox"/> White <input checked="" type="checkbox"/> Black	<input type="checkbox"/> White <input checked="" type="checkbox"/> Black	<input type="checkbox"/> White <input checked="" type="checkbox"/> Black	<input type="checkbox"/> White <input checked="" type="checkbox"/> Black	<input type="checkbox"/> White <input checked="" type="checkbox"/> Black	<input type="checkbox"/> White <input checked="" type="checkbox"/> Black	<input type="checkbox"/> White <input checked="" type="checkbox"/> Black	<input type="checkbox"/> White <input checked="" type="checkbox"/> Black	<input type="checkbox"/> White <input checked="" type="checkbox"/> Black	<input type="checkbox"/> White <input checked="" type="checkbox"/> Black	<input type="checkbox"/> White <input checked="" type="checkbox"/> Black	<input type="checkbox"/> White <input checked="" type="checkbox"/> Black
USB Ports		4	4	4	4	2	2	4	4	4	4	2	4	2
Panel Size		37.5"	27"	24.1"	23.8"	31.5"	27"	27"	24.1"	23.8"	27"	24.1"	23.8"	22.5"
Native Resolution		UWQHD+ 3840×1600	WQHD 2560×1440	WUXGA 1920×1200	Full HD 1920×1080	4K 3840×2160	4K 3840×2160	WQHD 2560×1440	WUXGA 1920×1200	Full HD 1920×1080	WQHD 2560×1440	WUXGA 1920×1200	Full HD 1920×1080	WUXGA 1920×1200
														
		EV3895	EV2795	EV2495	NEW EV2490	EV3285	EV2785	NEW EV2781	NEW EV2485	EV2480	EV2760	EV2456	EV2460	EV2360

See pages 18 - 21 for a detailed list and specifications of the complete FlexScan lineup, including square and wide monitors.

Streamlined Connection with USB Type-C



Network Connection

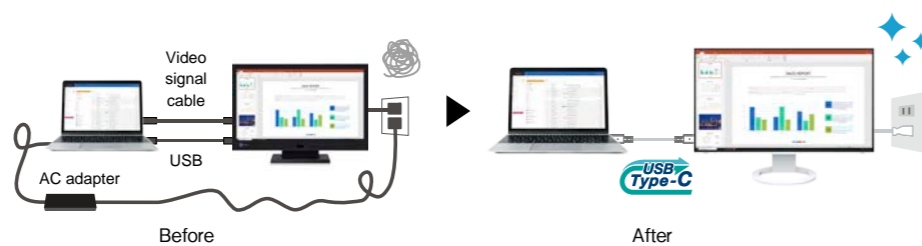
While many modern laptops are not equipped with a dedicated LAN port, a USB Type-C compatible monitor with a built-in LAN adapter provides users with access to the network via the monitor. This allows users to conduct conference calls or data transfers reliably and at high speed.

Compatible Models EV3895 / EV2795 / EV2495 / EV2490



A Better Working Experience

USB Type-C® compatible monitors make it faster and easier to connect a laptop when moving between workstations, or when working away from the office.



Power Delivery

Power delivery via USB Type-C reliably charges laptops and small desktop PCs. This eliminates the need for a laptop's bulky power supply unit, freeing up desk space.





Connect Peripherals

Laptops often have limited connectivity options for peripherals. Connecting to a USB Type-C compatible monitor gives access to a hub with multiple USB Type-A ports for easily connecting an external keyboard, mouse, web camera, or storage device.



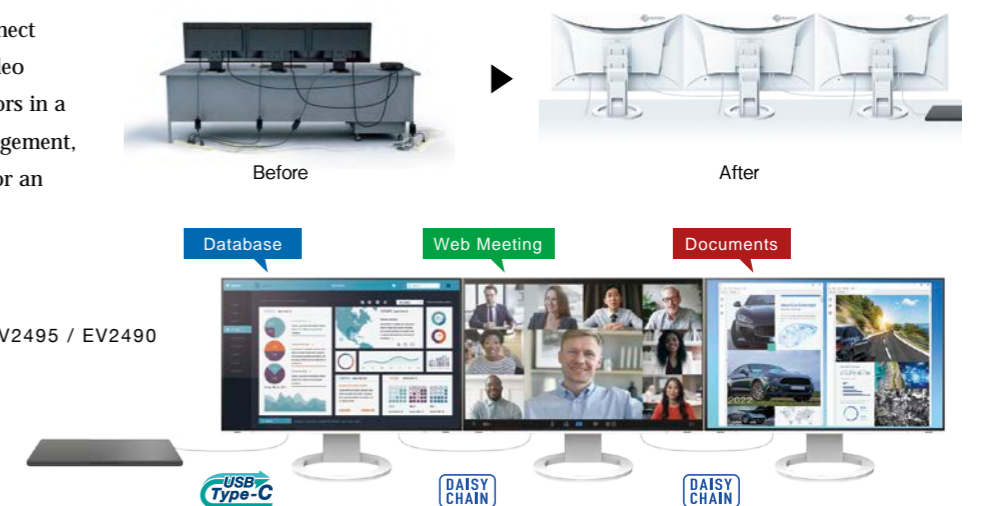
Compatible Models EV3895 / EV2795 / EV2495 / EV2490 / EV3285 / EV2785 / EV2781 / EV2485 / EV2480




[Visit Our Website](#) | Infographic: "What is USB Type-C?" 

Daisy Chain

With a daisy chain users can connect multiple monitors via a single video signal output. Connecting monitors in a daisy chain simplifies cable management, tidying up the back of the desk for an even cleaner office aesthetic.

Compatible Models EV2795 / EV2495 / EV2490




[Visit Our Website](#) | What do I need to know about daisy chaining? 

Bask in Beauty



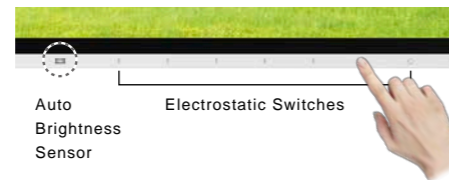
Frameless

Bezels that are Barely There

These monitors are virtually frameless. Even with the black borders along the perimeter of the LCD there is very little distance between the display area of each screen in a multi-monitor configuration which makes for almost seamless viewing.

Minimalist Front Surface Design

EIZO's no-compromises approach to design and functionality ensures the switches on the front of the monitor are easy to operate. Even with the frameless design, the minimalist front bezel is able to accommodate an auto brightness sensor along with power and setting control switches by utilizing smaller components.



Visualize your Workspace with AR

Scan the QR code using your smartphone or tablet to see how EIZO fits into your workspace with augmented reality.



Color Coordination

The monitor is available in white, for a brighter office environment, or black, for a sleek and stylish mood. The cables and stand also come in matching colors for a fully coordinated look.



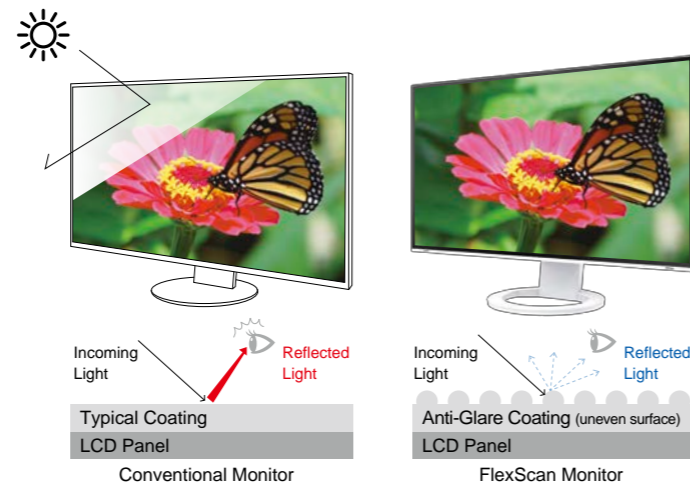


Say Goodbye to Tired Eyes

Glare Reduction

Anti-Glare Coating

FlexScan monitors are treated with an anti-glare coating to reduce screen reflections caused by ambient lighting. The coating scatters incoming light, reducing the amount of light reflected into your eyes.



Flicker-Free Viewing

EyeCare Dimming Mode

In low brightness ranges, users may perceive flicker on a typical LED backlight, causing eye fatigue and often headaches. EyeCare is a dimming function that cuts flicker to a degree that human eyes cannot detect, reducing eye fatigue and flicker-related headaches, without affecting color stability of the monitor.



FlexScan monitors are certified by TÜV Rheinland to have low blue light and be flicker-free.



Visit Our Website | "The Latest on Computer Screens and Eye Fatigue"

Auto Brightness Control

Always the Ideal Brightness

The Auto EcoView function automatically adjusts the brightness of your monitor according to ambient lighting. This ensures your monitor is always at the optimal brightness for reducing eye fatigue.



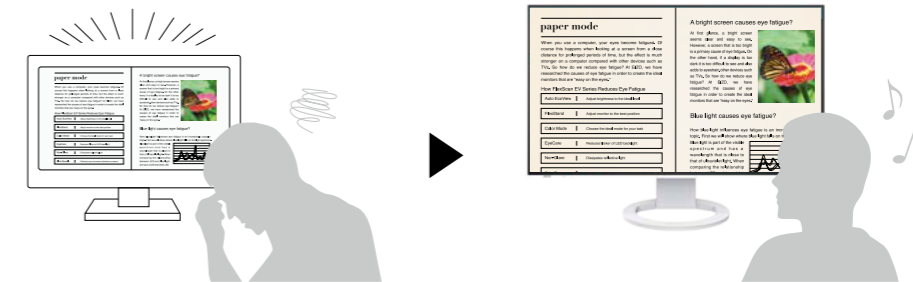
Blue Light Reduction

Paper Mode

Do you find that your screen is often too bright to read text comfortably? FlexScan monitors are equipped with Paper Mode which reduces blue light to simulate paper, making it less straining on your eyes. When used in conjunction with the Auto EcoView function, blue light is even further reduced.

Brightness
 Contrast Ratio
 Low Color Temperature

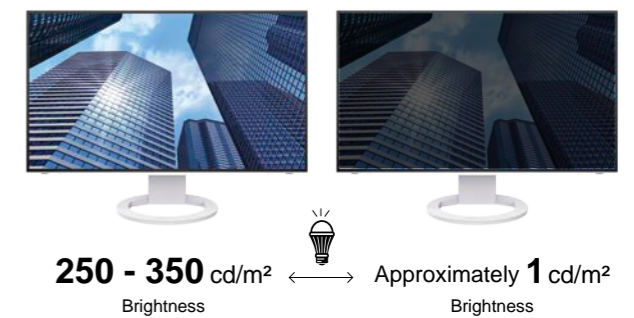
Blue Light 80% Reduction



Stable Image Even at Low Brightness

Reduce Brightness to Approximately 1 cd/m²

Frameless and wide monitors can be adjusted to a brightness of approximately 1 cd/m² without negatively impacting the color or stability of the screen.



250 - 350 cd/m² Brightness **Approximately 1 cd/m² Brightness**

Visit Our Website | "Designed to Protect Your Eyes"

The Perfect Position

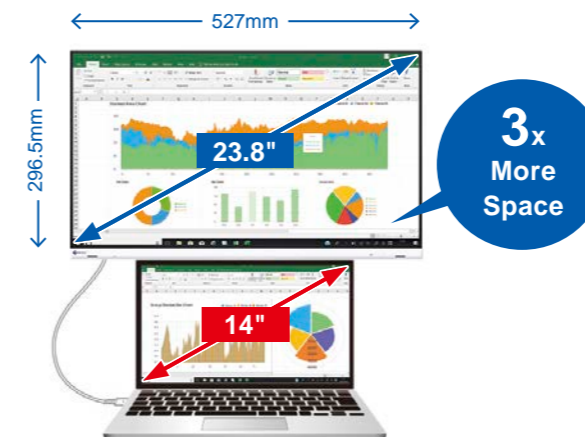


Space-Saving Positioning

For the most limited workspaces, a laptop can fit comfortably under the monitor with the stand at maximum height. This allows you to use the laptop as a second screen without taking up valuable desktop space.

The specific movement ranges of stands varies by model. See pages 18 - 21 for specifications of all monitors.

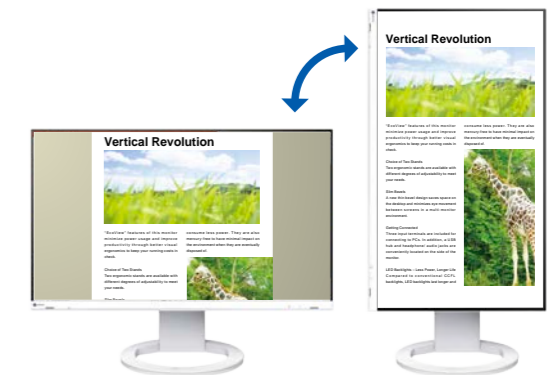
EV2480



Portrait Mode

View web pages and documents easily by switching the monitor to portrait mode simply by rotating the screen.

The specific movement range of stands varies by model. See pages 18 - 21 for specifications of all monitors.

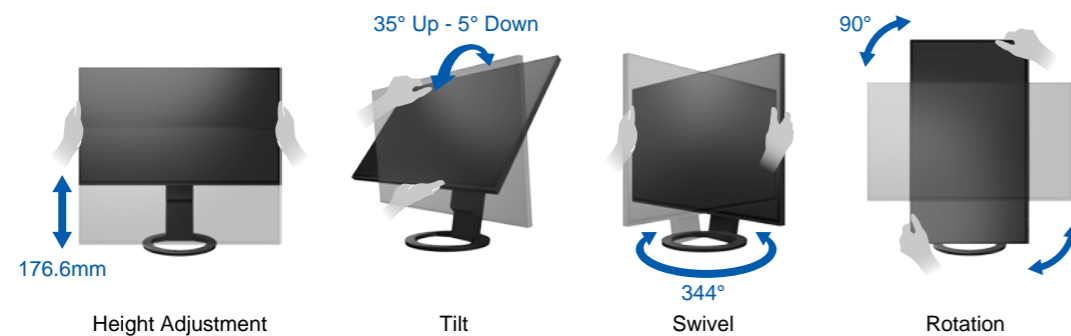


Versatile Stand

The stands feature height adjustment, tilt, and swivel, while saving space and remaining stylish. Quickly and smoothly adjust your monitor to the perfect position.

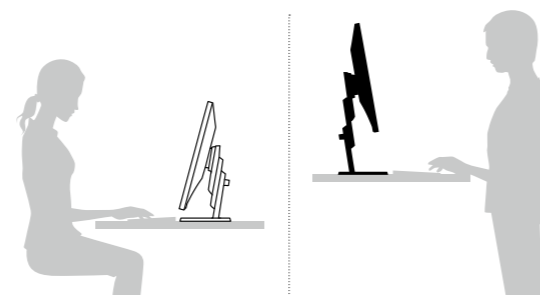
The specific movement ranges of stands varies by model. See pages 18 - 21 for specifications of all monitors.

EV2795 / EV2781



Wide Height Adjustment Range

The ergonomic stand allows you to adjust the monitor to the most comfortable position suited for the workplace or home office.



Free Up Your Workspace

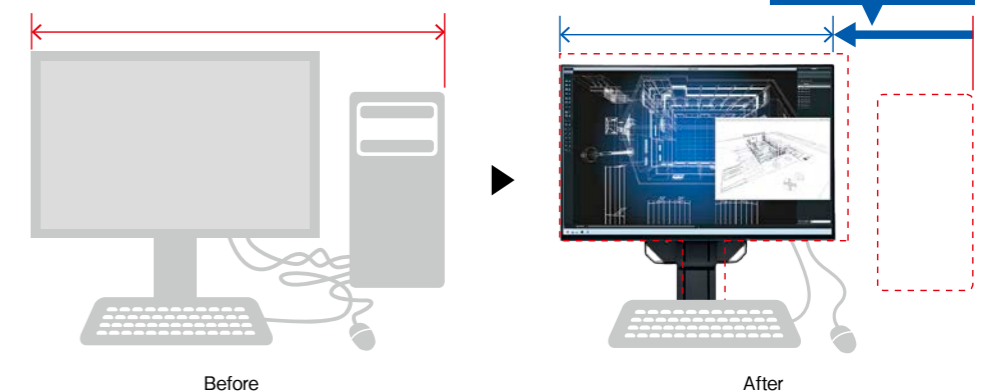
The PCSK-03 / PCSK-03R are VESA-compliant brackets for easily mounting a client terminal such as a thin client or mini PC to the back of the monitor's stand. The space the client terminal previously occupied is now freed up so you can make better use of your desktop.

Even with the client terminal attached you can adjust the monitor's stand freely.

Please check EIZO website for supported models.



PCSK-03
PCSK-03R
Stand Bracket

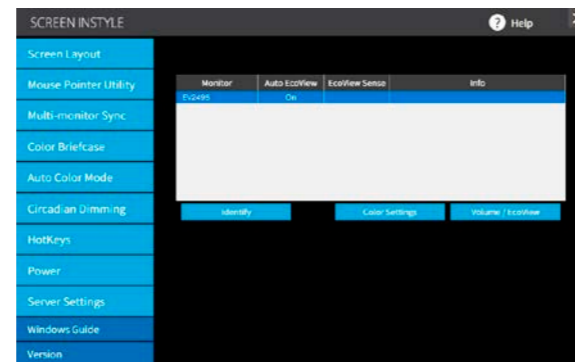


Intelligent Software to Work Better

SCREEN INSTYLE

EIZO's free Screen InStyle software automatically optimizes your monitor to make your user environment more comfortable. See pages 18 - 21 for compatible monitors.

Compatible OS Windows 11 / 10 / 8.1



Automatically Change the Color Mode for Each Application

Auto Color Mode

FlexScan monitors have multiple color modes designed for different uses. Use the Auto Color Mode to assign a color mode to turn on when using specific applications such as those for writing documents, photo viewing, creating illustrations or watching movies. When an application is opened the screen will automatically switch to the assigned color mode, making manual switching unnecessary.



Organize Your Desktop to Increase Work Efficiency

Screen Layout

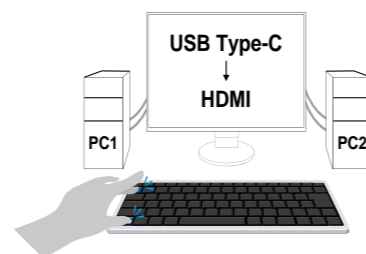
This function allows you to divide the desktop and arrange each program's window neatly across the screen to help you work smart and efficiently.



Easily Switch Between Inputs / Color Modes

Assign Hotkeys for Switching Input Signals and Color Modes

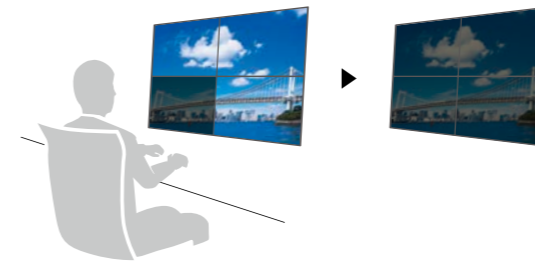
You can assign keyboard hotkeys to switch between color modes or input signals of two PCs connected to your monitor.



Multi-Monitor Convenience

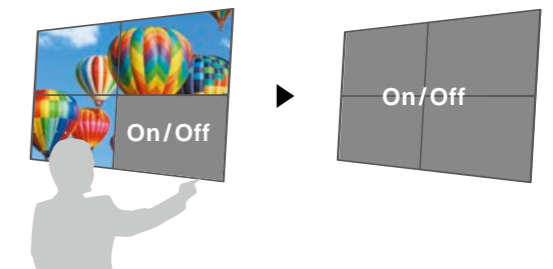
Synchronize Screen Adjustments

When using multiple monitors, save time by synchronizing all the monitors with each other. If you change the color mode, brightness or color temperature of one monitor, the rest will automatically change to the same.



On/Off All at Once

When one monitor's power is turned off, all other monitors will also turn off. Save energy by easily turning off all monitors at once.

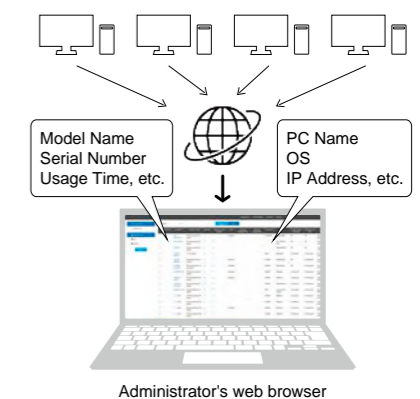


Screen InStyle Server

Effectively Monitor Asset Management

Automatically Receive Monitor or PC Information

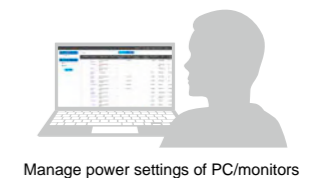
With Screen InStyle Server receive information such as the model name and serial number of any monitor connected to your network. Additionally, see information from the computer that each monitor is connected to, such as the OS, IP address and computer name.



Control Settings on Multiple Monitors at Once

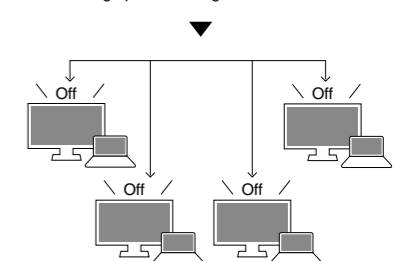
Manage Multiple Monitors from One Location

Control multiple monitors' settings such as color mode, brightness, and eco functions from a remote location. Furthermore, prevent unintended setting changes by locking the operation switch.



Conserve Power with Central Management

Manage various power settings of networked PCs and monitors. Set the monitor to turn off or the PC to sleep after a set period of inactivity.



Improve Security with Automatic Locking

Improve office security by setting networked PCs to automatically lock after a certain period of inactivity. This ensures the PC remains secure after the user leaves their desk.

Download Screen InStyle and Screen InStyle Server



Care for the Environment



Sustainable Monitor Design

Achieving a sustainable society where we do no harm to the environment nor waste precious resources is an important initiative for businesses and communities. FlexScan Sustainable Monitors are at the forefront of EIZO's efforts to contribute to this sustainable future.

Sustainable Monitor

EV3895 / EV2795 / EV2495 / EV2490 / EV3285 / EV2785 / EV2781 / EV2485 / EV2480 / EV2760 / EV2456 / EV2460 / EV2360



Conserve to Preserve

FlexScan Sustainable Monitors include models which are made of more than 60% recycled plastic. This cuts down on the amount of plastic waste going into the environment, conserves resources, and promotes reuse of materials for preserving our natural ecosystems.



Cushioning Environmental Impact

Starting with the most recent models, FlexScan Sustainable Monitors are moving away from using plastic and styrofoam in the packaging to reduce environmental impact. The monitors are safely packed using molded pulp, which is made from recycled cardboard and newspaper, and cables are wrapped in environmentally friendly pulp sheet instead of plastic bags.



Sustainable from Start to Finish

We conduct product Life Cycle Assessment (LCA) of FlexScan Sustainable Monitors on their environmental impact at each stage including the material procurement, manufacturing, transportation, use, and disposal. Based on the assessment, we formulate an Environmental Product Declaration (EPD) following the guidelines of Underwriters Laboratories Inc. (UL), an international certification institution, and obtain certification as a Type III declaration under ISO 14025.



Effortlessly Save on Power Consumption

FlexScan Sustainable Monitors' Auto EcoView function automatically adjusts the screen's brightness according to changes in the ambient lighting. The EcoView Optimizer 2 function fine-tunes the balance between brightness and gain according to the content displayed on the screen. These proprietary EcoView technologies cut power consumption by as much as 50%* compared to displaying at maximum brightness.

**Typical power consumption when not using USB power delivery*



Certified Sustainable

EIZO complies with international laws and regulations regarding environmental protection and effective use of energy. In addition, FlexScan Sustainable Monitors meet the latest environmental standards, such as ENERGY STAR®, EPEAT, and TCO Certified Generation 9.



Our Contribution to SDGs

As part of its corporate social responsibility (CSR) activities, EIZO is contributing towards the United Nations' Sustainable Development Goals (SDGs).

SUSTAINABLE DEVELOPMENT GOALS



Learn more about EIZO Sustainable Monitors





EV3895



EV2795



EV2495



EV2490



EV3285



EV2785



EV2781



EV2485



EV2480

Premium

Model Variations	With Stand	Black Gray	White	Without Stand	Black Gray	White
			EV3895-BK		EV2795-BK	
			EV3895-WT		EV2795-WT	
			EV3895-FBK		EV2795-FBK	
			EV3895-FWT		EV2795-FWT	
					EV2495-FBK	
					EV2495-FBK	
					EV2495-FBK	
					EV2490-WT	
					EV2490-FBK	
					EV2490-FBK	
					EV2490-FBK	
Panel	Type		IPS		IPS	
	Backlight		LED		LED	
	Size		37.5" (95.3 cm)		27.0" (68.5 cm)	
	Native Resolution		3840 x 1600 (24:10 aspect ratio)		2560 x 1440 (16:9 aspect ratio)	
	Viewable Image Size (H x V)		879.7 x 366.5 mm		596.7 x 335.7 mm	
	Pixel Pitch / Pixel Density		0.229 x 0.229 mm / 111 ppi		0.233 x 0.233 mm / 109 ppi	
	Display Colors		16.77 million		16.77 million	
	Viewing Angles (H / V, typ.)		178° / 178°		178° / 178°	
	Brightness (typ.)		300 cd/m ²		350 cd/m ²	
	Contrast Ratio (typ.)		1000:1		1000:1	
	Response Time (typ.)		5 ms (gray-to-gray)		5 ms (gray-to-gray)	
Video Signals	Input Terminals		USB Type-C (DisplayPort Alt Mode, HDCP 1.3), DisplayPort (HDCP 1.3), HDMI (HDCP 2.2 / 1.4) x 2		USB Type-C (DisplayPort Alt Mode, HDCP 1.3), DisplayPort (HDCP 1.3), HDMI (HDCP 1.4)	
	Output Terminals		-		USB Type-C (daisy chain)	
	Digital Scanning Frequency (H / V)		USB Type-C: 31 - 99 kHz / 29 - 31 Hz, 59 - 61 Hz DisplayPort: 31 - 99 kHz / 29 - 31 Hz, 59 - 61 Hz HDMI: 31 - 99 kHz / 29 - 31 Hz, 49 - 51 Hz, 59 - 61 Hz		USB Type-C: 31 - 89 kHz / 59 - 61 Hz DisplayPort: 31 - 89 kHz / 59 - 61 Hz HDMI: 31 - 89 kHz / 49 - 51 Hz, 59 - 61 Hz	
	Analog Scanning Frequency (H / V)		-		-	
	Sync Formats		-		-	
USB	Upstream		USB 3.1 Gen 1: Type-B x 2, USB 3.1 Gen 1: Type-C (DisplayPort Alt Mode, Power Delivery Source 85 W max.)		USB 3.1 Gen 1: Type-B, USB 3.1 Gen 1: Type-C (DisplayPort Alt Mode, Power Delivery Source 70 W max.)	
	Downstream		USB 3.1 Gen 1: Type-A x 4		USB 3.1 Gen 1: Type-A x 3, USB 3.1 Gen 1: Type-C (DisplayPort Alt Mode, Power Delivery Source 15 W max.)	
	USB LAN Adapter		RJ-45 (1000BASE-T) Windows 10 / 8.1 (64-bit, 32-bit), macOS Sierra (10.12) or later		RJ-45 (1000BASE-T) Windows 10 / 8.1 (64-bit, 32-bit), macOS Sierra (10.12) or later	
Audio	Speakers		1.0 W + 1.0 W		1.0 W + 1.0 W	
	Output Terminals		Headphones (Stereo mini jack)		Headphones (Stereo mini jack)	
Power	Power Requirements		AC 100 - 240 V, 50 / 60 Hz		AC 100 - 240 V, 50 / 60 Hz	
	Typical Power Consumption		28 W		16 W	
	Maximum Power Consumption		194 W		164 W	
	Power Save Mode		0.5 W or less		0.5 W or less	
Features & Functions	Pre-set Modes		User1, User2, sRGB, Paper, Movie, DICOM		User1, User2, sRGB, Paper, Movie, DICOM	
	Auto EcoView		Yes		Yes	
Physical Specifications	Dimensions (Landscape, W x H x D)		893.9 x 411 - 603.7 x 240 mm		611.4 x 368.6 - 545.2 x 230 mm	
	Dimensions (Without Stand, W x H x D)		893.9 x 398.2 x 109.8 mm		611.4 x 356.6 x 56 mm	
	Net Weight		13.2 kg		8.5 kg	
	Net Weight (Without Stand)		9.5 kg		5.7 kg	
	Height Adjustment Range		192.7 mm		176.6 mm	
	Tilt		35° Up, 5° Down		35° Up, 5° Down	
	Swivel		70°		344°	
	Pivot		-		90° (both clockwise and counter clockwise)	
	Hole Spacing (VESA Standard)		100 x 100 mm		100 x 100 mm	
Certifications & Standards			TCO Certified Generation 9, EPEAT 2018 (US), TÜV/Ergonomics, TÜV/Low blue light content, TÜV/Flicker Free, TÜV/GS, RCM, CE, UKCA, CB, cTUVus, FCC-B, CAN ICES-3 (B), TÜV/S, PSE, VCCI-B, EPA Energy Star, RoHS, WEEE, China RoHS, CCC, China Energy Label Grade1, EAC		TCO Certified Generation 9, EPEAT 2018 (US), TÜV/Ergonomics, TÜV/Low blue light content, TÜV/Flicker Free, TÜV/GS, RCM, CE, UKCA, CB, cTUVus, FCC-B, CAN ICES-3 (B), TÜV/S, PSE, VCCI-B, EPA Energy Star, RoHS, WEEE, China RoHS, CCC, China Energy Label Grade1, EAC	
Dedicated Software	Monitor Control Utility Screen InStyle		Supported		Supported	
Supplied Accessories	Signal Cables		USB Type-C (2 m), DisplayPort (2 m), HDMI (2 m)		USB Type-C (2 m)	
	Others		AC power cord (2 m), USB Type-A - USB Type-B cable (2 m) x 2, connector cover, VESA mounting screw x 4, setup guide		AC power cord (2 m), setup guide	
Warranty ¹			5 Years		5 Years	
Zero Bright Pixels ²			Yes		Yes	
Dimensions Drawing (Unit: mm)						

New Standard

Model Variations	With Stand	Black Gray	White	Without Stand	Black Gray	White
			EV3285-BK		EV2785-BK	
			EV3285-WT		EV2785-WT	
			EV3285-FBK		EV2785-FBK	
			EV3285-FWT		EV2785-FWT	
					EV2781-FBK	
					EV2781-FBK	
					EV2781-FBK	
					EV2485-WT	
					EV2485-FBK	
					EV2485-FBK	
					EV2485-FBK	
					EV2480-WT	
					EV2480-FBK	
					EV2480-FBK	
					EV2480-FBK	
Panel	Type		IPS		IPS	
	Backlight		LED		LED	
	Size		31.5" (80.0 cm)		27.0" (68.5 cm)	
	Native Resolution		3840 x 2160 (16:9 aspect ratio)		2560 x 1440 (16:9 aspect ratio)	
	Viewable Image Size (H x V)		697.3 x 392.2 mm		596.7 x 335.7 mm	
	Pixel Pitch / Pixel Density		0.182 x 0.182 mm / 140 ppi		0.155 x 0.155 mm / 163 ppi	
	Display Colors		16.77 million		16.77 million	
	Viewing Angles (H / V, typ.)		178° / 178°		178° / 178°	
	Brightness (typ.)		350 cd/m ²		350 cd/m ²	
	Contrast Ratio (typ.)		1300:1		1300:1	
	Response Time (typ.)		5 ms (gray-to-gray)		5 ms (gray-to-gray)	
Video Signals	Input Terminals		USB Type-C (DisplayPort Alt Mode, HDCP 1.3), DisplayPort (HDCP 1.3), HDMI (HDCP 2.2 / 1.4) x 2		USB Type-C (DisplayPort Alt Mode, HDCP 1.3), DisplayPort (HDCP 1.3), HDMI (HDCP 2.2 / 1.4) x 2	
	Output Terminals		-		-	
	Digital Scanning Frequency (H / V)		USB Type-C: 31 - 134 kHz / 29 - 31 Hz, 59 - 61 Hz DisplayPort: 31 - 134 kHz / 29 - 31 Hz, 59 - 61 Hz HDMI: 31 - 135 kHz / 29 - 31 Hz, 49 - 61 Hz		USB Type-C: 31 - 134 kHz / 29 - 31 Hz, 59 - 61 Hz DisplayPort: 31 - 134 kHz / 29 - 31 Hz, 59 - 61 Hz HDMI: 31 - 135 kHz / 29 - 31 Hz, 49 - 61 Hz	
	Analog Scanning Frequency (H / V)		-		-	
	Sync Formats		-		-	
USB	Upstream		USB 3.1 Gen 1: Type-C (DisplayPort Alt Mode, Power Delivery Source 60 W max.)		USB 3.1 Gen 1: Type-C (DisplayPort Alt Mode, Power Delivery Source 60 W max.)	
	Downstream		USB 3.1 Gen 1: Type-A x 2 (Battery Charging 10.5 W max. x 1)		USB 3.1 Gen 1: Type-A x 2 (Battery Charging 10.5 W max. x 1)	
	USB LAN Adapter		-		-	
Audio	Speakers		1.0 W + 1.0 W		1.0 W + 1.0 W	
	Output Terminals		Headphones (Stereo mini jack)		Headphones (Stereo mini jack)	
Power	Power Requirements		AC 100 - 240 V, 50 / 60 Hz		AC 100 - 240 V, 50 / 60 Hz	
	Typical Power Consumption		32 W		31 W	
	Maximum Power Consumption		163 W		163 W	
	Power Save Mode		0.5 W or less		0.5 W or less	
Features & Functions	Pre-set Modes		User1, User2, sRGB, Paper, Movie, DICOM		User1, User2, sRGB, Paper, Movie, DICOM	
	Auto EcoView		Yes		Yes	
Physical Specifications	Dimensions (Landscape, W x H x D)		717.4 x 427.3 - 576.2 x 230 mm		611.4 x 367.3 - 545.2 x 230 mm	
	Dimensions (Without Stand, W x H x D)		717.4 x 416.3 x 51.5 mm		611.4 x 356.3 x 50 mm	
	Net Weight		11.0 kg		8.2 kg	
	Net Weight (Without Stand)		7.6 kg		5.7 kg	
	Height Adjustment Range		148.9 mm		177.9 mm	
	Tilt		35° Up, 5° Down		35° Up, 5° Down	
	Swivel		344°		344°	
	Pivot		-		90° (clockwise)	
	Hole Spacing (VESA Standard)		100 x 100 mm		100 x 100 mm	
Certifications & Standards			TCO Certified Generation 8, EPEAT 2018 (US), TÜV/Ergonomics, TÜV/Low blue light content, TÜV/Flicker Free, TÜV/GS, RCM, CE, UKCA, CB, cTUVus, FCC-B, CAN ICES-3 (B), TÜV/S, PSE, VCCI-B, EPA Energy Star, RoHS, WEEE, China RoHS, CCC, China Energy Label Grade2, EAC		TCO Certified Generation 8, EPEAT 2018 (US), TÜV/Ergonomics, TÜV/Low blue light content, TÜV/Flicker Free, TÜV/GS, RCM, CE, UKCA, CB, cTUVus, FCC-B, CAN ICES-3 (B), TÜV/S, PSE, VCCI-B, EPA Energy Star, RoHS, WEEE, China RoHS, CCC, China Energy Label Grade2, EAC	
Dedicated Software	Monitor Control Utility Screen InStyle		Supported		Supported	
Supplied Accessories	Signal Cables		USB Type-C (2 m), DisplayPort (2 m), HDMI (2 m)		USB Type-C (2 m), DisplayPort (2 m), HDMI (2 m)	
	Others		AC power cord (2 m), cable cover (EV3285), VESA mounting screw x 4, setup guide		AC power cord (2 m), cable cover (EV2785), VESA mounting screw x 4, setup guide	
Warranty ¹			5 Years		5 Years	
Zero Bright Pixels ²			Yes		Yes	
Dimensions Drawing (Unit: mm)						

With current LCD technology, a panel may contain a limited number of missing or flickering pixels. If the monitor is left on continuously over a long period of time, dark smudges or burn-in may appear. To maximize the life of the monitor, we recommend the monitor be turned off periodically. ¹ Usage time is limited to 30,000 hours. ² 6 months from the date of purchase.

Extensive Market Reach



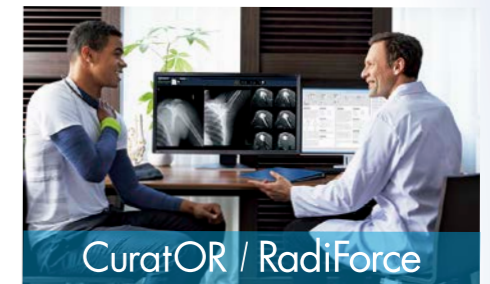
FlexScan

Business Enterprise



ColorEdge

Creative Work



CuratOR / RadiForce

Healthcare



DuraVision

Security & Surveillance / Maritime



Raptor / Re/Vue / SafeGuard

Air Traffic Control

50+ Years of Expertise

Visual Technology Company



Global Reach



Customization



Quality Control



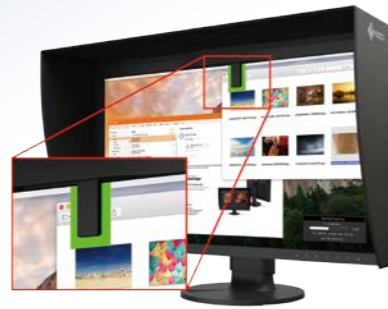
Manufacturing



Research and Development

Innovative Solutions

Built-In Calibration Sensors

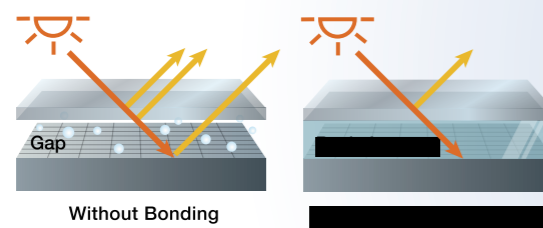


Automatically calibrates while you work

IP Decoding Solutions



In-House Optical Bonding



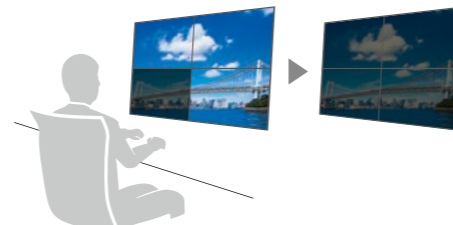
Market-Focused Cloud Solutions



Software for Improved Workflow



Use a single mouse across two PCs



Synchronized adjustment of multiple monitors



Simplified CMS with automatic software and printer settings adjustment

EIZO Corporation

153 Shimokashiwano, Hakusan, Ishikawa 924-8566 Japan
Phone +81-76-277-6794

<https://www.eizoglobal.com>

EIZO, the EIZO logo, FlexScan, ColorEdge, CuratOR, RadiForce, DuraVision, Raptor, and ScreenManager are registered trademarks of EIZO Corporation. EIZO ScreenSlicer, Re/Vue, SafeGuard and Screen InStyle are trademarks of EIZO Corporation. The terms HDMI and HDMI High-Definition Multimedia Interface, and the HDMI Logo are trademarks or registered trademarks of HDMI Licensing, LLC in the United States and other countries. VESA is a registered trademark of Video Electronics Standards Association. Windows, Microsoft are registered trademarks of Microsoft Corporation in the United States and other countries. DICOM is the registered trademark of the National Electrical Manufacturers Association for its standards publications relating to digital communications of medical information. USB Type-C is a registered trademark of USB Implementers Forum, Inc. macOS Sierra is a registered trademark of Apple Inc. ENERGY STAR is a registered trademark of the United States Environmental Protection Agency in the United States and other countries. All other company names, product names, and logos are trademarks or registered trademarks of their respective owners. Some screen images are used with permission from Microsoft. Specifications are subject to change without notice.

Copyright © 2022 EIZO Corporation. All rights reserved. (220602B)



WORK BETTER