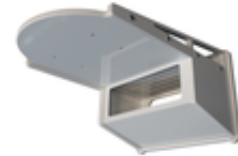


Wall Mounts for PTZ cameras

Wall mount brackets for Panasonic PTZ camera series

By KST Moschkau GmbH



KEY FEATURES

- Designed exclusively for Panasonic PTZ cameras
- Available in black and white
- Only requires supplied mounting plate to attach the PTZ camera
- Standing or hanging mounting of the camera possible

KST Moschkau GmbH has developed a mounting solution for Panasonic PTZ cameras.

Each wall mount bracket consists of:

- A wall mounting plate with 4 elongated holes for 8mm screws.
- A concealed cable guide opening.
- An extension arm with integrated storage compartment for power supply units or converters which is equipped with ventilation slots on the top.
- The camera mounting level on which the original mounting bracket of the camera is mounted.

The KST wall mount brackets are available in three different designs to match the extensive PTZ range:

For AW-UE150 series:

- KST-WM-UE150-B Wall Mount Bracket black
- KST-WM-UE150-W Wall Mount Bracket white

For AW-UE100 series:

- KST-WM-UE100-B Wall Mount Bracket black
- KST-WM-UE100-W Wall Mount Bracket white

For AW-HE130/-HN130 series:

- KST-WM-HEA10/130-B Wall Mount Bracket black
- KST-WM-HEA10/130-W Wall Mount Bracket white

For AW-UE70/-UN70, AW-HE42/-HN42, AW-HE40/-HN40, AW-HE38/-HN38 series:

- KST-WM-HE40/UE70-B Wall Mount Bracket black
- KST-WM-HE40/UE70-W Wall Mount Bracket white

SPECIFICATIONS

Weight	1,25kg
---------------	--------

URL: https://business.panasonic.no/professional-camera/Wall_Mount/KST-WM-HE40/UE70

CONTACT

Web: <https://business.panasonic.no/professional-camera/contact-us>