




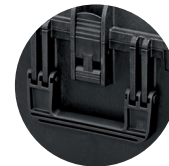
## MAX540H190TR

 604 x 473 x H225 mm  
23.78 x 18.62 x H8.86 inch.

 538 x 405 x H190 mm  
21.18 x 15.94 x H7.48 inch.

 50 + 140 mm  
1.97 + 5.51 inch.

 6,28 kg / 13.84 lb



**SIDE HANDLES**  
MANIGLIA LATERALE  
SU ENTRAMBI I LATI



**EXTENDABLE HANDLE**  
RETRO MANIGLIA  
TELESCOPICA A  
SCOMPARSA



- **WATERTIGHT SEAL AROUND LID / GUARNIZIONE ERMETICA**
- **AUTOMATIC PRESSURE RELEASE VALVE / VALVOLA AUTOMATICA DI PRESSURIZZAZIONE**
- **EASY TO OPEN DOUBLE THROW LATCHES / CHIUSURE DI SICUREZZA A DOPPIO STEP**
- **LOAD TESTED SOFT GRIP HANDLE / MANICO MORBIDO AD ALTA ERGONOMICITÀ**
- **STACKABLE INTERLOCKING SYSTEM / SISTEMA DI IMPILABILITÀ**
- **THICK BODY MATERIAL / PARETI SPESSE ANTIURTO**
- **EXTRA FIXING POINTS / PUNTI DI FISSAGGIO PER VARIE APPLICAZIONI**
- **FULLY LENGTH HINGES / CERNIERA LUNGO TUTTO IL PROFILO DELLA VALIGIA**
- **NYLON PINS, CORROSION FREE / PERNI IN NYLON ANTI CORROSIONE**
- **SCREEN PRINTING AND RESIN LABEL SPACE / SERIGRAFIA ED ETICHETTA RESINATA**
- **MATERIAL: POLYPROPYLENE COPOLYMER / MATERIALE: POLIPROPILENE COPOLIMERO**
- **LATCHES: NYLON / SERRATURE IN NYLON**
- **O-RING: POLYMER / GUARNIZIONE POLIMERO**
- **TROLLEY: METAL + PLASTIC / TROLLEY: METALLO + PLASTICA**
- **WHEELS WITH STAINLESS STEEL PIN / RUOTE CON ASSALE IN ACCIAIO INOX**

- **INTERNAL CUBIC VOLUME: 41399100 CUBIC MM - 1.462 CUBIC FEET / VOLUME: 41399100 MM CUBI**
- **VOLUME CAPACITY: 41,40 LT / CAPACITÀ: 41,40 LT**
- **PCS PER CARTON: 1 / PEZZI PER CARTONE: 1**
- **WEIGHT OF THE FULL CARTON: 7.35 KG - 16.20 LBS. / PESO DEL CARTONE: 7.35 KG**
- **MOULDING: INJECTION MOLDED / STAMPAGGIO: AD INIEZIONE**
- **RANGE TEMPERATURE: -30 / 90°C (-22 / 194°F) / RANGE DI TEMPERATURA: -30 / 90°C (-22 / 194°F)**
- **ACCESSORIES: CUBED & CONVOLUTED FOAMS - LID ORGANIZER - BACKPACK / SPUGNE CUBETTATE & SPUGNE BUGNATE - TASCA ORGANIZER - ZAINO**

**IP67 RATING**

**ATA 300**

**MIL SPECS**

**DEF STAN 81-41  
STANAG 4280**